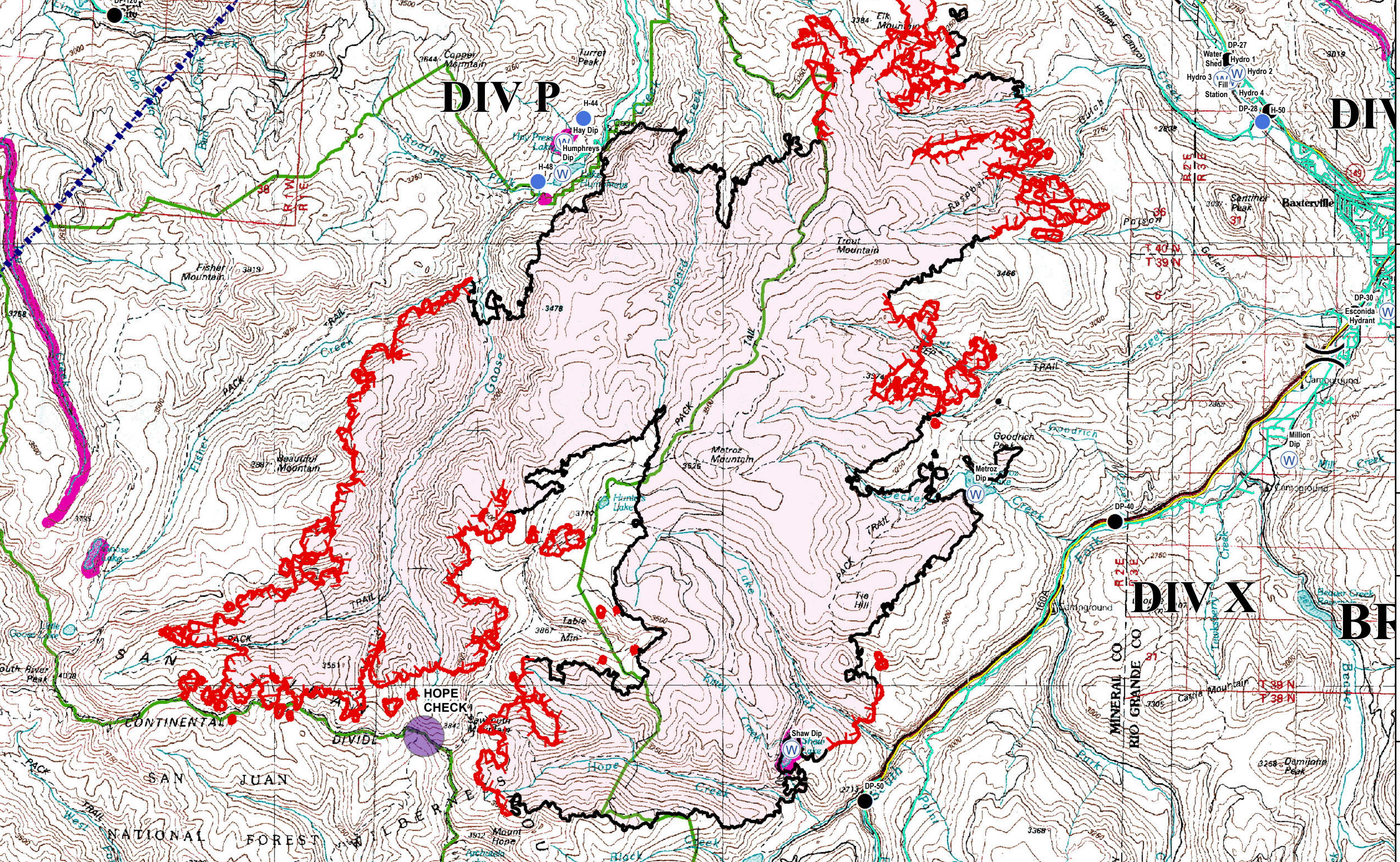


107°2'W 107°1'W 107°0'W 106°59'W 106°58'W 106°57'W 106°56'W 106°55'W 106°54'W 106°53'W 106°52'W 106°51'W 106°50'W 106°49'W 106°48'W 106°47'W 106°46'W 106°45'W 106°44'W 106°43'W 106°42'W 106°41'W 106°40'W 106°39'W

**West Fork Complex: West Fork Fire**  
**Pilot Map**  
**CO-SJF-000285**  
**July 10, 2013**  
 West Fork Perimeter as of 07-09-2013 1200 hrs  
 Estimated 39,217 ac

**BRANCH IV**

Label	Type	Long	Lat
Blue Creek Lodge Spike	Camp	106°47.811W	37°46.191N
Cooper Auxiliary	Camp	107°1.815W	37°45.888N
South Fork Spike	Camp	106°33.815W	37°40.551N
West Fork Spike	Camp	106°54.092W	37°26.663N
Creede Check	Check Point	106°55.530W	37°50.000N
Creede IP	Check Point	106°55.530W	37°50.000N
Dal Norte IP	Check Point	106°21.270W	37°42.820N
Fork Check	Check Point	106°52.534W	37°29.814N
Gamma IP	Check Point	106°52.460W	37°29.298N
Haron Check	Check Point	106°53.267W	37°27.026N
Hope Check	Check Point	106°53.270W	37°33.850N
Rio Dam Check	Check Point	106°15.392W	37°43.315N
Ruby Check	Check Point	106°08.510W	37°42.175N
Sk Check	Check Point	106°48.000W	37°29.000N
Wolf Check	Check Point	106°47.800W	37°46.500N
Williams Check	Check Point	106°13.107W	37°30.778N
Wolf Creek IP	Check Point	106°47.170W	37°28.850N
DP-1	Drop Point	106°48.907W	37°27.387N
DP-2	Drop Point	106°47.597W	37°28.365N
DP-3	Drop Point	106°50.067W	37°29.117N
DP-4	Drop Point	106°46.530W	37°25.167N
DP-20	Drop Point	106°49.715W	37°46.027N
DP-21	Drop Point	106°48.127W	37°46.025N
DP-22	Drop Point	106°44.232W	37°44.175N
DP-25	Drop Point	106°43.718W	37°44.011N
DP-26	Drop Point	106°43.042W	37°43.676N
DP-27	Drop Point	106°41.263W	37°44.191N
DP-28	Drop Point	106°40.133W	37°43.587N
DP-29	Drop Point	106°38.428W	37°40.872N
DP-30	Drop Point	106°39.277W	37°39.169N
DP-40	Drop Point	106°42.851W	37°36.597N
DP-50	Drop Point	106°46.865W	37°33.171N
DP-74	Drop Point	106°15.376W	37°43.511N
DP-76	Drop Point	106°17.071W	37°44.132N
DP-78	Drop Point	106°16.341W	37°43.347N
DP-80	Drop Point	106°13.038W	37°44.426N
DP-90	Drop Point	106°10.195W	37°47.358N
DP-92	Drop Point	106°8.911W	37°50.902N
DP-93	Drop Point	106°12.285W	37°53.315N
DP-94	Drop Point	106°10.591W	37°53.472N
DP-96	Drop Point	106°9.725W	37°55.863N
DP-100	Drop Point	106°3.789W	37°43.667N
DP-106	Drop Point	106°2.235W	37°41.232N
DP-108	Drop Point	106°1.584W	37°39.875N
DP-110	Drop Point	106°0.782W	37°38.341N
DP-120	Drop Point	106°58.199W	37°42.468N
DP-125	Drop Point	106°0.348W	37°44.676N
DP-130	Drop Point	106°58.659W	37°47.812N
DP-140	Drop Point	106°54.291W	37°45.867N
DP-180	Drop Point	106°50.495W	37°46.658N
Helibase	Helibase	106°0.845W	37°16.028N
Creede Helibase	Helibase	106°55.084W	37°49.454N
Willow Helibase	Helibase	106°36.617W	37°40.056N
H-1	Helispot	106°48.907W	37°27.387N
H-2	Helispot	106°49.379W	37°26.861N
H-3	Helispot	106°50.141W	37°26.019N
H-4	Helispot	106°46.869W	37°25.193N
H-5	Helispot	106°55.719W	37°28.207N
H-41	Helispot	106°9.916W	37°50.578N
H-42	Helispot	106°7.709W	37°43.667N
H-43	Helispot	106°6.584W	37°45.969N
H-44	Helispot	106°51.033W	37°43.326N
H-45	Helispot	106°50.287W	37°46.684N
H-46	Helispot	106°50.505W	37°46.722N
H-47	Helispot	106°49.87W	37°45.878N
H-48	Helispot	106°51.688W	37°40.565N
H-49	Helispot	106°38.34W	37°40.742N
H-50	Helispot	106°40.724W	37°41.459N
H-51	Helispot	106°37.345W	37°40.849N
H-52	Helispot	106°10.605W	37°46.686N
H-53	Helispot	106°11.565W	37°45.135N
H-54	Helispot	106°14.161W	37°43.748N
H-55	Helispot	106°14.29W	37°43.876N
H-56	Helispot	106°15.705W	37°45.351N
H-57	Helispot	106°47.071W	37°43.151N
H-58	Helispot	106°13.584W	37°46.372N
H-59	Helispot	106°46.617W	37°43.056N
H-60	Helispot	106°47.717W	37°44.483N
H-62	Helispot	106°59.663W	37°43.138N
H-64	Helispot	106°07.114W	37°38.378N
ICP Del Norte	Incident Command Post	106°20.85W	37°40.442N
ICP Pagosa	Incident Command Post	106°07.89W	37°15.977N
Med/Vac Site	Med/Vac Site	106°47.865W	37°43.971N
Med/Vac Site	Med/Vac Site	106°48.907W	37°27.387N
Med/Vac Site	Med/Vac Site	106°49.379W	37°26.861N
SJF2 Pagosa Portable	Mobile Weather Unit	106°48.023W	37°29.457N
Blue Park RAWS	Mobile Weather Unit	106°46.717W	37°47.583N
IRAWS 13	Mobile Weather Unit	106°3.37W	37°47.673N
IRAWS 14	Mobile Weather Unit	106°3.349W	37°47.673N
IRAWS 15	Mobile Weather Unit	106°33.345W	37°48.452N
IRAWS 16	Mobile Weather Unit	106°39.738W	37°50.518N
IRAWS 17	Mobile Weather Unit	106°35.048W	37°41.782N
Agua CMD	Repeater	106°35.322W	37°43.67N
CMD-1	Repeater	106°3.341W	37°47.649N
CMD-2	Repeater	106°35.333W	37°43.767N
CMD-3	Repeater	106°34.302W	37°43.203N
CMD-4	Repeater	106°51.319W	37°47.673N
Saddle Mt CMD	Repeater	106°56.741W	37°26.373N
Wolf Creek CMD	Repeater	106°47.923W	37°27.425N
Clear Retardant Dip	Retardant/Mud Pit	106°9.234W	37°51.339N
Elk Retardant Dip	Retardant/Mud Pit	106°40.577W	37°41.362N
Safety Zone	Safety Zone	106°47.845W	37°45.943N
Safety Zone	Safety Zone	106°48.242W	37°45.867N
Safety Zone	Safety Zone	106°46.549W	37°45.365N
Borns Dip	Water Source	106°55.462W	37°27.836N
Canyon Dip	Water Source	106°10.676W	37°46.438N
Divide Dip	Water Source	106°20.37W	37°35.95N
Escondida Hydrant	Water Source	106°38.772W	37°39.193N
Fill Station	Water Source	106°41.123W	37°42.036N
Hay Dip	Water Source	106°16.584W	37°43.203N
High Dip	Water Source	106°51.319W	37°41.049N
Humphreys Dip	Water Source	106°51.331W	37°40.672N
Hydro 1	Water Source	106°41.222W	37°42.008N
Hydro 2	Water Source	106°41.158W	37°42.018N
Hydro 3	Water Source	106°41.368W	37°41.959N
Hydro 4	Water Source	106°41.23W	37°41.942N
Lion's Dip	Water Source	106°04.089W	37°43.587N
Ladders Dip	Water Source	106°48.889W	37°24.618N
Lazy Dip	Water Source	106°14.016W	37°47.051N
Maria Dip	Water Source	106°5.14W	37°47.623N
Metroz Dip	Water Source	106°44.974W	37°36.901N
Million Dip	Water Source	106°40.223W	37°37.378N
Paro Dip	Water Source	106°46.042W	37°28.049N
Powerline Dip	Water Source	106°5.566W	37°44.329N
Ranch Dip	Water Source	106°12.123W	37°47.717N
Red Dip	Water Source	106°00.852W	37°38.235N
Shaw Dip	Water Source	106°47.69W	37°33.781N
Water Shed	Water Source	106°41.352W	37°41.958N



**Zone Fence**  
 3,0953 - TFR as of 7/8/13

**Wilderness Boundary**

**Check Point**  
 ● ROTOR WING  
 ○ FIXED WING

**FireLine**  
 — Uncontrolled Fire Edge  
 — Completed Line  
 — Div J/K line  
 — Powerlines - Distribution  
 — Powerlines - Transmission  
 — Interstate  
 — Paved Surface

**Retardant Avoid Areas**

**Helispot**  
 ● Helispot  
 ○ Camp  
 ● Drop Point  
 ⊗ Fire Origin  
 ○ Helibase

**Incident Command Post**  
 ⊕ Medevac Site  
 WX Mobile Weather Unit  
 ○ Repeater  
 ○ Water Source

0 0.25 0.5 1 1.5 2 Miles

KDH Date: 7/9/2013 Time: 7:47:58 PM  
 Coordinate System: NAD 1983 UTM Zone 13N  
 Projection: Transverse Mercator  
 Datum: North American 1983  
 False Easting: 500,000.0000  
 False Northing: 0.0000  
 Central Meridian: -105.0000  
 Scale Factor: 0.9996  
 Latitude Of Origin: 0.0000  
 Units: Meter

107°2'W 107°1'W 107°0'W 106°59'W 106°58'W 106°57'W 106°56'W 106°55'W 106°54'W 106°53'W 106°52'W 106°51'W 106°50'W 106°49'W 106°48'W 106°47'W 106°46'W 106°45'W 106°44'W 106°43'W 106°42'W 106°41'W 106°40'W 106°39'W