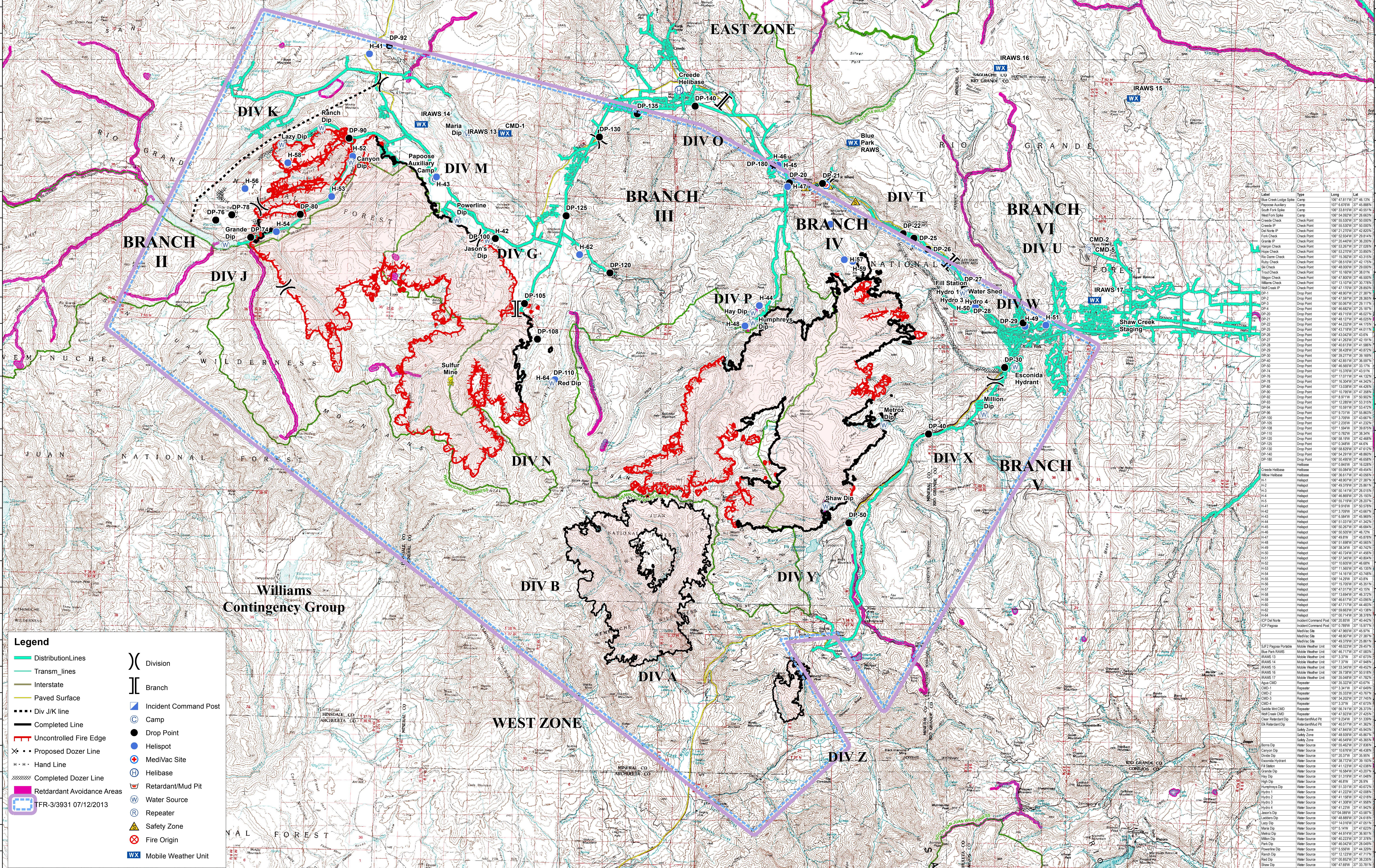


West Fork Complex: East Zone
 Air Ops
 CO-SJF-000285
 July 13, 2013
 Perimeter Estimate as of
 07-11-2013 1600 hrs 109,615 ac



0 0.5 1 2 3 4 Miles
 KCH Date: 7/10/2013 Time: 4:31:52 PM
 Coordinate System: NAD 1983 UTM Zone 13N
 Datum: North American 1983
 Projection: Transverse Mercator
 Central Meridian: -105.0000
 False Easting: 500,000.0000
 False Northing: 0.0000
 Scale Factor: 0.9996
 Latitude Of Origin: 0.0000
 Units: Meter



Legend

- Distribution Lines
- Transm. lines
- Interstate
- Paved Surface
- Uncontrolled Fire Edge
- Completed Dozer Line
- Proposed Dozer Line
- Retardant Avoidance Areas
- TFR-3/931 07/12/2013
- Division
- Branch
- Incident Command Post
- Camp
- Drop Point
- Helispot
- Medi/Vac Site
- Helibase
- Retardant/Mud Pit
- Water Source
- Repeater
- Safety Zone
- Fire Origin
- Mobile Weather Unit

Label	Type	Long	Lat
Blue Creek Lodge Spile	Camp	106° 47' 81.11W	37° 46' 13.1N
Papoose Auxiliary	Camp	106° 47' 58.99W	37° 46' 58.88N
West Fork Spile	Camp	106° 53' 59.99W	37° 50' 55.91N
West Fork Spile	Camp	106° 54' 02.00W	37° 50' 55.91N
Creede Check	Check Point	106° 55' 53.00W	37° 50' 00.00N
Creede IP	Check Point	106° 55' 53.00W	37° 50' 00.00N
Die North IP	Check Point	106° 21' 27.00W	37° 42' 82.00N
Fork Check	Check Point	106° 53' 29.00W	37° 50' 38.00N
Grande IP	Check Point	106° 20' 44.00W	37° 50' 36.00N
Harpis Check	Check Point	106° 43' 26.00W	37° 42' 77.00N
Ruby Check	Check Point	106° 08' 05.00W	37° 42' 17.00N
Trout Check	Check Point	106° 48' 00.00W	37° 50' 38.00N
Trout Check	Check Point	106° 47' 10.00W	37° 43' 51.00N
Wagon Check	Check Point	106° 47' 80.00W	37° 46' 55.00N
Volans Check	Check Point	106° 48' 00.00W	37° 50' 38.00N
Wolf Creek IP	Check Point	106° 47' 10.00W	37° 43' 51.00N
DP-1	Drop Point	106° 48' 50.00W	37° 27' 38.00N
DP-2	Drop Point	106° 42' 20.00W	37° 41' 17.00N
DP-3	Drop Point	106° 50' 06.00W	37° 28' 17.00N
DP-4	Drop Point	106° 48' 50.00W	37° 28' 17.00N
DP-5	Drop Point	106° 48' 50.00W	37° 28' 17.00N
DP-6	Drop Point	106° 48' 50.00W	37° 28' 17.00N
DP-7	Drop Point	106° 48' 50.00W	37° 28' 17.00N
DP-8	Drop Point	106° 48' 50.00W	37° 28' 17.00N
DP-9	Drop Point	106° 48' 50.00W	37° 28' 17.00N
DP-10	Drop Point	106° 48' 50.00W	37° 28' 17.00N
DP-11	Drop Point	106° 48' 50.00W	37° 28' 17.00N
DP-12	Drop Point	106° 48' 50.00W	37° 28' 17.00N
DP-13	Drop Point	106° 48' 50.00W	37° 28' 17.00N
DP-14	Drop Point	106° 48' 50.00W	37° 28' 17.00N
DP-15	Drop Point	106° 48' 50.00W	37° 28' 17.00N
DP-16	Drop Point	106° 48' 50.00W	37° 28' 17.00N
DP-17	Drop Point	106° 48' 50.00W	37° 28' 17.00N
DP-18	Drop Point	106° 48' 50.00W	37° 28' 17.00N
DP-19	Drop Point	106° 48' 50.00W	37° 28' 17.00N
DP-20	Drop Point	106° 48' 50.00W	37° 28' 17.00N
DP-21	Drop Point	106° 48' 50.00W	37° 28' 17.00N
DP-22	Drop Point	106° 48' 50.00W	37° 28' 17.00N
DP-23	Drop Point	106° 48' 50.00W	37° 28' 17.00N
DP-24	Drop Point	106° 48' 50.00W	37° 28' 17.00N
DP-25	Drop Point	106° 48' 50.00W	37° 28' 17.00N
DP-26	Drop Point	106° 48' 50.00W	37° 28' 17.00N
DP-27	Drop Point	106° 48' 50.00W	37° 28' 17.00N
DP-28	Drop Point	106° 48' 50.00W	37° 28' 17.00N
DP-29	Drop Point	106° 48' 50.00W	37° 28' 17.00N
DP-30	Drop Point	106° 48' 50.00W	37° 28' 17.00N
DP-31	Drop Point	106° 48' 50.00W	37° 28' 17.00N
DP-32	Drop Point	106° 48' 50.00W	37° 28' 17.00N
DP-33	Drop Point	106° 48' 50.00W	37° 28' 17.00N
DP-34	Drop Point	106° 48' 50.00W	37° 28' 17.00N
DP-35	Drop Point	106° 48' 50.00W	37° 28' 17.00N
DP-36	Drop Point	106° 48' 50.00W	37° 28' 17.00N
DP-37	Drop Point	106° 48' 50.00W	37° 28' 17.00N
DP-38	Drop Point	106° 48' 50.00W	37° 28' 17.00N
DP-39	Drop Point	106° 48' 50.00W	37° 28' 17.00N
DP-40	Drop Point	106° 48' 50.00W	37° 28' 17.00N
DP-41	Drop Point	106° 48' 50.00W	37° 28' 17.00N
DP-42	Drop Point	106° 48' 50.00W	37° 28' 17.00N
DP-43	Drop Point	106° 48' 50.00W	37° 28' 17.00N
DP-44	Drop Point	106° 48' 50.00W	37° 28' 17.00N
DP-45	Drop Point	106° 48' 50.00W	37° 28' 17.00N
DP-46	Drop Point	106° 48' 50.00W	37° 28' 17.00N
DP-47	Drop Point	106° 48' 50.00W	37° 28' 17.00N
DP-48	Drop Point	106° 48' 50.00W	37° 28' 17.00N
DP-49	Drop Point	106° 48' 50.00W	37° 28' 17.00N
DP-50	Drop Point	106° 48' 50.00W	37° 28' 17.00N
DP-51	Drop Point	106° 48' 50.00W	37° 28' 17.00N
DP-52	Drop Point	106° 48' 50.00W	37° 28' 17.00N
DP-53	Drop Point	106° 48' 50.00W	37° 28' 17.00N
DP-54	Drop Point	106° 48' 50.00W	37° 28' 17.00N
DP-55	Drop Point	106° 48' 50.00W	37° 28' 17.00N
DP-56	Drop Point	106° 48' 50.00W	37° 28' 17.00N
DP-57	Drop Point	106° 48' 50.00W	37° 28' 17.00N
DP-58	Drop Point	106° 48' 50.00W	37° 28' 17.00N
DP-59	Drop Point	106° 48' 50.00W	37° 28' 17.00N
DP-60	Drop Point	106° 48' 50.00W	37° 28' 17.00N
DP-61	Drop Point	106° 48' 50.00W	37° 28' 17.00N
DP-62	Drop Point	106° 48' 50.00W	37° 28' 17.00N
DP-63	Drop Point	106° 48' 50.00W	37° 28' 17.00N
DP-64	Drop Point	106° 48' 50.00W	37° 28' 17.00N
DP-65	Drop Point	106° 48' 50.00W	37° 28' 17.00N
DP-66	Drop Point	106° 48' 50.00W	37° 28' 17.00N
DP-67	Drop Point	106° 48' 50.00W	37° 28' 17.00N
DP-68	Drop Point	106° 48' 50.00W	37° 28' 17.00N
DP-69	Drop Point	106° 48' 50.00W	37° 28' 17.00N
DP-70	Drop Point	106° 48' 50.00W	37° 28' 17.00N
DP-71	Drop Point	106° 48' 50.00W	37° 28' 17.00N
DP-72	Drop Point	106° 48' 50.00W	37° 28' 17.00N
DP-73	Drop Point	106° 48' 50.00W	37° 28' 17.00N
DP-74	Drop Point	106° 48' 50.00W	37° 28' 17.00N
DP-75	Drop Point	106° 48' 50.00W	37° 28' 17.00N
DP-76	Drop Point	106° 48' 50.00W	37° 28' 17.00N
DP-77	Drop Point	106° 48' 50.00W	37° 28' 17.00N
DP-78	Drop Point	106° 48' 50.00W	37° 28' 17.00N
DP-79	Drop Point	106° 48' 50.00W	37° 28' 17.00N
DP-80	Drop Point	106° 48' 50.00W	37° 28' 17.00N
DP-81	Drop Point	106° 48' 50.00W	37° 28' 17.00N
DP-82	Drop Point	106° 48' 50.00W	37° 28' 17.00N
DP-83	Drop Point	106° 48' 50.00W	37° 28' 17.00N
DP-84	Drop Point	106° 48' 50.00W	37° 28' 17.00N
DP-85	Drop Point	106° 48' 50.00W	37° 28' 17.00N
DP-86	Drop Point	106° 48' 50.00W	37° 28' 17.00N
DP-87	Drop Point	106° 48' 50.00W	37° 28' 17.00N
DP-88	Drop Point	106° 48' 50.00W	37° 28' 17.00N
DP-89	Drop Point	106° 48' 50.00W	37° 28' 17.00N
DP-90	Drop Point	106° 48' 50.00W	37° 28' 17.00N
DP-91	Drop Point	106° 48' 50.00W	37° 28' 17.00N
DP-92	Drop Point	106° 48' 50.00W	37° 28' 17.00N
DP-93	Drop Point	106° 48' 50.00W	37° 28' 17.00N
DP-94	Drop Point	106° 48' 50.00W	37° 28' 17.00N
DP-95	Drop Point	106° 48' 50.00W	37° 28' 17.00N
DP-96	Drop Point	106° 48' 50.00W	37° 28' 17.00N
DP-97	Drop Point	106° 48' 50.00W	37° 28' 17.00N
DP-98	Drop Point	106° 48' 50.00W	37° 28' 17.00N
DP-99	Drop Point	106° 48' 50.00W	37° 28' 17.00N
DP-100	Drop Point	106° 48' 50.00W	37° 28' 17.00N
DP-101	Drop Point	106° 48' 50.00W	37° 28' 17.00N
DP-102	Drop Point	106° 48' 50.00W	37° 28' 17.00N
DP-103	Drop Point	106° 48' 50.00W	37° 28' 17.00N
DP-104	Drop Point	106° 48' 50.00W	37° 28' 17.00N
DP-105	Drop Point	106° 48' 50.00W	37° 28' 17.00N
DP-106	Drop Point	106° 48' 50.00W	37° 28' 17.00N
DP-107	Drop Point	106° 48' 50.00W	37° 28' 17.00N
DP-108	Drop Point	106° 48' 50.00W	37° 28' 17.00N
DP-109	Drop Point	106° 48' 50.00W	37° 28' 17.00N
DP-110	Drop Point	106° 48' 50.00W	37° 28' 17.00N
DP-111	Drop Point	106° 48' 50.00W	37° 28' 17.00N
DP-112	Drop Point	106° 48' 50.00W	37° 28' 17.00N
DP-113	Drop Point	106° 48' 50.00W	37° 28' 17.00N
DP-114	Drop Point	106° 48' 50.00W	37° 28' 17.00N
DP-115	Drop Point	106° 48' 50.00W	37° 28' 17.00N
DP-116	Drop Point	106° 48' 50.00W	37° 28' 17.00N
DP-117	Drop Point	106° 48' 50.00W	37° 28' 17.00N
DP-118	Drop Point	106° 48' 50.00W	37° 28' 17.00N
DP-119	Drop Point	106° 48' 50.00W	37° 28' 17.00N
DP-120	Drop Point	106° 48' 50.00W	37° 28' 17.00N
DP-121	Drop Point	106° 48' 50.00W	37° 28' 17.00N
DP-122	Drop Point	106° 48' 50.00W	37° 28' 17.00N
DP-123	Drop Point	106° 48' 50.00W	37° 28' 17.00N
DP-124	Drop Point	106° 48' 50.00W	37° 28' 17.00N
DP-125	Drop Point	106° 48' 50.00W	37° 28' 17.00N
DP-126	Drop Point	106° 48' 50.00W	37° 28' 17.00N
DP-127	Drop Point	106° 48' 50.00W	37° 28' 17.00N
DP-128	Drop Point	106° 48' 50.00W	37° 28' 17.00N
DP-129	Drop Point	106° 48' 50.00W	37° 28' 17.00N
DP-130	Drop Point	106° 48' 50.00W	37° 28' 17.00N
DP-131	Drop Point	106° 48' 50.00W	37° 28' 17.00N
DP-132	Drop Point	106° 48' 50.00W	37° 28' 17.00N
DP-133	Drop Point	106° 48' 50.00W	37° 28' 17.00N
DP-134	Drop Point	106° 48' 50.00W	37° 28' 17.00N
DP-135	Drop Point	106° 48' 50.00W	37° 28' 17.00N
DP-136	Drop Point	106° 48' 50.00W	37° 28' 17.00N
DP-137	Drop Point	106° 48' 50.00W	37° 28' 17.00N
DP-138	Drop Point	106° 48' 50.00W	37° 28' 17.00N
DP-139	Drop Point	106° 48' 50.00W	37° 28' 17.00N
DP-140	Drop Point	106° 48' 50.00W	37° 28' 17.00N
DP-141	Drop Point	106° 48' 50.00W	37° 28' 17.00N
DP-142	Drop Point	106° 48' 50.00W	37° 28' 17.00N
DP-143	Drop Point	106° 48' 50.00W	37° 28' 17.00N
DP-144	Drop Point	106° 48' 50.00W	37° 28' 17.00N
DP-145	Drop Point	106° 48' 50.00W	37° 28' 17.00N
DP-146	Drop Point	106° 48' 50.00W	37° 28' 17.00N
DP-147	Drop Point	106° 48' 50.00W	37° 28' 17.00N
DP-148	Drop Point	106° 48' 50.00W	37° 28' 17.00N
DP-149	Drop Point	106° 48' 50.00W	37° 28' 17.00N
DP-150	Drop Point	106° 48' 50.00W	37° 28' 17.00N
DP-151	Drop Point	106° 48' 50.00W	37° 28' 17.00N
DP-152	Drop Point	106° 48' 50.00W	37° 28' 17.00N
DP-153	Drop Point	106° 48' 50.00W	37° 28' 17.00N
DP-154	Drop Point	106° 48' 50.00W	37° 28' 17.00N
DP-155	Drop Point	106° 48' 50.00W	37° 28' 17.00N
DP-156	Drop Point	106° 48' 50.00W	37° 28' 17.00N
DP-157	Drop Point	106° 48' 50.00W	37° 28' 17.00N
DP-158	Drop Point	106° 48' 50.00W	37° 28' 17.00N
DP-159	Drop Point	106° 48' 50.00W	37° 28' 17.00N
DP-160	Drop Point	106° 48' 50.00W	37° 28' 17.00N
DP-161	Drop Point	106° 48' 50.00W	37° 28' 17.00N
DP-162	Drop Point	106° 48' 50.00W	37° 28' 17.00N
DP-163	Drop Point	106° 48' 50.00W	37° 28' 17.00N
DP-164	Drop Point	106° 48' 50.00W	37° 28' 17.00N
DP-165	Drop Point	106° 48' 50.00W	37° 28' 17.00N
DP-166	Drop Point	106° 48' 50.00W	37° 28' 17.00N
DP-167	Drop Point	106° 48' 50.00W	37° 28' 17.00N
DP-168	Drop Point	106° 48' 50.00W	37° 28' 17.00N
DP-169	Drop Point	106° 48' 50.00W	37° 28' 17.00N
DP-170	Drop Point	106° 48' 50.00W	37° 28' 17.00N
DP-171	Drop Point	106° 48' 50.00W	37° 28' 17.00N
DP-172	Drop Point	106° 48' 50.00W	37° 28' 17.00N
DP-173	Drop Point	106° 48'	