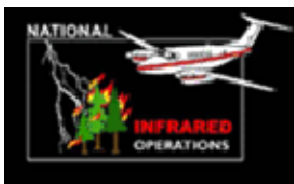


107°21'0"W 107°20'0"W 107°19'0"W 107°18'0"W 107°17'0"W 107°16'0"W 107°15'0"W 107°14'0"W 107°13'0"W 107°12'0"W 107°11'0"W 107°10'0"W

Abnormal Heat Detect Point #1
Infrared Imagery Map
Imagery Flown June 29, 2013 - 2231 MDT hours
IRIN: Bob Brantlinger

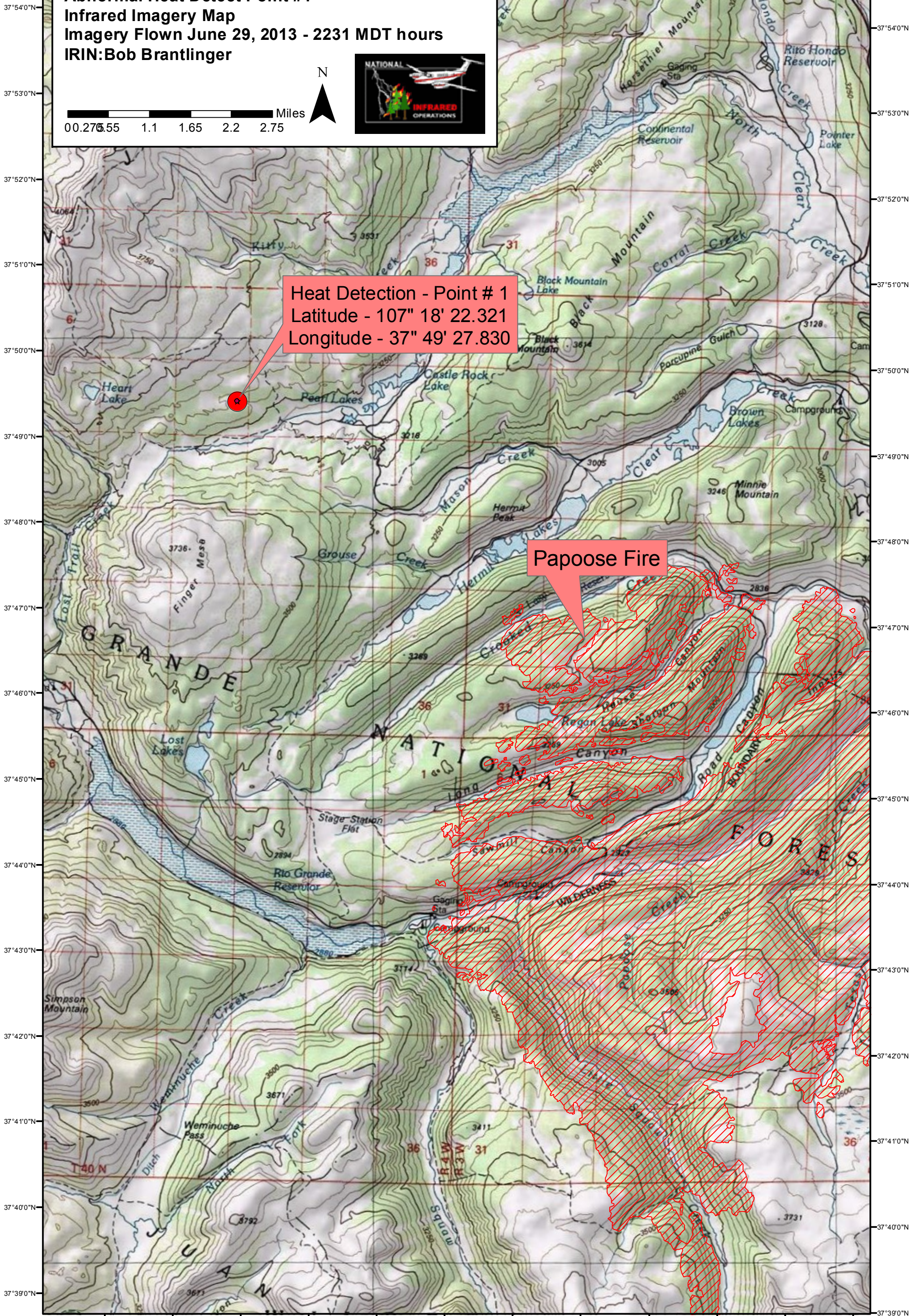
N

0 0.275 0.55 1.1 1.65 2.2 2.75 Miles



Heat Detection - Point # 1
Latitude - 107° 18' 22.321
Longitude - 37° 49' 27.830

Papoose Fire



107°20'0"W 107°19'0"W 107°18'0"W 107°17'0"W 107°16'0"W 107°15'0"W 107°14'0"W 107°13'0"W 107°12'0"W 107°11'0"W 107°10'0"W 107°9'0"W