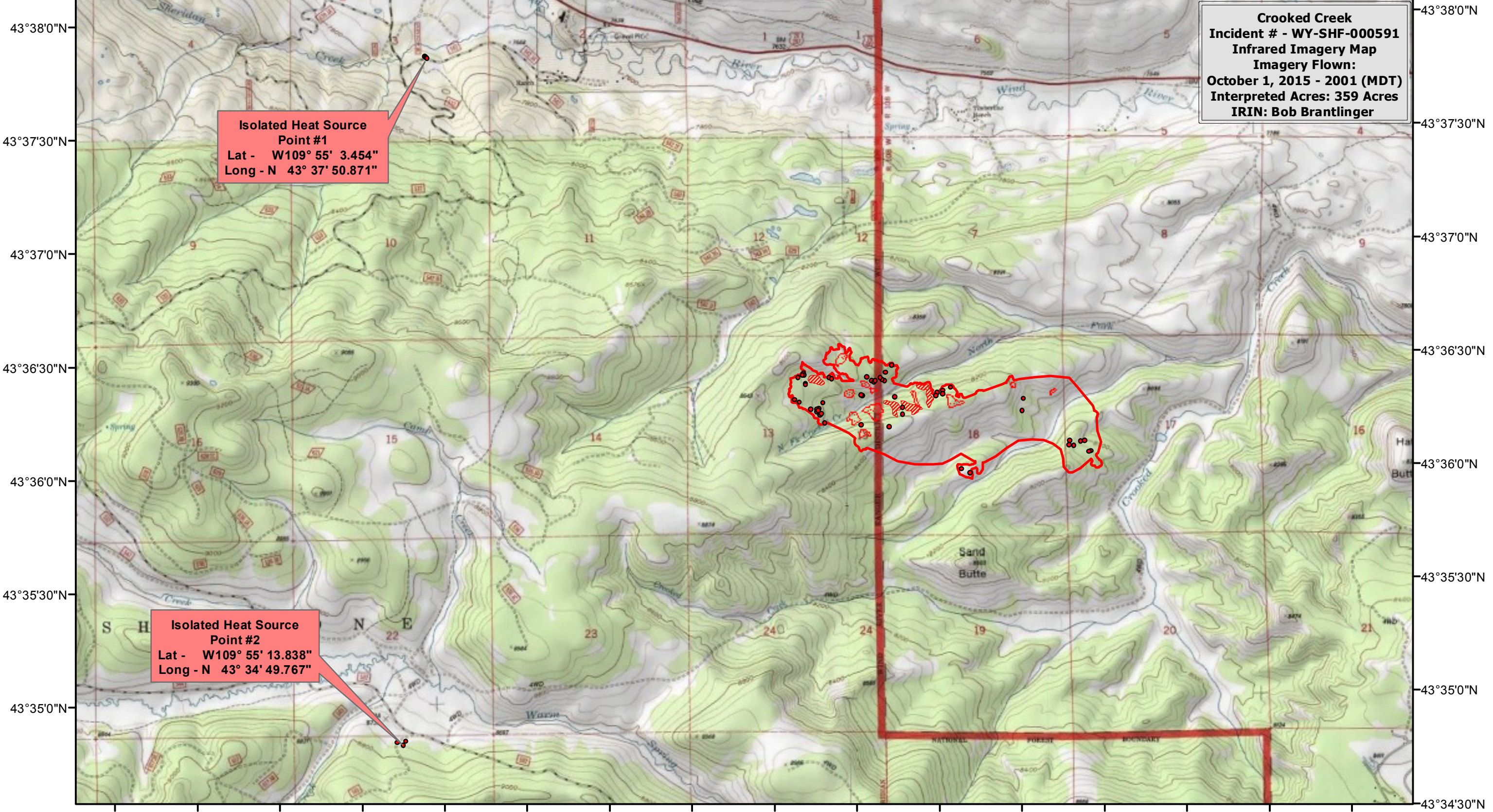


109°57'0"W 109°56'30"W 109°56'0"W 109°55'30"W 109°55'0"W 109°54'30"W 109°54'0"W 109°53'30"W 109°53'0"W 109°52'30"W 109°52'0"W 109°51'30"W 109°51'0"W 109°50'30"W 109°50'0"W 109°49'30"W



**Crooked Creek**  
**Incident # - WY-SHF-000591**  
**Infrared Imagery Map**  
**Imagery Flown:**  
**October 1, 2015 - 2001 (MDT)**  
**Interpreted Acres: 359 Acres**  
**IRIN: Bob Brantlinger**

**Isolated Heat Source**  
**Point #1**  
 Lat - W109° 55' 3.454"  
 Long - N 43° 37' 50.871"

**Isolated Heat Source**  
**Point #2**  
 Lat - W109° 55' 13.838"  
 Long - N 43° 34' 49.767"

**Legend**

- Heat Perimeter**
- Intense Heat**
- Isolated Heat Source**
- Scattered Heat Source**

