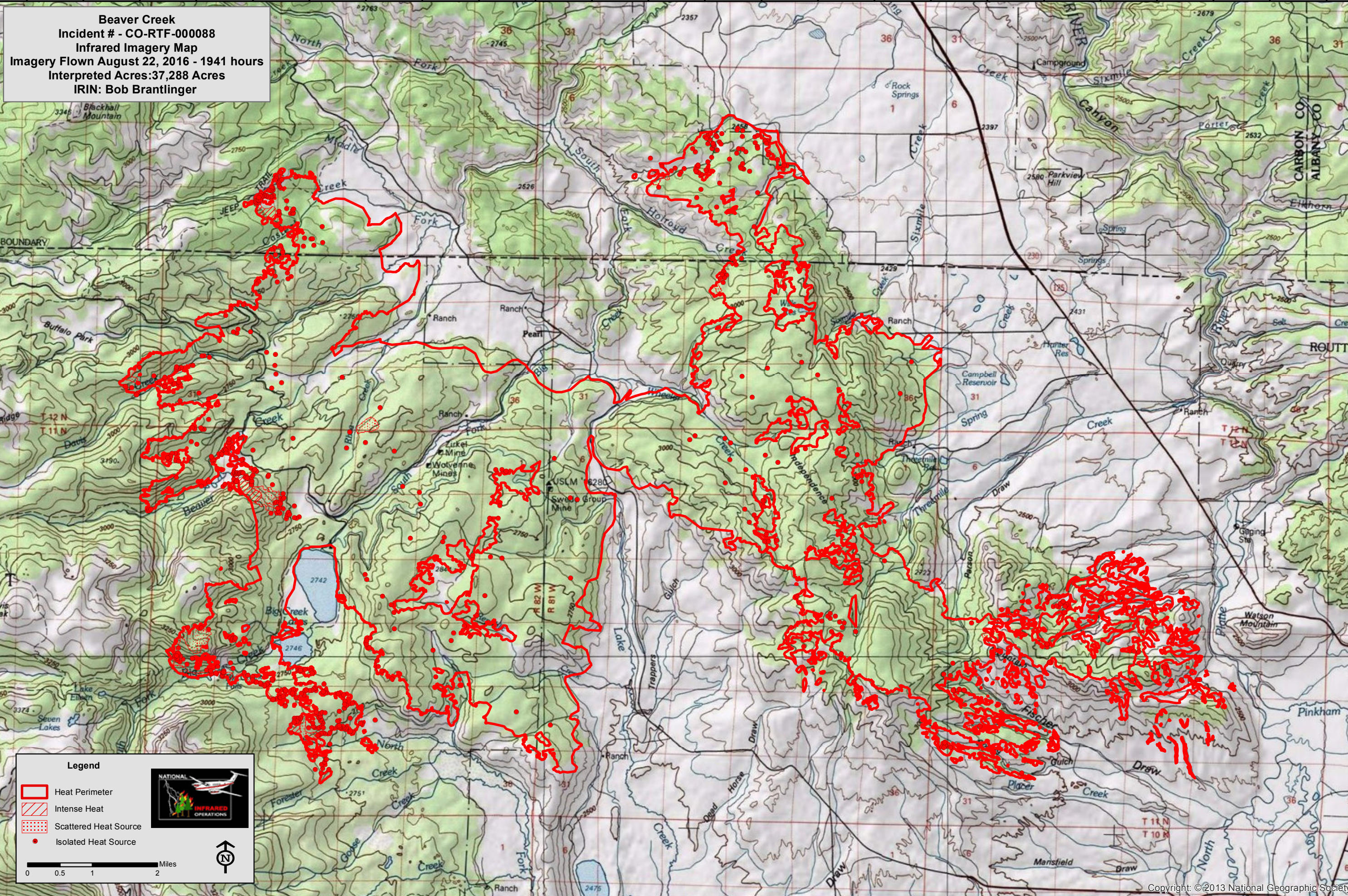




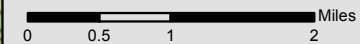
106°42'0"W 106°41'0"W 106°40'0"W 106°39'0"W 106°38'0"W 106°37'0"W 106°36'0"W 106°35'0"W 106°34'0"W 106°33'0"W 106°32'0"W 106°31'0"W 106°30'0"W 106°29'0"W 106°28'0"W 106°27'0"W 106°26'0"W 106°25'0"W 106°24'0"W 106°23'0"W 106°22'0"W 106°21'0"W 106°20'0"W 106°19'0"W



Beaver Creek
Incident # - CO-RTF-000088
Infrared Imagery Map
Imagery Flown August 22, 2016 - 1941 hours
Interpreted Acres: 37,288 Acres
IRIN: Bob Brantlinger

Legend

- Heat Perimeter
- Intense Heat
- Scattered Heat Source
- Isolated Heat Source

106°42'0"W 106°41'0"W 106°40'0"W 106°39'0"W 106°38'0"W 106°37'0"W 106°36'0"W 106°35'0"W 106°34'0"W 106°33'0"W 106°32'0"W 106°31'0"W 106°30'0"W 106°29'0"W 106°28'0"W 106°27'0"W 106°26'0"W 106°25'0"W 106°24'0"W 106°23'0"W 106°22'0"W 106°21'0"W 106°20'0"W 106°19'0"W