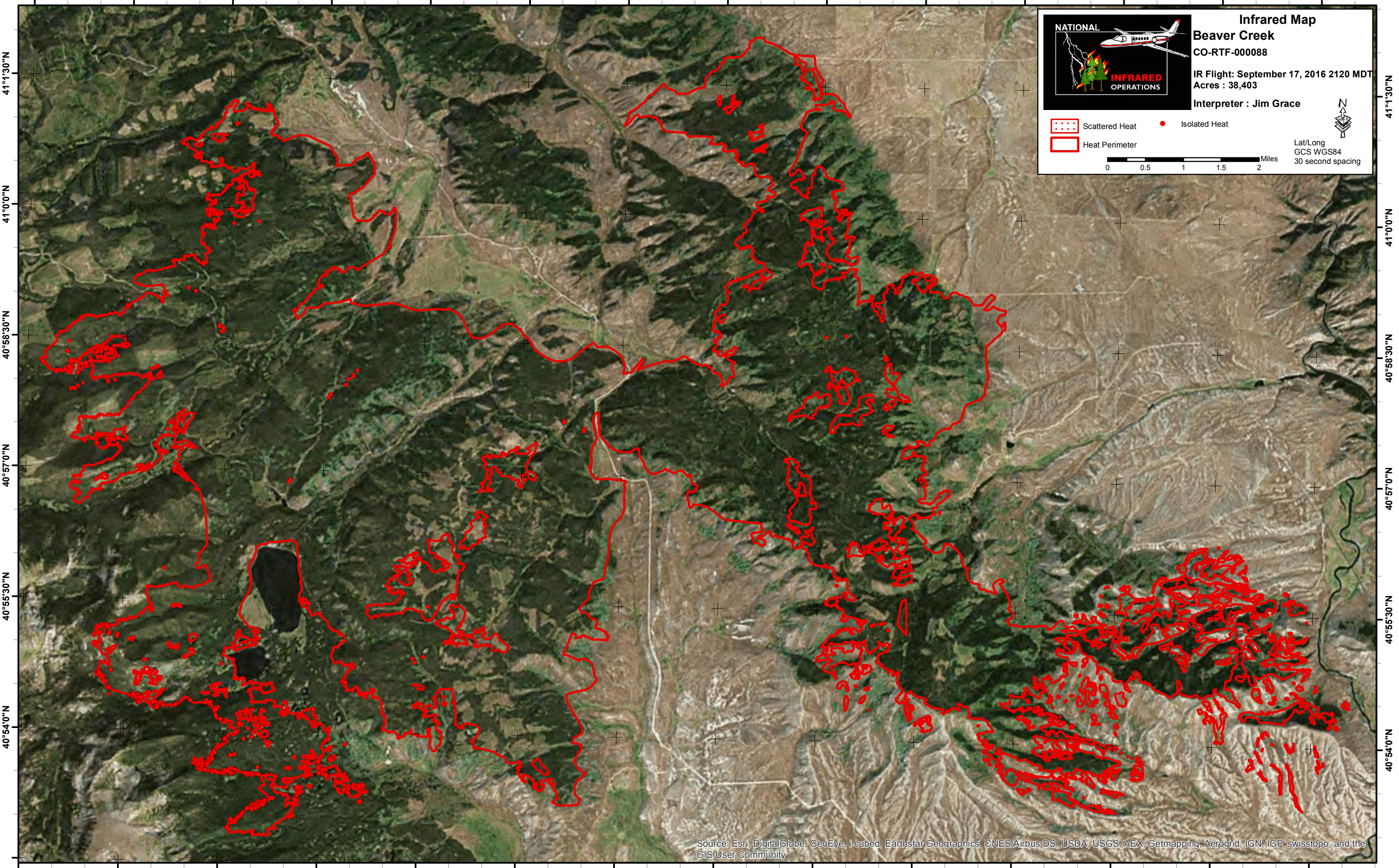



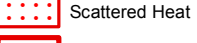

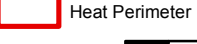
106°40'30"W 106°39'0"W 106°37'30"W 106°36'0"W 106°34'30"W 106°33'0"W 106°31'30"W 106°30'0"W 106°28'30"W 106°27'0"W 106°25'30"W 106°24'0"W 106°22'30"W 106°21'0"W

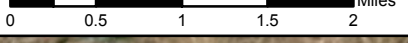


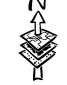
NATIONAL

INFRARED OPERATIONS

Infrared Map
Beaver Creek
 CO-RTF-000088

IR Flight: September 17, 2016 2120 MDT
 Acres : 38,403
 Interpreter : Jim Grace

 Scattered Heat
  Isolated Heat
 Heat Perimeter

 Miles
 Lat/Long
 GCS WGS84
 30 second spacing



106°40'30"W 106°39'0"W 106°37'30"W 106°36'0"W 106°34'30"W 106°33'0"W 106°31'30"W 106°30'0"W 106°28'30"W 106°27'0"W 106°25'30"W 106°24'0"W 106°22'30"W 106°21'0"W

Source: Esri, DigitalGlobe, GeoEye, i-cubed, Earthstar Geographics, CNES/Airbus DS, USDA, USGS, AEX, Getmapping, Aerogrid, IGN, IGP, swisstopo, and the GIS User Community