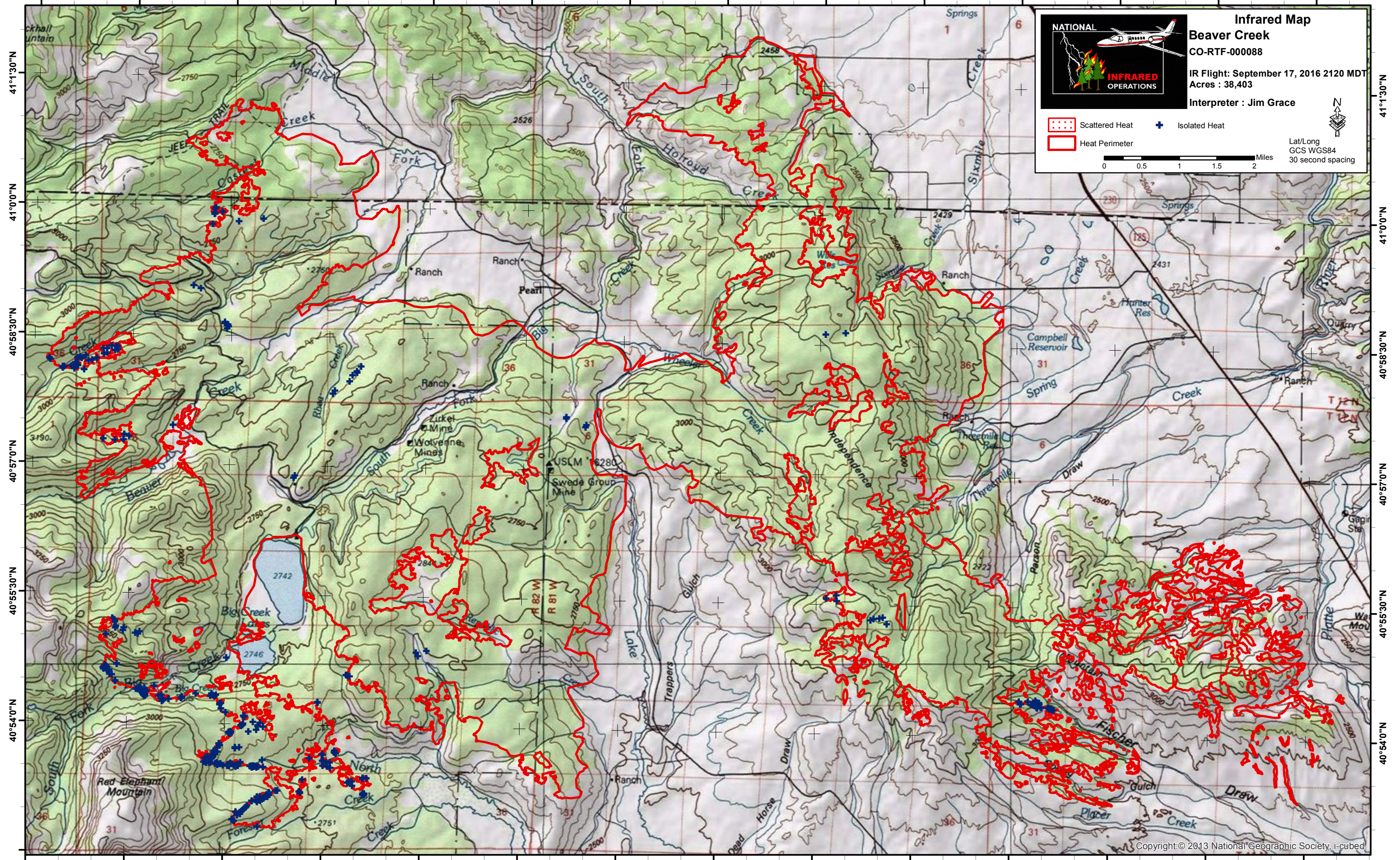


106°40'30"W 106°39'0"W 106°37'30"W 106°36'0"W 106°34'30"W 106°33'0"W 106°31'30"W 106°30'0"W 106°28'30"W 106°27'0"W 106°25'30"W 106°24'0"W 106°22'30"W 106°21'0"W



NATIONAL INFRARED OPERATIONS

Infrared Map
Beaver Creek
 CO-RTF-000088
 IR Flight: September 17, 2016 2120 MDT
 Acres : 38,403
 Interpreter : Jim Grace

Scattered Heat Isolated Heat
 Heat Perimeter

0 0.5 1 1.5 2 Miles
 Lat/Long
 GCS WGS84
 30 second spacing

106°40'30"W 106°39'0"W 106°37'30"W 106°36'0"W 106°34'30"W 106°33'0"W 106°31'30"W 106°30'0"W 106°28'30"W 106°27'0"W 106°25'30"W 106°24'0"W 106°22'30"W 106°21'0"W