



BEAVER CREEK FIRE

CO-RTF-000088

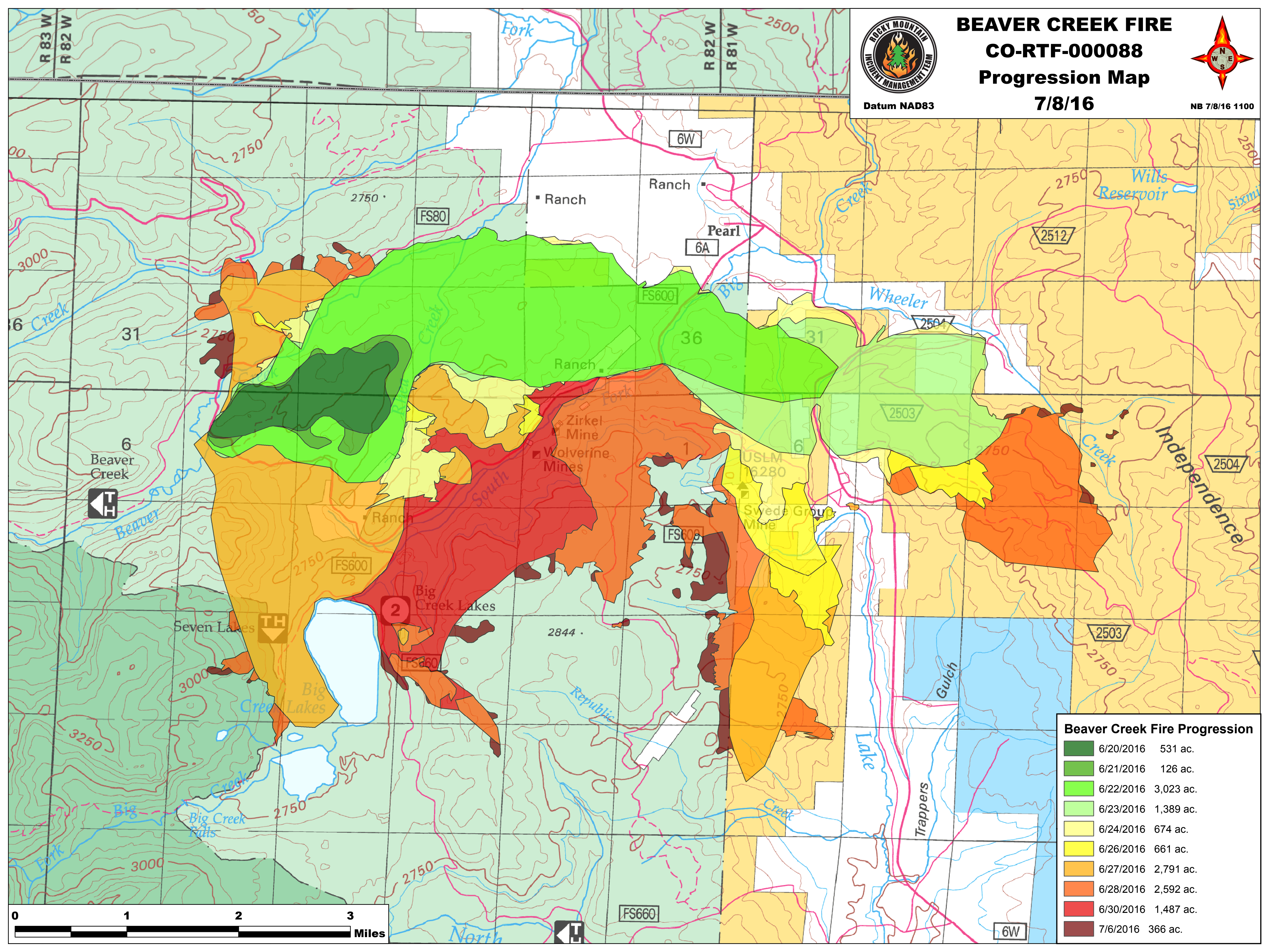
Progression Map



Datum NAD83

7/8/16

NB 7/8/16 1100



Beaver Creek Fire Progression		
	6/20/2016	531 ac.
	6/21/2016	126 ac.
	6/22/2016	3,023 ac.
	6/23/2016	1,389 ac.
	6/24/2016	674 ac.
	6/26/2016	661 ac.
	6/27/2016	2,791 ac.
	6/28/2016	2,592 ac.
	6/30/2016	1,487 ac.
	7/6/2016	366 ac.

