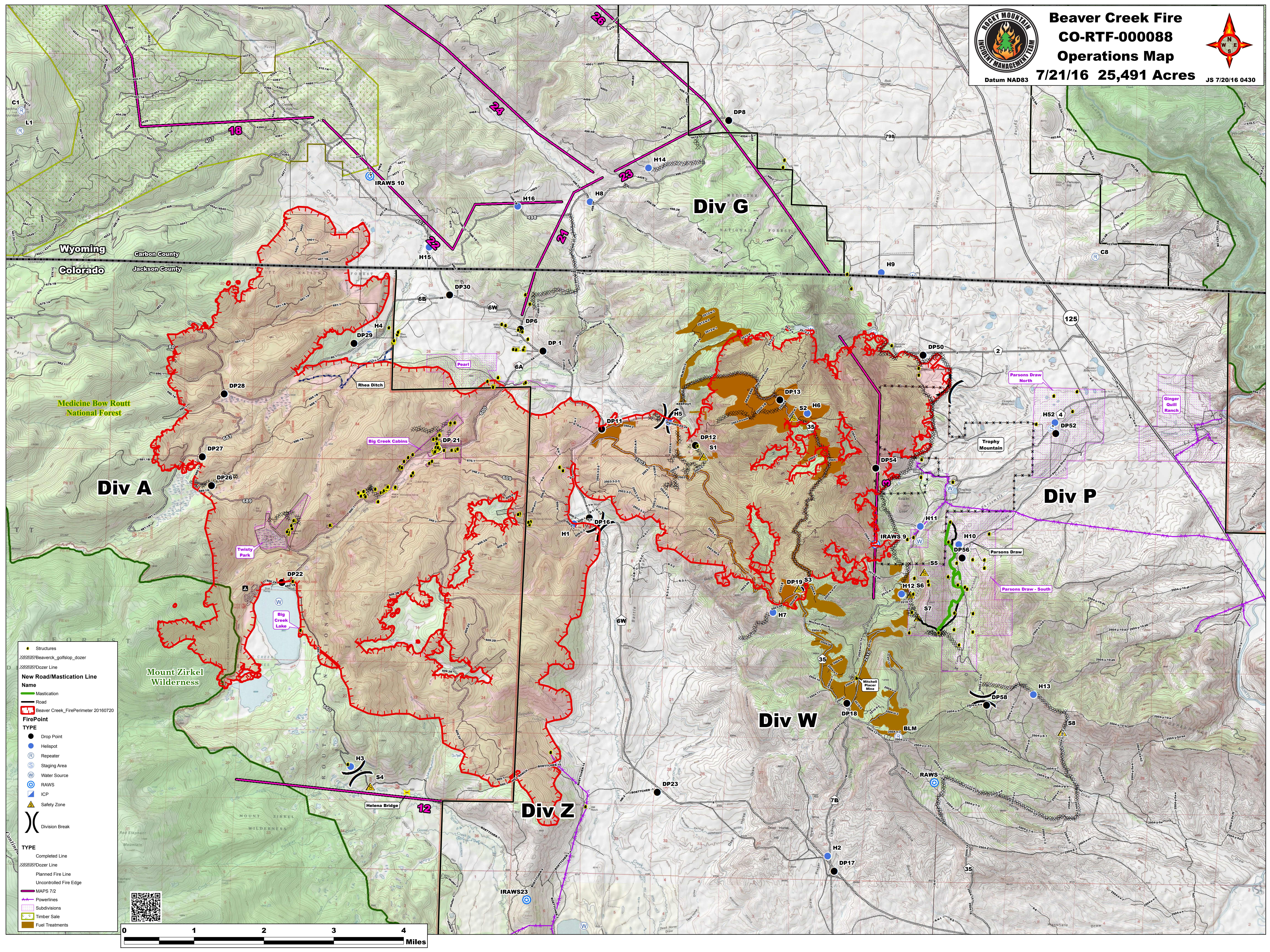




**Beaver Creek Fire**  
**CO-RTF-00088**  
**Operations Map**



Datum NAD83 **7/21/16 25,491 Acres** JS 7/20/16 0430



**Structures**

- Structures

**New Road/Mastication Line**

- Mastication
- Road

**FirePoint**

**TYPE**

- Drop Point
- Helispot
- Ⓡ Repeater
- Ⓢ Staging Area
- Ⓦ Water Source
- Ⓡ RAWs
- Ⓡ ICP
- ▲ Safety Zone
- ⌋ Division Break

**TYPE**

- Completed Line
- Dozer Line
- Planned Fire Line
- Uncontrolled Fire Edge
- MAPS 7/2
- Powerlines
- Subdivisions
- Timber Sale
- Fuel Treatments

