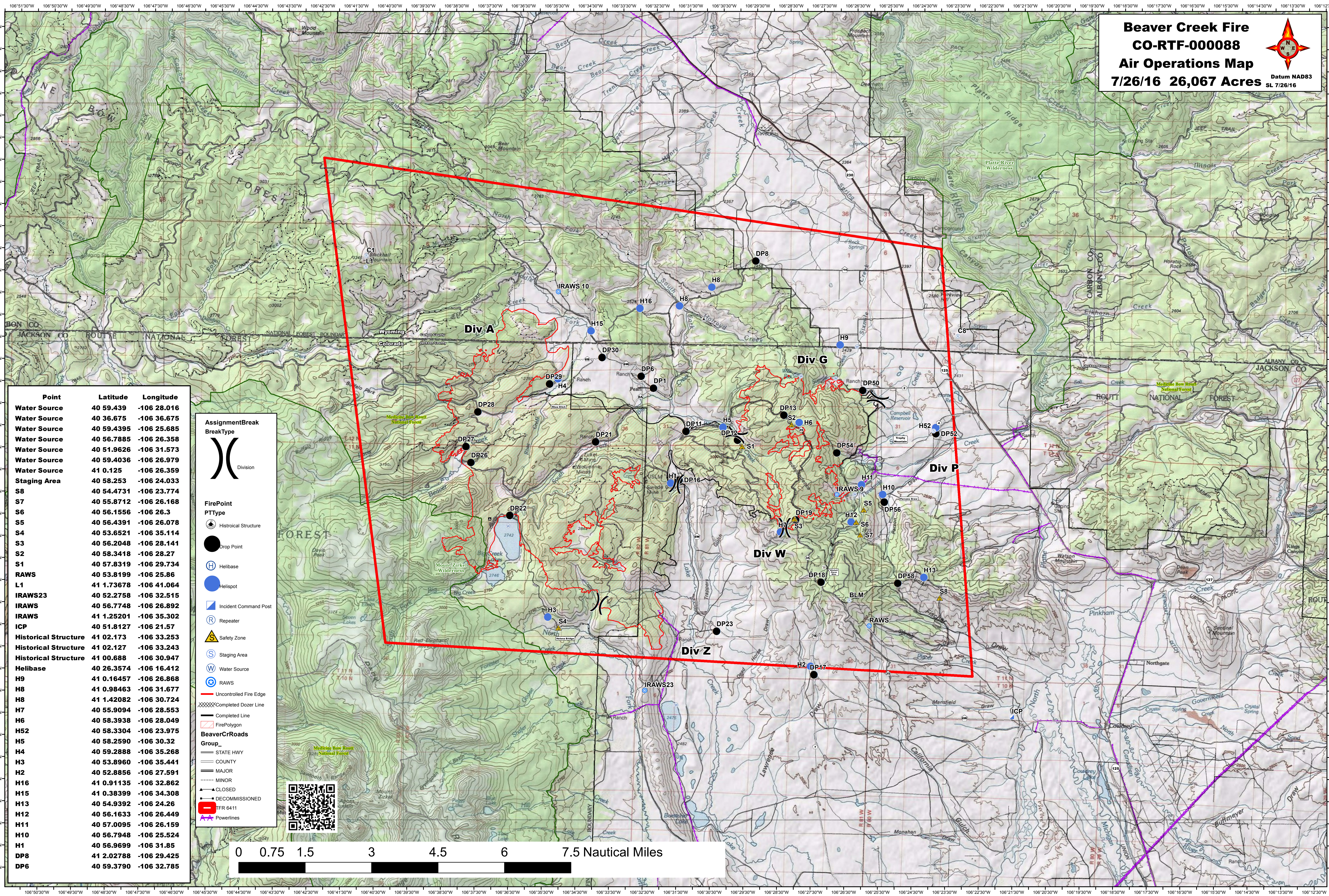
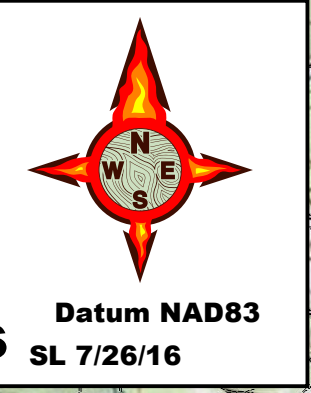


Beaver Creek Fire
CO-RTF-000088
Air Operations Map
7/26/16 26,067 Acres



Point	Latitude	Longitude
Water Source	40 59.439	-106 28.016
Water Source	40 36.675	-106 36.675
Water Source	40 59.4395	-106 25.685
Water Source	40 56.7885	-106 26.358
Water Source	40 51.9626	-106 31.573
Water Source	40 59.4036	-106 26.979
Water Source	41 0.125	-106 26.359
Staging Area	40 58.253	-106 24.033
S8	40 54.4731	-106 23.774
S7	40 55.8712	-106 26.168
S6	40 56.1556	-106 26.3
S5	40 56.4391	-106 26.078
S4	40 53.6521	-106 35.114
S3	40 56.2048	-106 28.141
S2	40 58.3418	-106 28.27
S1	40 57.8319	-106 29.734
RAWS	40 53.8199	-106 25.86
L1	41 1.73678	-106 41.064
IRAWS23	40 52.2758	-106 32.515
IRAWS	40 56.7748	-106 26.892
IRAWS	41 1.25201	-106 35.302
ICP	40 51.8127	-106 21.57
Historical Structure	41 02.173	-106 33.253
Historical Structure	41 02.127	-106 33.243
Historical Structure	41 00.688	-106 30.947
Helibase	40 26.3574	-106 16.412
H9	41 0.16457	-106 26.868
H8	41 0.98463	-106 31.677
H8	41 1.42082	-106 30.724
H7	40 55.9094	-106 28.553
H6	40 58.3938	-106 28.049
H52	40 58.3304	-106 23.975
H5	40 58.2590	-106 30.32
H4	40 59.2888	-106 35.268
H3	40 53.8960	-106 35.441
H2	40 52.8856	-106 27.591
H16	41 0.91135	-106 32.862
H15	41 0.38399	-106 34.308
H13	40 54.9392	-106 24.26
H12	40 56.1633	-106 26.449
H11	40 57.0095	-106 26.159
H10	40 56.7948	-106 25.524
H1	40 56.9699	-106 31.85
DP8	41 2.02788	-106 29.425
DP6	40 59.3790	-106 32.785

AssignmentBreak
BreakType

Division

FirePoint
PTType

- Historical Structure
- Drop Point
- Helibase
- Helispot
- Incident Command Post
- Repeater
- Safety Zone
- Staging Area
- Water Source
- RAWS

Uncontrolled Fire Edge

Completed Dozer Line

FirePolygon

BeaverCrRoads

Group_

- STATE HWY
- COUNTY
- MAJOR
- MINOR
- CLOSED
- DECOMMISSIONED
- IFR 6411
- Powerlines

