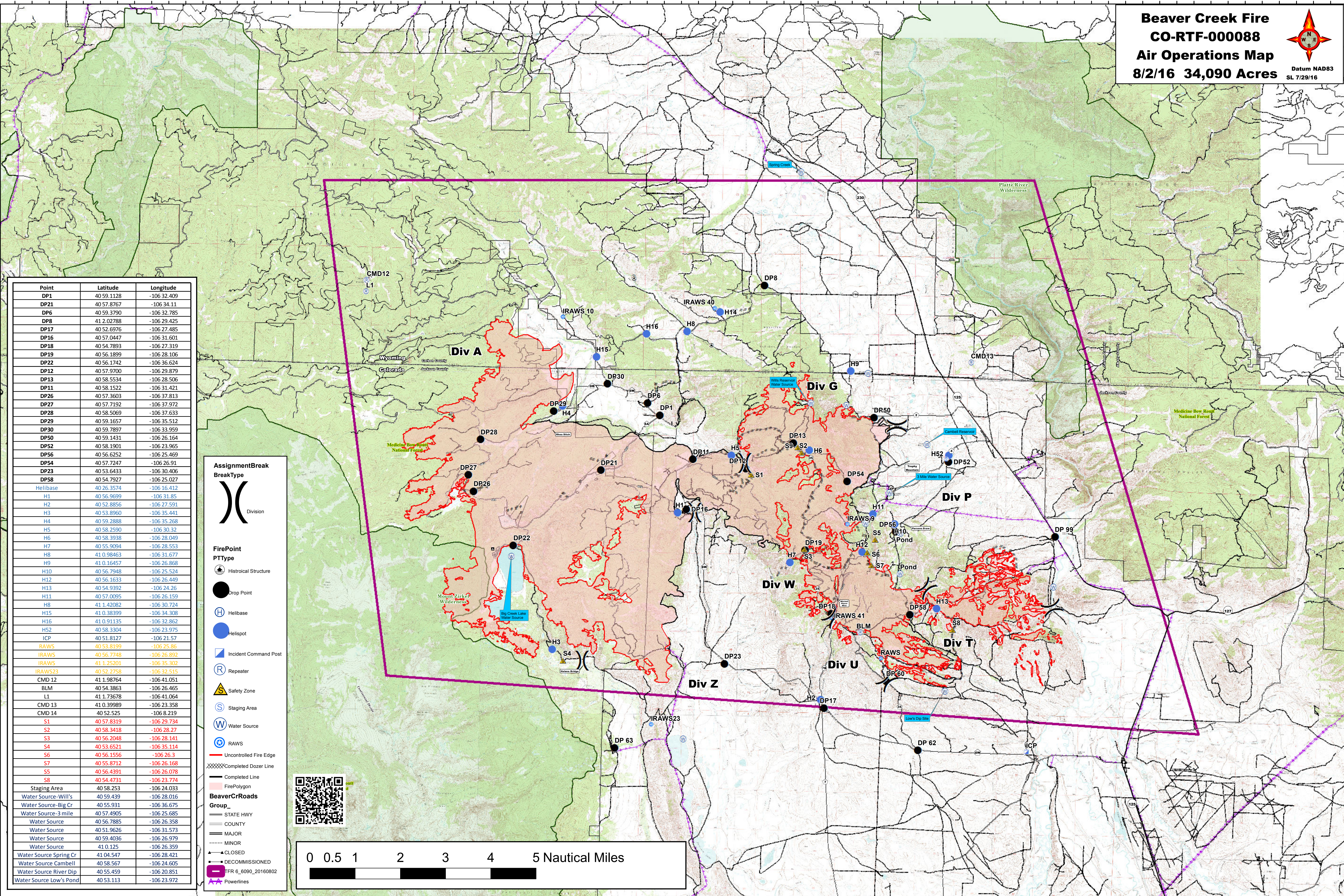
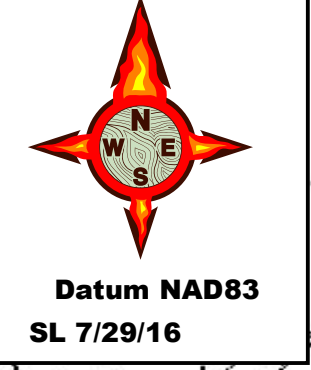


**Beaver Creek Fire**  
**CO-RTF-000088**  
**Air Operations Map**  
**8/2/16 34,090 Acres**



Point	Latitude	Longitude
DP1	40 59.1128	-106 32.409
DP21	40 57.8767	-106 34.11
DP6	40 59.3790	-106 32.785
DP8	41 2.02788	-106 29.425
DP17	40 52.6976	-106 27.485
DP16	40 57.0447	-106 31.601
DP18	40 54.7893	-106 27.319
DP19	40 56.1899	-106 28.106
DP22	40 56.1742	-106 36.624
DP12	40 57.9700	-106 29.879
DP13	40 58.5534	-106 28.506
DP11	40 58.1522	-106 31.421
DP26	40 57.3603	-106 37.813
DP27	40 57.7192	-106 37.972
DP28	40 58.5069	-106 37.633
DP29	40 59.1657	-106 35.512
DP30	40 59.7897	-106 33.959
DP50	40 59.1431	-106 26.164
DP52	40 58.1901	-106 23.965
DP56	40 56.6252	-106 25.469
DP54	40 57.7247	-106 26.91
DP23	40 53.6433	-106 30.406
DP58	40 54.7927	-106 25.027
Helibase	40 26.3574	-106 16.412
H1	40 56.9699	-106 31.85
H2	40 52.8856	-106 27.591
H3	40 53.8960	-106 35.441
H4	40 59.2888	-106 35.268
H5	40 58.2590	-106 30.32
H6	40 58.3938	-106 28.049
H7	40 55.9094	-106 28.553
H8	41 0.98463	-106 31.677
H9	41 0.16457	-106 26.868
H10	40 56.7948	-106 25.524
H12	40 56.1633	-106 26.449
H13	40 54.9392	-106 24.26
H11	40 57.0095	-106 26.159
H8	41 1.42082	-106 30.724
H15	41 0.38399	-106 34.308
H16	41 0.91135	-106 32.862
H52	40 58.3304	-106 23.975
ICP	40 51.8127	-106 21.57
RAW5	40 53.8199	-106 25.86
IRAW5	40 56.7748	-106 28.892
IRAW5	41 1.25201	-106 35.302
IRAW523	40 52.2758	-106 32.535
CMD 12	41 1.98764	-106 41.051
BLM	40 54.3863	-106 26.465
L1	41 1.73678	-106 41.064
CMD 13	41 0.39989	-106 23.358
CMD 14	40 52.525	-106 8.219
S1	40 57.8319	-106 29.734
S2	40 58.3418	-106 28.27
S3	40 56.2048	-106 28.141
S4	40 53.6521	-106 35.114
S6	40 56.1556	-106 26.3
S7	40 55.8712	-106 26.168
S5	40 56.4391	-106 26.078
S8	40 54.4731	-106 23.774
Staging Area	40 58.253	-106 24.033
Water Source-Will's	40 59.439	-106 28.016
Water Source-Big Cr	40 55.931	-106 36.675
Water Source-3 mile	40 57.4905	-106 25.685
Water Source	40 56.7885	-106 26.358
Water Source	40 51.9626	-106 31.573
Water Source	40 59.4036	-106 26.979
Water Source	41 0.125	-106 26.359
Water Source Spring Cr	41 04.547	-106 28.421
Water Source Cambell	40 58.567	-106 24.605
Water Source River Dip	40 55.459	-106 20.851
Water Source Low's Pond	40 53.113	-106 23.972

**AssignmentBreak BreakType**

**Division**

**FirePoint PType**

- Historical Structure
- Drop Point
- Helibase
- Helispot
- Incident Command Post
- Repeater
- Safety Zone
- Staging Area
- Water Source
- RAW5
- Uncontrolled Fire Edge
- Completed Dozer Line
- Completed Line
- Fire Polygon

**BeaverCrRoads Group**

- STATE HWY
- COUNTY
- MAJOR
- MINOR
- CLOSED
- DECOMMISSIONED
- TFR 6\_6090\_20160802
- Powerlines

