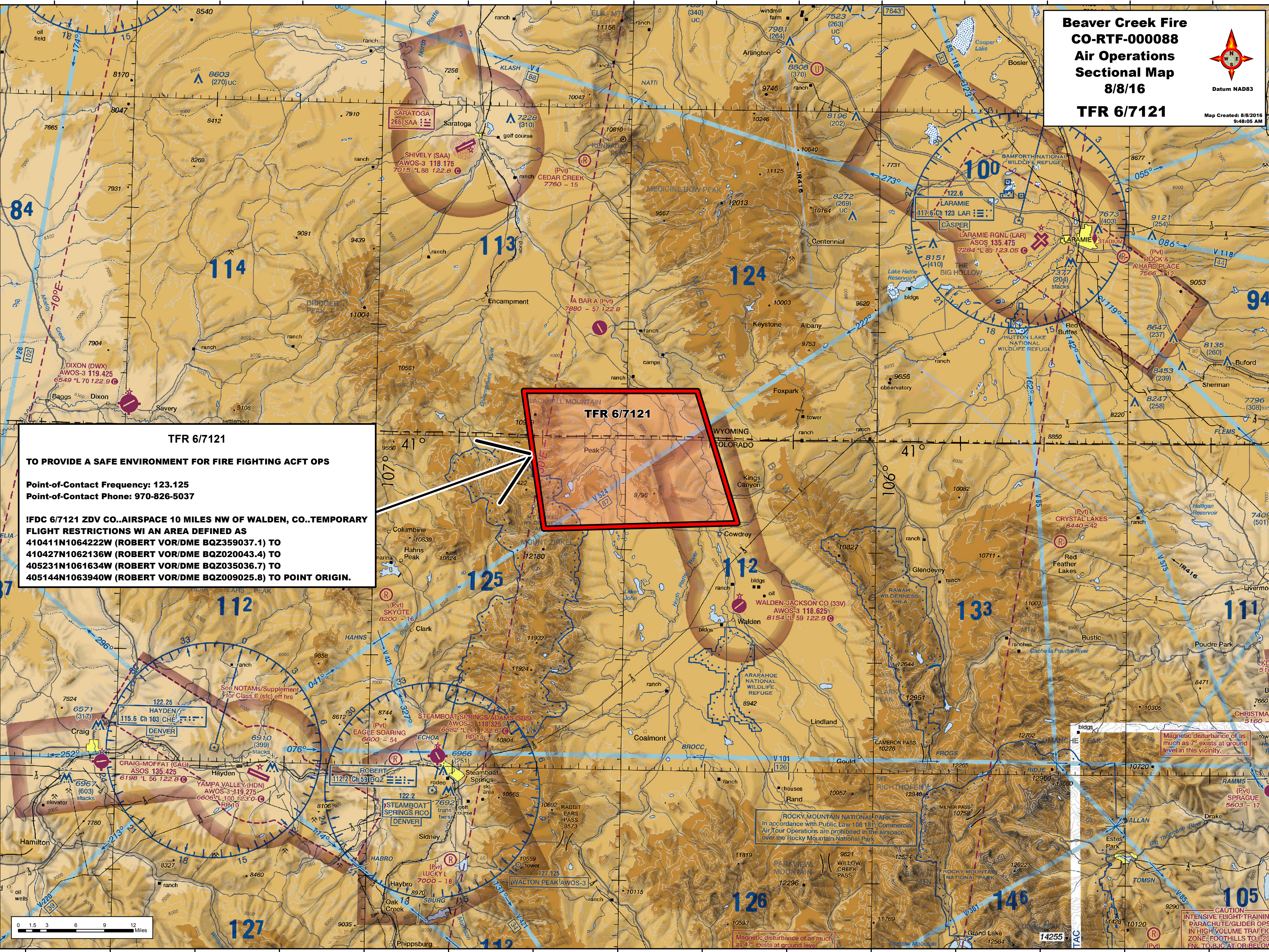


**Beaver Creek Fire
CO-RTF-00088
Air Operations
Sectional Map
8/8/16
TFR 6/7121**



Map Created: 8/8/2016
9:48:05 AM

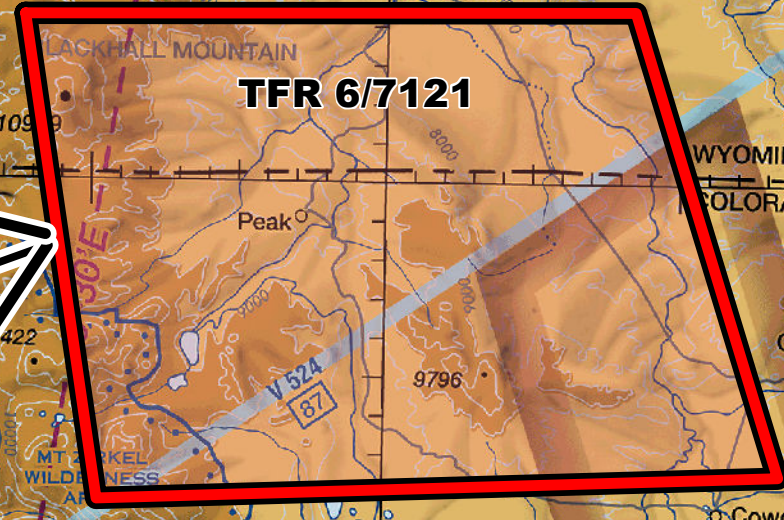


TFR 6/7121

TO PROVIDE A SAFE ENVIRONMENT FOR FIRE FIGHTING ACFT OPS

Point-of-Contact Frequency: 123.125
Point-of-Contact Phone: 970-826-5037

IFDC 6/7121 ZDV CO..AIRSPACE 10 MILES NW OF WALDEN, CO..TEMPORARY FLIGHT RESTRICTIONS WI AN AREA DEFINED AS
410411N1064222W (ROBERT VOR/DME BQZ359037.1) TO
410427N1062136W (ROBERT VOR/DME BQZ020043.4) TO
405231N1061634W (ROBERT VOR/DME BQZ035036.7) TO
405144N1063940W (ROBERT VOR/DME BQZ09025.8) TO POINT ORIGIN.



ROCKY MOUNTAIN NATIONAL PARK
In accordance with Public Law 106-181, Commercial Air Tour Operations are prohibited in the airspace over the Rocky Mountain National Park.

Magnetic disturbance of as much as 7° exists at ground level in this vicinity.

CAUTION
INTENSIVE FLIGHT-TRAINING PARACHUTE/GLIDER OPS IN HIGH VOLUME TRAFFIC ZONE, FOOTHILLS TO I-25 ENL TO I-70 AT OR BELOW

