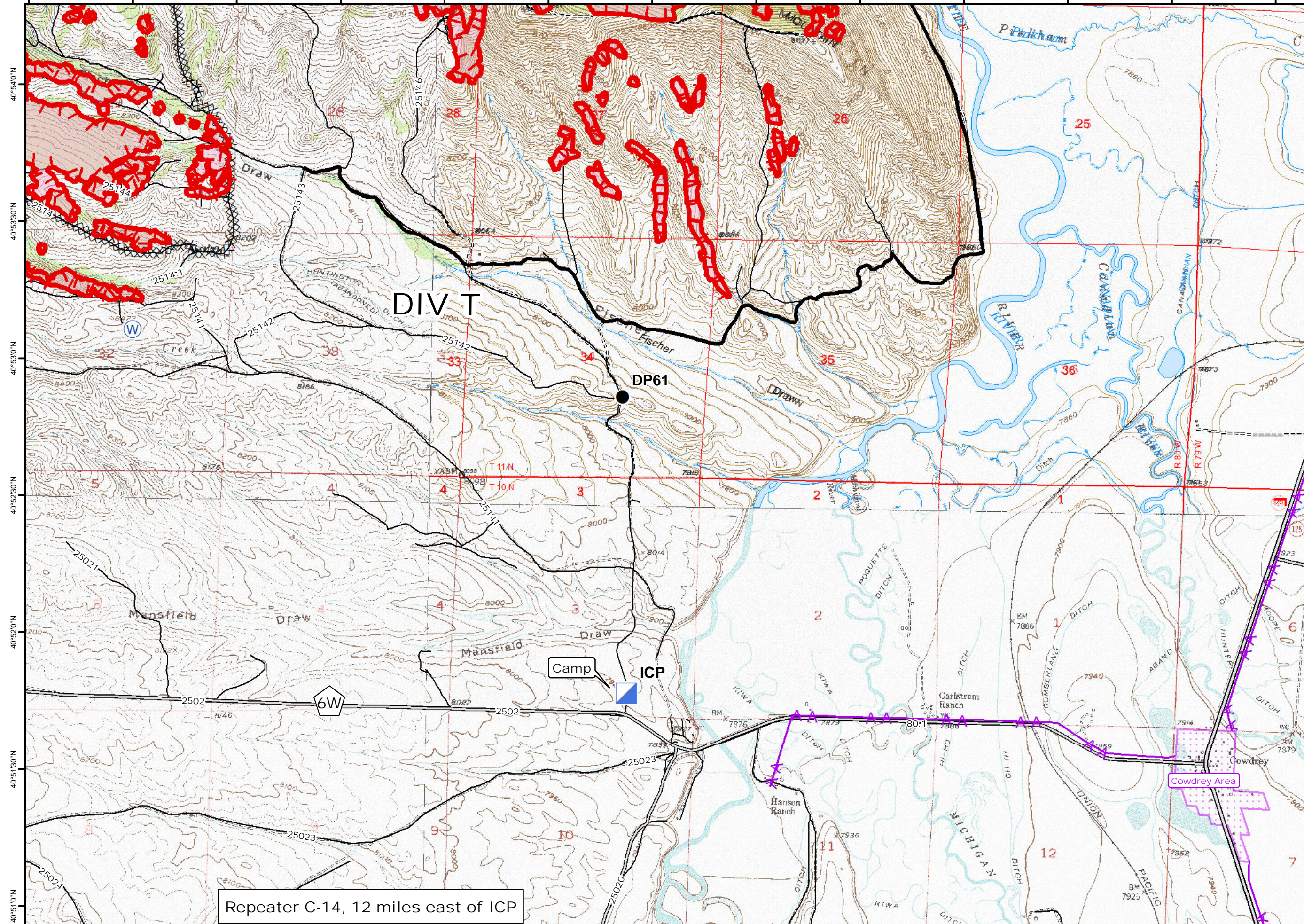
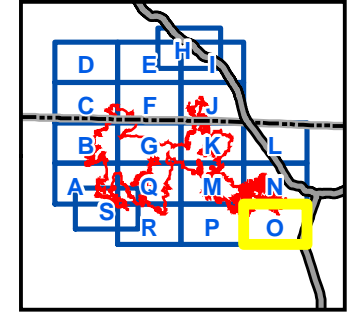


106°24'30"W 106°24'0"W 106°23'30"W 106°23'0"W 106°22'30"W 106°22'0"W 106°21'30"W 106°21'0"W 106°20'30"W 106°20'0"W 106°19'30"W 106°19'0"W 106°18'30"W



106°24'0"W 106°23'30"W 106°23'0"W 106°22'30"W 106°22'0"W 106°21'30"W 106°21'0"W 106°20'30"W 106°20'0"W 106°19'30"W 106°19'0"W 106°18'30"W

○
Map Created: 8/10/2016
11:05:04 PM



- Legend**
- Uncontrolled Fire Edge
 - Completed Dozer Line
 - Contained Fire Edge
 - Drop Point
 - Incident Command Post
 - Water Source
 - Powerlines
 - Subdivisions



0 0.25 0.5 Miles