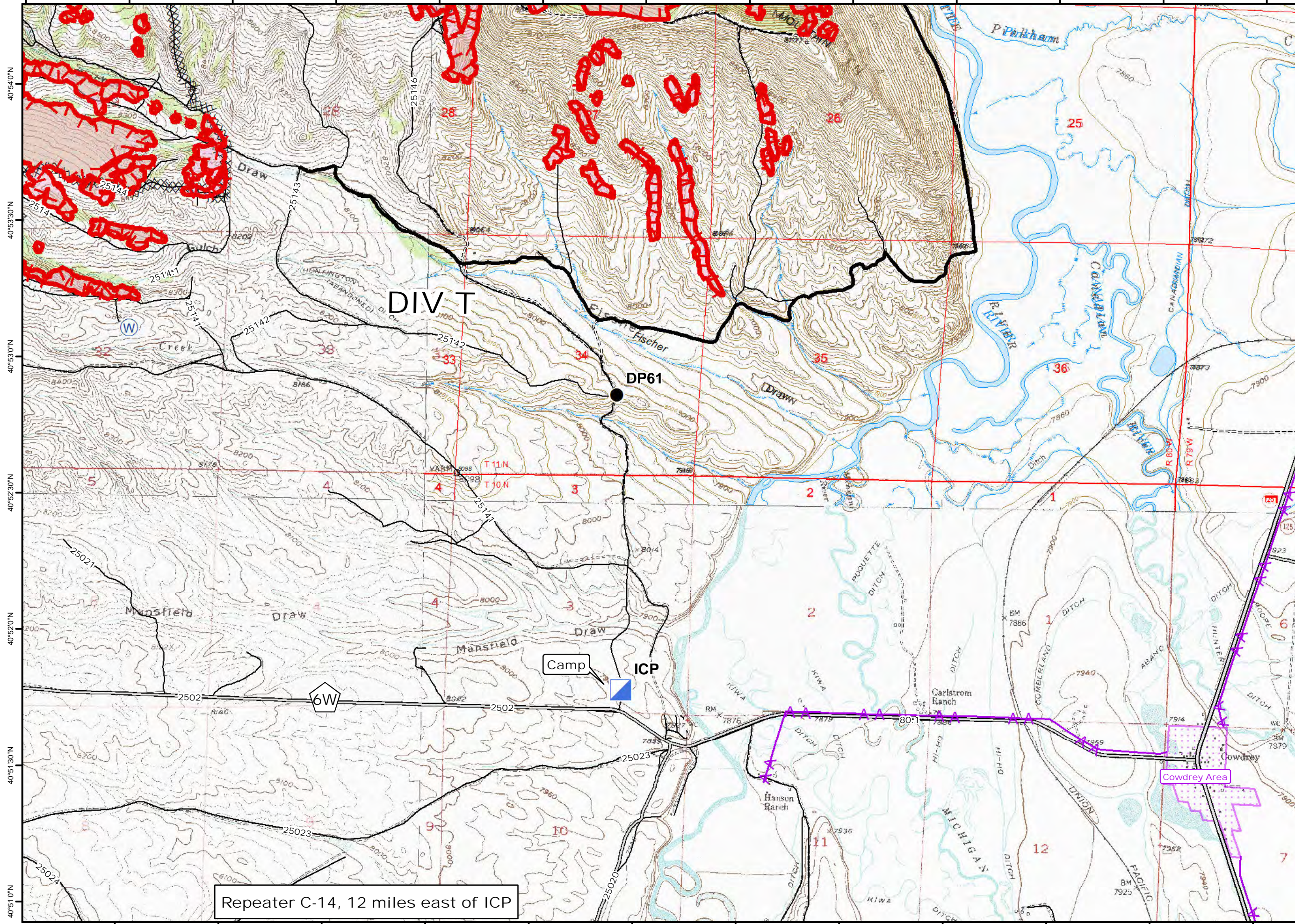


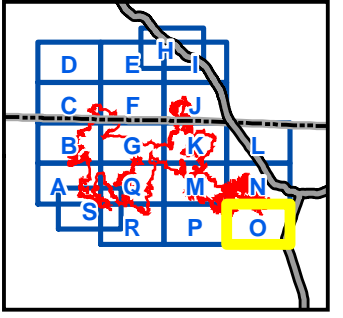
106°24'30"W 106°24'0"W 106°23'30"W 106°23'0"W 106°22'30"W 106°22'0"W 106°21'30"W 106°21'0"W 106°20'30"W 106°20'0"W 106°19'30"W 106°19'0"W 106°18'30"W



106°24'0"W 106°23'30"W 106°23'0"W 106°22'30"W 106°22'0"W 106°21'30"W 106°21'0"W 106°20'30"W 106°20'0"W 106°19'30"W 106°19'0"W 106°18'30"W

Beaver Creek CO-RTF-000088 Page 15 of 19 8/12/2016

Map Created: 8/11/2016
10:13:23 PM



- Legend**
- Uncontrolled Fire Edge
 - Completed Dozer Line
 - Contained Fire Edge
 - Drop Point
 - Incident Command Post
 - Water Source
 - Powerlines
 - Subdivisions

Repeater C-14, 12 miles east of ICP

