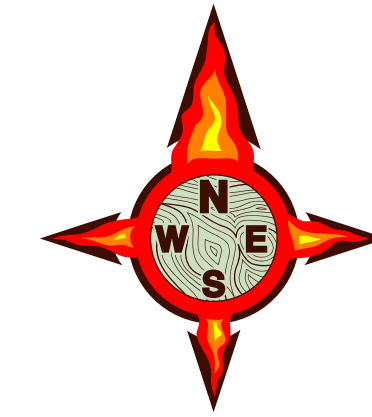
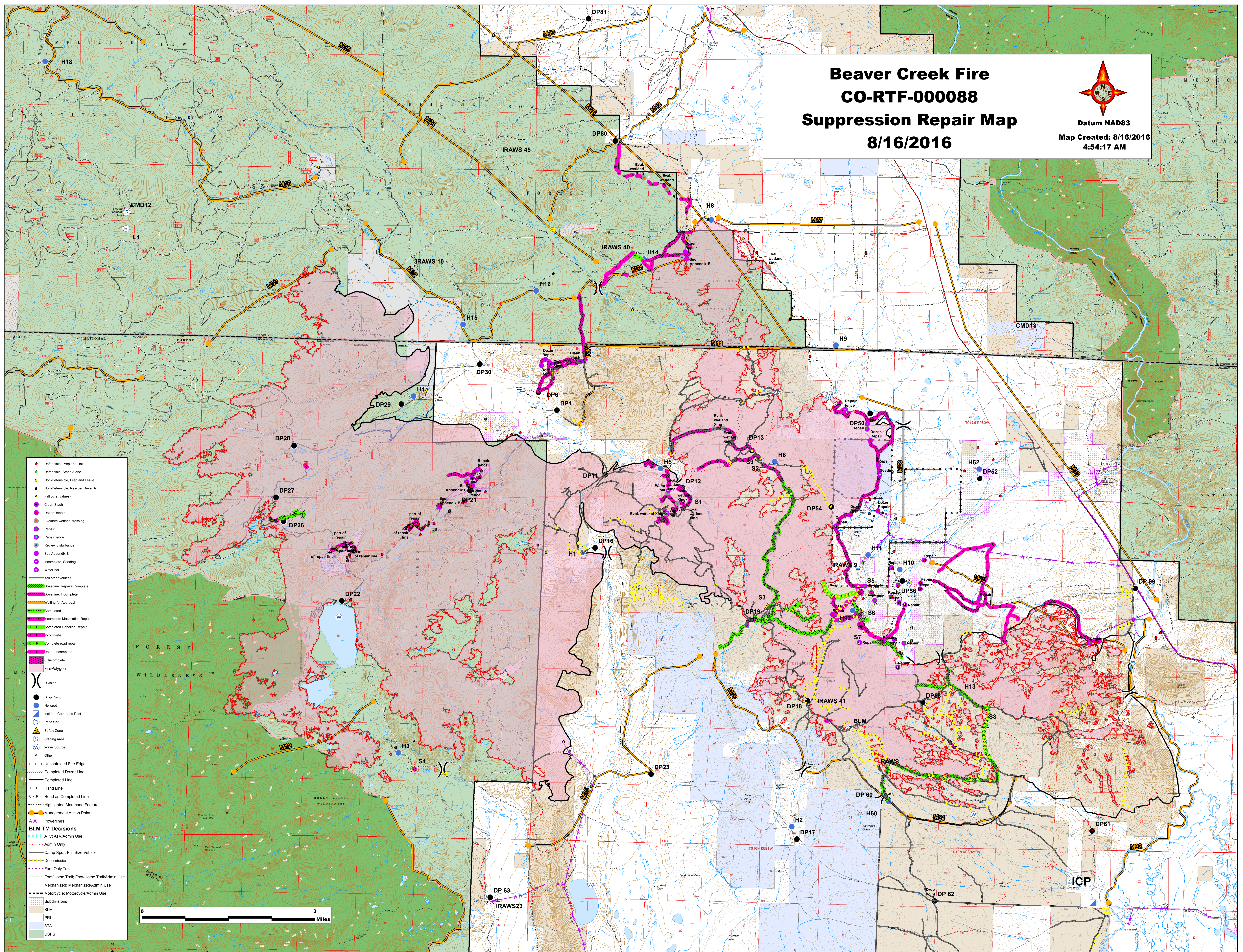


# Beaver Creek Fire CO-RTF-000088 Suppression Repair Map 8/16/2016



Datum NAD83  
Map Created: 8/16/2016  
4:54:17 AM



- Defensible, Prep and Hold
- Defensible, Stand Alone
- Non-Defensible, Prep and Leave
- Non-Defensible, Rescue, Drive By
- <all other values>
- Clean Slash
- Dozer Repair
- Evaluate wetland crossing
- Repair
- Repair fence
- Review disturbance
- See Appendix B
- Incomplete, Seeding
- Water bar
- <all other values>
- Dozerline, Repairs Complete
- Dozerline, Incomplete
- Waiting for Approval
- Completed
- Incomplete Mastication Repair
- Completed Handline Repair
- Incomplete
- Complete road repair
- Road, Incomplete
- S, Incomplete
- Fire Polygon
- ⎵ Division
- Drop Point
- Helispot
- Incident Command Post
- Repeater
- Safety Zone
- Staging Area
- Water Source
- Other
- Uncontrolled Fire Edge
- Completed Dozer Line
- Completed Line
- Hand Line
- Road as Completed Line
- Highlighted Manmade Feature
- Management Action Point
- Powerlines
- BLM TM Decisions
- ATV, ATV/Admin Use
- Admin Only
- Camp Spur, Full Size Vehicle
- Decommission
- Foot Only Trail
- Foot/Horse Trail, Foot/Horse Trail/Admin Use
- Mechanized, Mechanized/Admin Use
- Motorcycle, Motorcycle/Admin Use
- Subdivisions
- BLM
- PRI
- STA
- USFS

