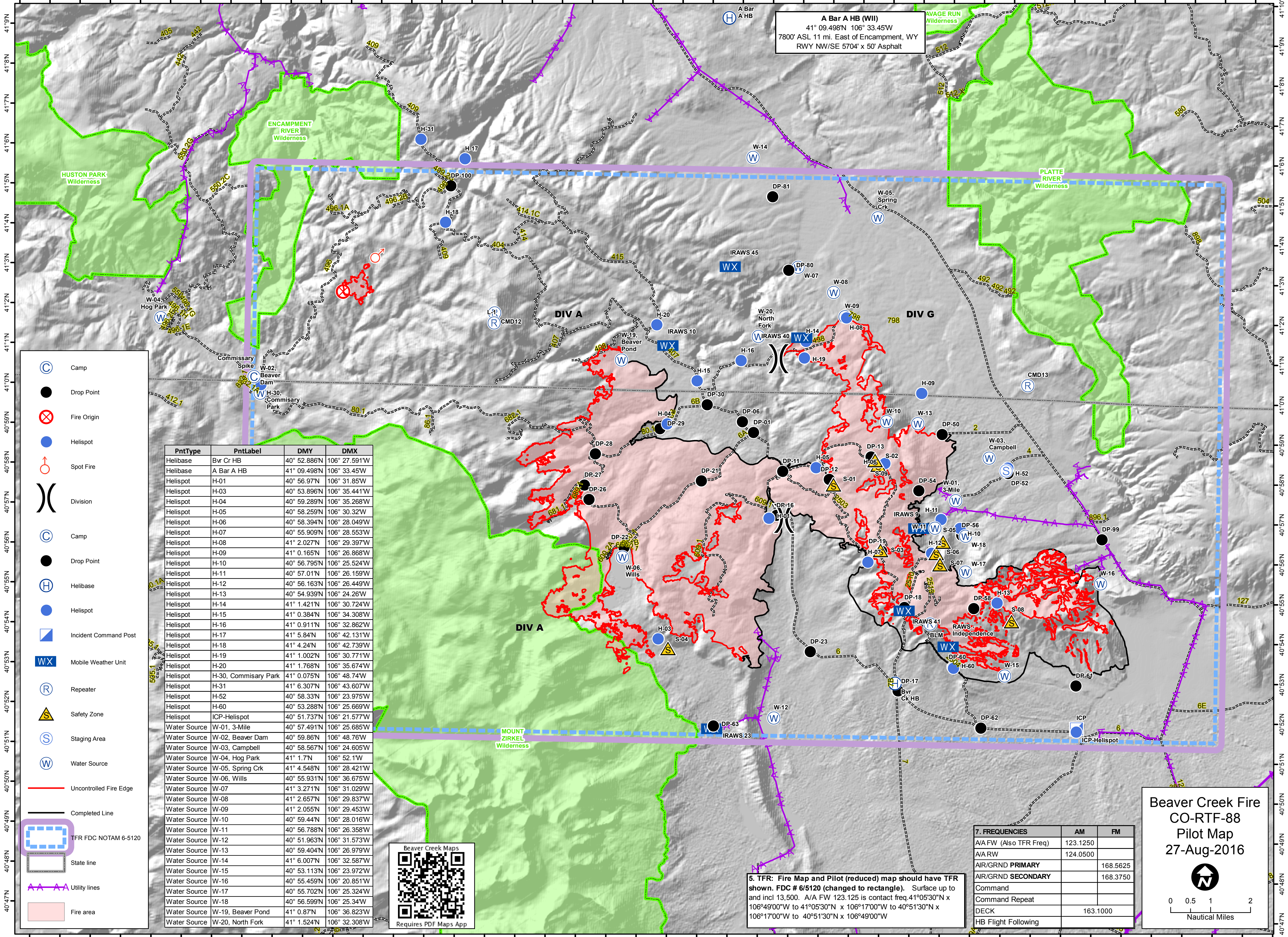


106°57'W 106°56'W 106°55'W 106°54'W 106°53'W 106°52'W 106°51'W 106°50'W 106°49'W 106°48'W 106°47'W 106°46'W 106°45'W 106°44'W 106°43'W 106°42'W 106°41'W 106°40'W 106°39'W 106°38'W 106°37'W 106°36'W 106°35'W 106°34'W 106°33'W 106°32'W 106°31'W 106°30'W 106°29'W 106°28'W 106°27'W 106°26'W 106°25'W 106°24'W 106°23'W 106°22'W 106°21'W 106°20'W 106°19'W 106°18'W 106°17'W 106°16'W



A Bar A HB (WII)
 41° 09.498'N 106° 33.45'W
 7800' ASL 11 mi. East of Encampment, WY
 RWY NW/SE 5704' x 50' Asphalt

- Camp
- Drop Point
- Fire Origin
- Helispot
- Spot Fire
- Division
- Camp
- Drop Point
- Helibase
- Helispot
- Incident Command Post
- Mobile Weather Unit
- Repeater
- Safety Zone
- Staging Area
- Water Source
- Uncontrolled Fire Edge
- Completed Line
- TFR FDC NOTAM 6-5120
- State line
- Utility lines
- Fire area

PntType	PntLabel	DMY	DMX
Helibase	Bvr Cr HB	40° 52.886'N	106° 27.591'W
Helibase	A Bar A HB	41° 09.498'N	106° 33.45'W
Helispot	H-01	40° 56.97'N	106° 31.85'W
Helispot	H-03	40° 53.896'N	106° 35.441'W
Helispot	H-04	40° 59.289'N	106° 35.268'W
Helispot	H-05	40° 58.259'N	106° 30.32'W
Helispot	H-06	40° 58.394'N	106° 28.049'W
Helispot	H-07	40° 55.909'N	106° 28.553'W
Helispot	H-08	41° 2.027'N	106° 29.397'W
Helispot	H-09	41° 0.165'N	106° 26.868'W
Helispot	H-10	40° 56.795'N	106° 25.524'W
Helispot	H-11	40° 57.01'N	106° 26.159'W
Helispot	H-12	40° 56.163'N	106° 26.449'W
Helispot	H-13	40° 54.939'N	106° 24.26'W
Helispot	H-14	41° 1.421'N	106° 30.724'W
Helispot	H-15	41° 0.384'N	106° 34.308'W
Helispot	H-16	41° 0.911'N	106° 32.862'W
Helispot	H-17	41° 5.84'N	106° 42.131'W
Helispot	H-18	41° 4.24'N	106° 42.739'W
Helispot	H-19	41° 1.002'N	106° 30.771'W
Helispot	H-20	41° 1.768'N	106° 35.674'W
Helispot	H-30, Commsary Park	41° 0.075'N	106° 48.74'W
Helispot	H-31	41° 6.307'N	106° 43.607'W
Helispot	H-52	40° 58.33'N	106° 23.975'W
Helispot	H-60	40° 53.288'N	106° 25.669'W
Helispot	ICP-Helispot	40° 51.737'N	106° 21.577'W
Water Source	W-01, 3-Mile	40° 57.491'N	106° 25.685'W
Water Source	W-02, Beaver Dam	40° 59.86'N	106° 48.76'W
Water Source	W-03, Campbell	40° 58.567'N	106° 24.605'W
Water Source	W-04, Hog Park	41° 1.7'N	106° 52.1'W
Water Source	W-05, Spring Crk	41° 4.548'N	106° 28.421'W
Water Source	W-06, Wills	40° 55.931'N	106° 36.675'W
Water Source	W-07	41° 3.271'N	106° 31.029'W
Water Source	W-08	41° 2.657'N	106° 29.837'W
Water Source	W-09	41° 2.055'N	106° 29.453'W
Water Source	W-10	40° 59.44'N	106° 28.016'W
Water Source	W-11	40° 56.788'N	106° 26.358'W
Water Source	W-12	40° 51.963'N	106° 31.573'W
Water Source	W-13	40° 59.404'N	106° 26.979'W
Water Source	W-14	41° 6.007'N	106° 32.587'W
Water Source	W-15	40° 53.113'N	106° 23.972'W
Water Source	W-16	40° 55.459'N	106° 20.851'W
Water Source	W-17	40° 55.702'N	106° 25.324'W
Water Source	W-18	40° 56.599'N	106° 25.34'W
Water Source	W-19, Beaver Pond	41° 0.87'N	106° 36.823'W
Water Source	W-20, North Fork	41° 1.524'N	106° 32.308'W



5. TFR: Fire Map and Pilot (reduced) map should have TFR shown. FDC # 6/5120 (changed to rectangle). Surface up to and incl 13,500. A/A FW 123.125 is contact freq. 41°05'30"N x 106°49'00"W to 41°05'30"N x 106°17'00"W to 40°51'30"N x 106°17'00"W to 40°51'30"N x 106°49'00"W

7. FREQUENCIES	AM	FM
A/A FW (Also TFR Freq)	123.1250	
A/A RW	124.0500	
AIR/GRND PRIMARY		168.5625
AIR/GRND SECONDARY		168.3750
Command		
Command Repeat		
DECK	163.1000	
HB Flight Following		

**Beaver Creek Fire
 CO-RTF-88
 Pilot Map
 27-Aug-2016**

0 0.5 1 2
Nautical Miles