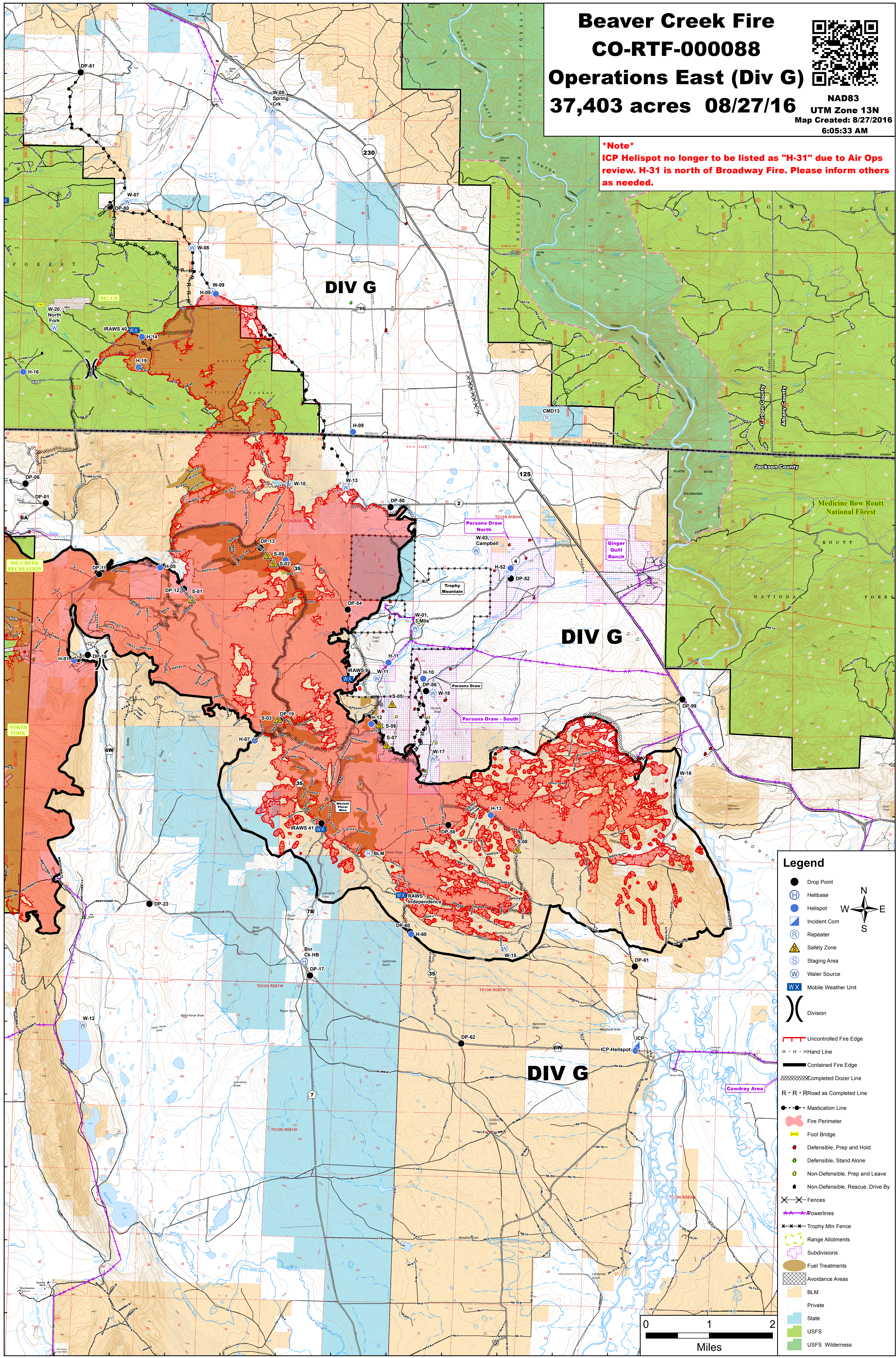


Beaver Creek Fire CO-RTF-000088 Operations East (Div G) 37,403 acres 08/27/16



NAD83
UTM Zone 13N
Map Created: 8/27/2016
6:05:33 AM

Note
ICP Helispot no longer to be listed as "H-31" due to Air Ops review. H-31 is north of Broadway Fire. Please inform others as needed.



Legend

- Drop Point
- ⊕ Helibase
- ⊙ Helispot
- ⊔ Incident Corn
- ⊠ Repeater
- ⚠ Safety Zone
- ⊙ Staging Area
- ⊕ Water Source
- WX Mobile Weather Unit
- ⎓ Division
- Uncontrolled Fire Edge
- Contained Fire Edge
- ⊘ Completed Dozer Line
- R - R Road as Completed Line
- ⊙ Mastication Line
- ⊙ Fire Perimeter
- ⊙ Foot Bridge
- ⊙ Defensible, Prep and Hold
- ⊙ Defensible, Stand Alone
- ⊙ Non-Defensible, Prep and Leave
- ⊙ Non-Defensible, Rescue, Drive By
- ⊙ Fences
- ⊙ Powerlines
- ⊙ Trophy Mtn Fence
- ⊙ Range Allotments
- ⊙ Subdivisions
- ⊙ Fuel Treatments
- ⊙ Avoidance Areas
- BLM
- Private
- State
- USFS
- USFS Wilderness