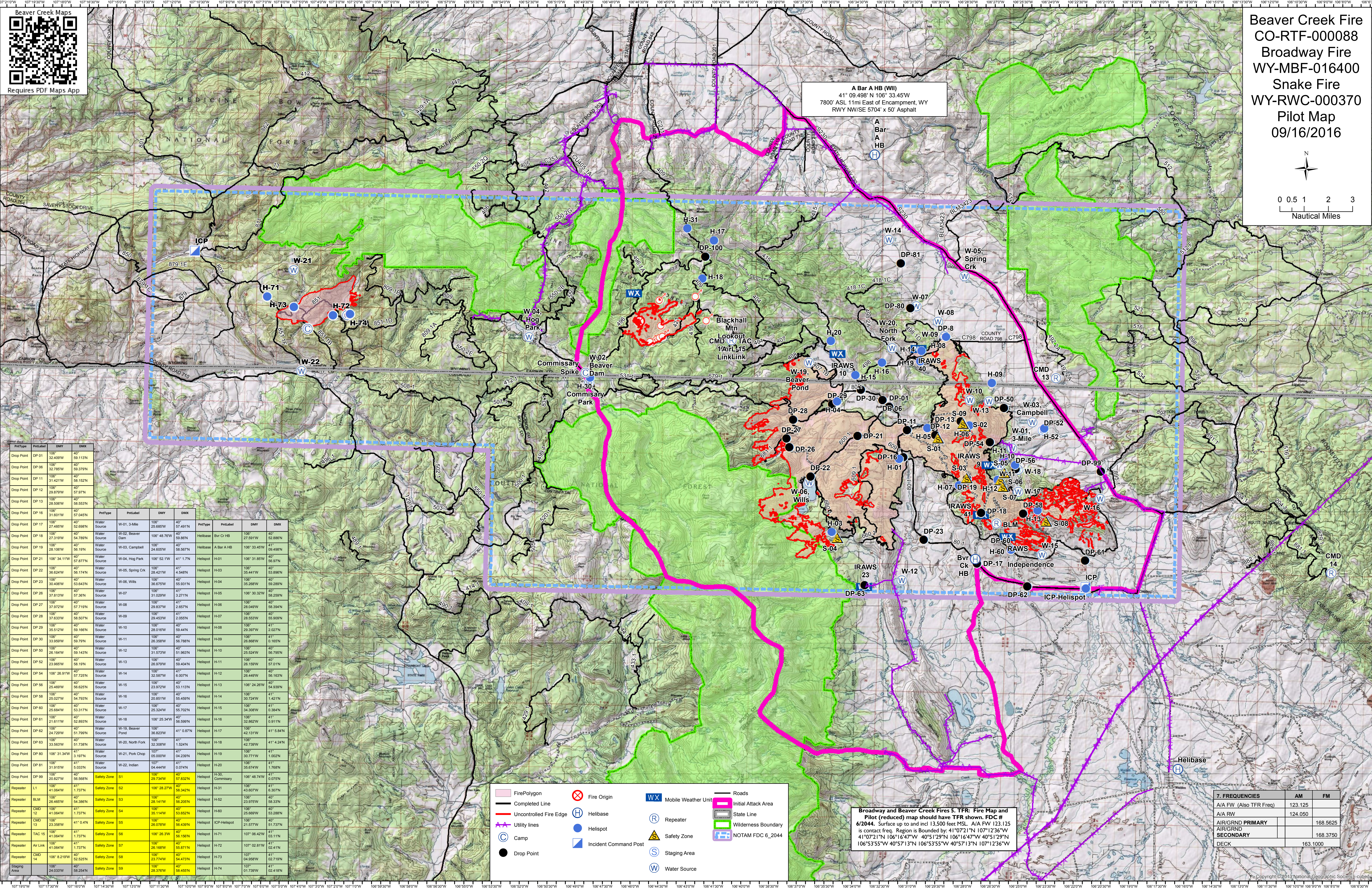
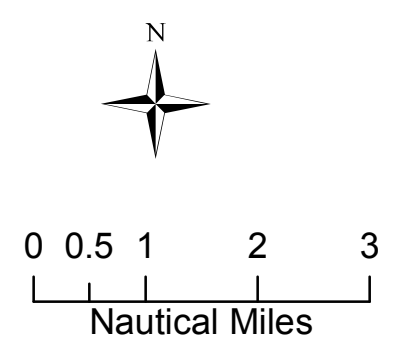




Beaver Creek Fire
 CO-RTF-00088
Broadway Fire
 WY-MBF-016400
Snake Fire
 WY-RWC-000370
Pilot Map
 09/16/2016



PostLabel	DMY	DMX	PostType	PostLabel	DMY	DMX
Drop Point DP 01	106° 32.400'W	41° 58.131'N				
Drop Point DP 06	106° 32.785'W	41° 59.379'N				
Drop Point DP 11	106° 31.421'W	41° 58.152'N				
Drop Point DP 12	106° 29.879'W	41° 57.971'N				
Drop Point DP 13	106° 28.500'W	41° 58.553'N				
Drop Point DP 16	106° 31.691'W	41° 57.045'N				
Drop Point DP 17	106° 27.485'W	41° 52.898'N	Water Source	W-01, 3-Mile	106° 25.885'W	41° 57.491'N
Drop Point DP 18	106° 27.319'W	41° 54.789'N	Water Source	W-02, Beaver Dam	106° 48.76'W	41° 59.987'N
Drop Point DP 19	106° 28.106'W	41° 56.19'N	Water Source	W-03, Campbell	106° 24.656'W	41° 58.567'N
Drop Point DP 21	106° 34.11'W	41° 52.1'W	Water Source	W-04, Hog Park	106° 52.1'W	41° 51.17'N
Drop Point DP 22	106° 36.824'W	41° 56.174'N	Water Source	W-05, Spring Crk	106° 28.421'W	41° 4.548'N
Drop Point DP 23	106° 30.406'W	41° 53.643'N	Water Source	W-06, Wills	106° 36.675'W	41° 55.931'N
Drop Point DP 26	106° 31.813'W	41° 57.26'N	Water Source	W-07	106° 31.020'W	41° 3.271'N
Drop Point DP 27	106° 37.927'W	41° 57.719'N	Water Source	W-08	106° 29.837'W	41° 2.657'N
Drop Point DP 28	106° 37.633'W	41° 56.507'N	Water Source	W-09	106° 29.453'W	41° 2.959'N
Drop Point DP 29	106° 35.512'W	41° 59.186'N	Water Source	W-10	106° 28.016'W	41° 59.44'N
Drop Point DP 30	106° 33.959'W	41° 59.79'N	Water Source	W-11	106° 26.356'W	41° 56.786'N
Drop Point DP 50	106° 26.164'W	41° 59.143'N	Water Source	W-12	106° 31.573'W	41° 51.963'N
Drop Point DP 52	106° 23.955'W	41° 58.19'N	Water Source	W-13	106° 26.979'W	41° 59.404'N
Drop Point DP 54	106° 26.91'W	41° 57.752'N	Water Source	W-14	106° 32.857'W	41° 57.807'N
Drop Point DP 56	106° 25.469'W	41° 56.825'N	Water Source	W-15	106° 23.972'W	41° 53.113'N
Drop Point DP 58	106° 25.027'W	41° 54.783'N	Water Source	W-16	106° 25.027'W	41° 54.459'N
Drop Point DP 60	106° 25.684'W	41° 53.317'N	Water Source	W-17	106° 25.324'W	41° 55.702'N
Drop Point DP 61	106° 21.611'W	41° 52.893'N	Water Source	W-18	106° 25.34'W	41° 56.599'N
Drop Point DP 62	106° 24.729'W	41° 51.799'N	Water Source	W-19, Beaver Pond	106° 36.823'W	41° 0.87'N
Drop Point DP 63	106° 33.563'W	41° 51.738'N	Water Source	W-20, North Fork	106° 32.306'W	41° 1.524'N
Drop Point DP 80	106° 31.34'W	41° 51.97'N	Water Source	W-21, Pork Chop	106° 29.000'W	41° 04.239'N
Drop Point DP 81	106° 31.915'W	41° 5.033'N	Water Source	W-22, Indian	106° 04.444'W	41° 0.074'N
Drop Point DP 89	106° 29.734'W	41° 57.822'N	Safety Zone	S1	106° 29.734'W	41° 57.822'N
Repeater L1	106° 41.064'W	41° 1.737'N	Safety Zone	S2	106° 28.27'W	41° 58.342'N
Repeater BLM	106° 26.465'W	41° 54.386'N	Safety Zone	S3	106° 28.141'W	41° 56.205'N
Repeater CMD 12	106° 41.064'W	41° 1.737'N	Safety Zone	S4	106° 35.114'W	41° 53.629'N
Repeater CMD 13	106° 23.355'W	41° 0.4'N	Safety Zone	S5	106° 26.078'W	41° 56.439'N
Repeater TAC 15	106° 41'N	41° 1.737'N	Safety Zone	S6	106° 26.23'W	41° 56.156'N
Repeater Air Link	106° 41.064'W	41° 1.737'N	Safety Zone	S7	106° 26.168'W	41° 55.871'N
Repeater CMD 14	106° 21.919'W	41° 52.525'N	Safety Zone	S8	106° 23.774'W	41° 54.473'N
Staging Area	106° 24.033'W	41° 58.254'N	Safety Zone	S9	106° 26.376'W	41° 58.455'N

Legend

- Fire Polygon
- Completed Line
- Uncontrolled Fire Edge
- Utility Lines
- Camp
- Drop Point
- Fire Origin
- Helibase
- Helispot
- Safety Zone
- Staging Area
- Water Source
- Mobile Weather Unit (WX)
- Repeater
- Incident Command Post
- Initial Attack Area
- State Line
- Wilderness Boundary
- NOTAM FDC 6_2044
- Roads

Broadway and Beaver Creek Fires 5. TFR: Fire Map and Pilot (reduced) map should have TFR shown. FDC # 6/2044. Surface up to and incl 13,500 feet MSL. A/A FW 123.125 is contact freq. Region is Bounded by: 41°07'21"N 107°12'36"W 41°07'21"N 106°16'47"W 40°51'29"N 106°16'47"W 40°51'29"N 106°33'55"W 40°57'13"N 106°33'55"W 40°57'13"N 107°12'36"W

7. FREQUENCIES	AM	FM
A/A FW (Also TFR Freq)	123.125	
A/A RW	124.050	
AIR/GROUND PRIMARY		168.5625
AIR/GROUND SECONDARY		168.3750
DECK		163.1000