

Beaver Creek Fire
CO-RTF-000088
Broadway Fire
WY-MBF-000370
IRAWS Locations
09/17/16



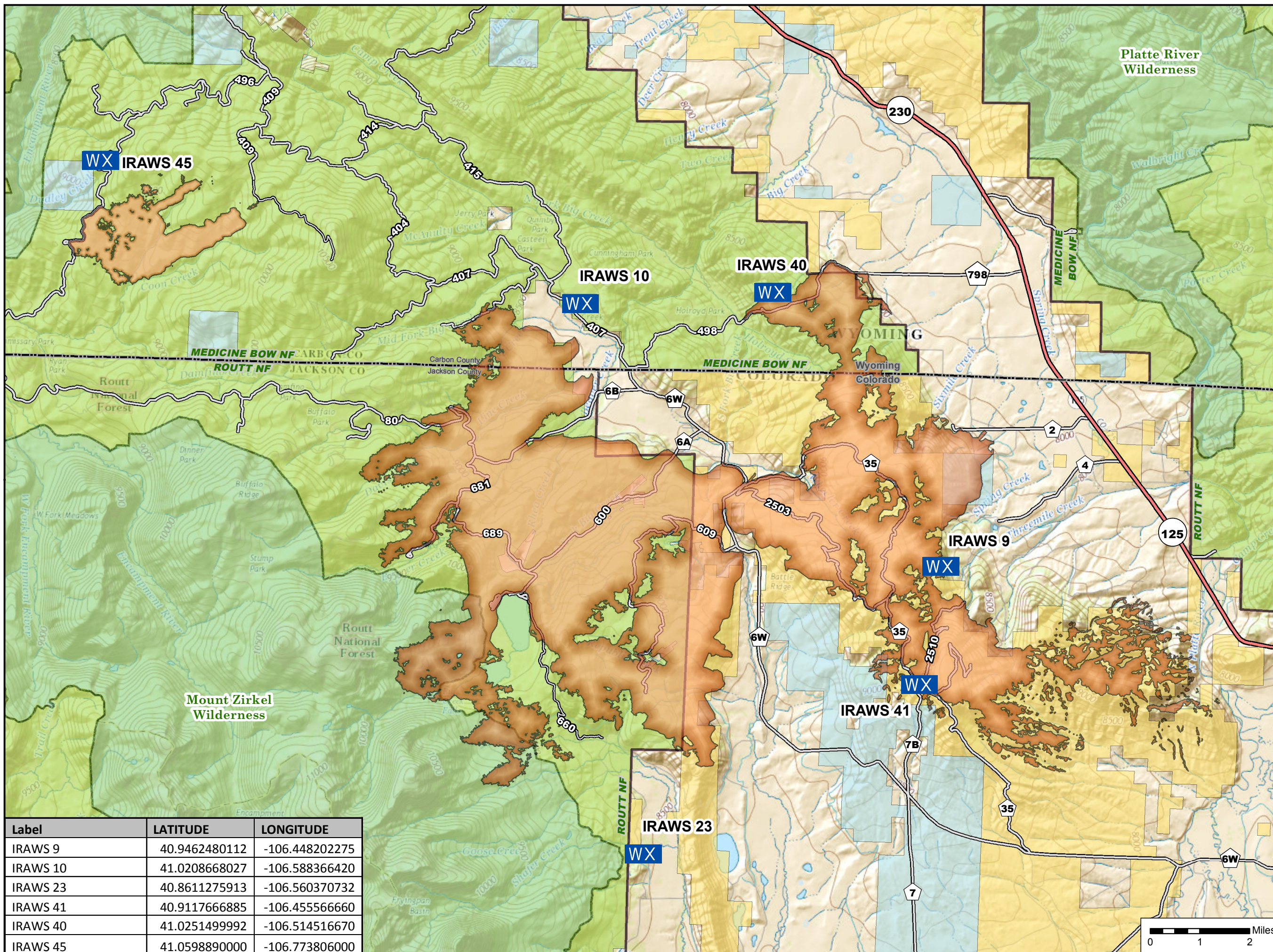
Datum: NAD83 UTM Zone: 12N
 Beaver Creek GIS
 9/17/2016 - 15:43 hrs

IRAWS Stations



Fire Perimeter

Ownership
 USFS
 BLM
 State
 Private



Label	LATITUDE	LONGITUDE
IRAWS 9	40.9462480112	-106.448202275
IRAWS 10	41.0208668027	-106.588366420
IRAWS 23	40.8611275913	-106.560370732
IRAWS 41	40.9117666885	-106.455566660
IRAWS 40	41.0251499992	-106.514516670
IRAWS 45	41.0598890000	-106.773806000



Alan Hester
 RAWS Field Group Supervisor
 NATIONAL INTERAGENCY FIRE CENTER
 3833 S. Development Ave.
 Boise, ID 83705
 Office: 208-387-5364
 Cell: 208-850-0648
 Fax: 208-387-5397
 ahester@blm.gov
BUREAU OF LAND MANAGEMENT