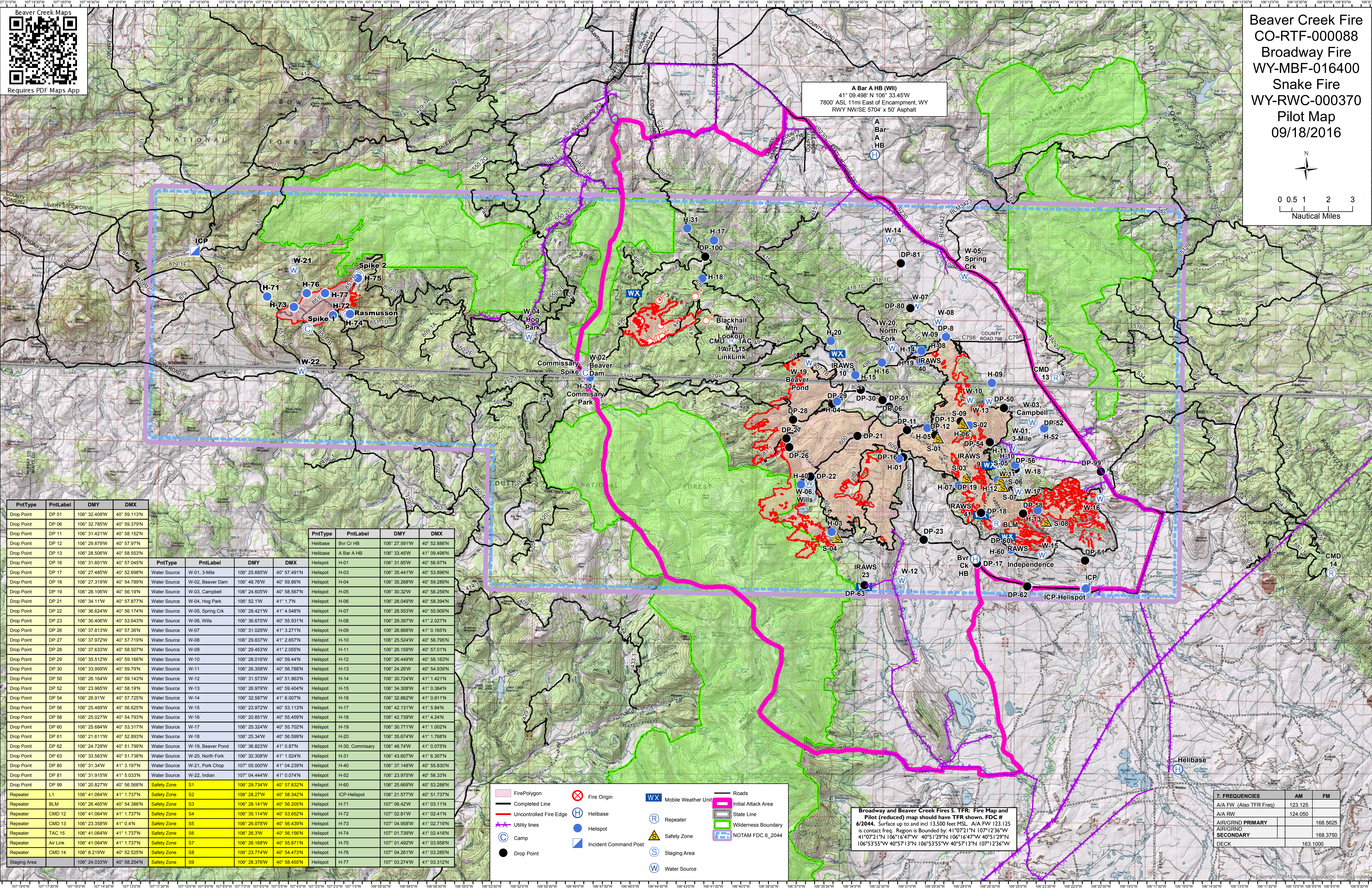
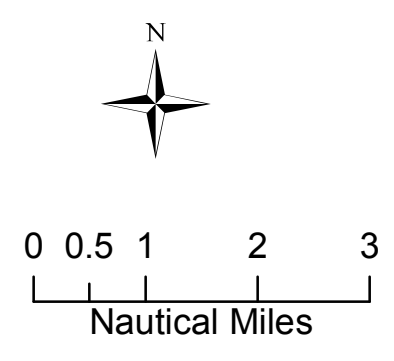




Requires PDF Maps App

Beaver Creek Fire
CO-RTF-00088
Broadway Fire
WY-MBF-016400
Snake Fire
WY-RWC-000370
Pilot Map
09/18/2016



| PntType | PntLabel | DMY | DMX |
|--------------|----------|---------------|--------------|
| Drop Point | DP 01 | 106° 32.409'W | 40° 59.113'N |
| Drop Point | DP 06 | 106° 32.785'W | 40° 59.379'N |
| Drop Point | DP 11 | 106° 31.421'W | 40° 58.152'N |
| Drop Point | DP 12 | 106° 29.879'W | 40° 57.97'N |
| Drop Point | DP 13 | 106° 28.506'W | 40° 58.553'N |
| Drop Point | DP 16 | 106° 31.601'W | 40° 57.045'N |
| Drop Point | DP 17 | 106° 27.485'W | 40° 52.698'N |
| Drop Point | DP 18 | 106° 27.319'W | 40° 54.789'N |
| Drop Point | DP 19 | 106° 28.106'W | 40° 56.19'N |
| Drop Point | DP 21 | 106° 34.11'W | 40° 57.877'N |
| Drop Point | DP 22 | 106° 36.624'W | 40° 56.174'N |
| Drop Point | DP 23 | 106° 30.406'W | 40° 53.643'N |
| Drop Point | DP 26 | 106° 37.813'W | 40° 57.36'N |
| Drop Point | DP 27 | 106° 37.972'W | 40° 57.719'N |
| Drop Point | DP 28 | 106° 37.633'W | 40° 58.507'N |
| Drop Point | DP 29 | 106° 35.512'W | 40° 59.166'N |
| Drop Point | DP 30 | 106° 33.959'W | 40° 59.79'N |
| Drop Point | DP 50 | 106° 26.164'W | 40° 59.143'N |
| Drop Point | DP 52 | 106° 23.965'W | 40° 58.19'N |
| Drop Point | DP 54 | 106° 26.91'W | 40° 57.725'N |
| Drop Point | DP 56 | 106° 25.489'W | 40° 56.625'N |
| Drop Point | DP 58 | 106° 25.027'W | 40° 54.793'N |
| Drop Point | DP 60 | 106° 25.684'W | 40° 53.317'N |
| Drop Point | DP 61 | 106° 21.611'W | 40° 52.893'N |
| Drop Point | DP 62 | 106° 24.729'W | 40° 51.799'N |
| Drop Point | DP 63 | 106° 33.563'W | 40° 51.738'N |
| Drop Point | DP 80 | 106° 31.344'W | 41° 3.197'N |
| Drop Point | DP 81 | 106° 31.915'W | 41° 5.033'N |
| Drop Point | DP 99 | 106° 20.827'W | 40° 56.568'N |
| Repeater | L1 | 106° 41.064'W | 41° 1.737'N |
| Repeater | BLM | 106° 26.465'W | 40° 54.386'N |
| Repeater | CMD 12 | 106° 41.064'W | 41° 1.737'N |
| Repeater | CMD 13 | 106° 23.358'W | 41° 0.4'N |
| Repeater | TAC 15 | 106° 41.064'W | 41° 1.737'N |
| Repeater | Air Link | 106° 41.064'W | 41° 1.737'N |
| Repeater | CMD 14 | 106° 8.219'W | 40° 52.525'N |
| Staging Area | | 106° 24.033'W | 40° 58.254'N |

| PntType | PntLabel | DMY | DMX |
|----------|------------------|---------------|--------------|
| Helibase | Bvr Cr HB | 106° 27.591'W | 40° 52.886'N |
| Helibase | A Bar A HB | 106° 33.45'W | 41° 09.498'N |
| Helispot | H-01 | 106° 31.85'W | 40° 56.97'N |
| Helispot | H-03 | 106° 35.441'W | 40° 53.896'N |
| Helispot | H-04 | 106° 35.268'W | 40° 59.289'N |
| Helispot | H-05 | 106° 30.32'W | 40° 58.259'N |
| Helispot | H-06 | 106° 28.049'W | 40° 58.394'N |
| Helispot | H-07 | 106° 28.553'W | 40° 55.909'N |
| Helispot | H-08 | 106° 29.397'W | 41° 2.027'N |
| Helispot | H-09 | 106° 28.868'W | 41° 0.165'N |
| Helispot | H-10 | 106° 25.524'W | 40° 56.795'N |
| Helispot | H-11 | 106° 26.159'W | 40° 57.01'N |
| Helispot | H-12 | 106° 26.449'W | 40° 56.163'N |
| Helispot | H-13 | 106° 24.26'W | 40° 54.939'N |
| Helispot | H-14 | 106° 30.724'W | 41° 1.421'N |
| Helispot | H-15 | 106° 34.308'W | 41° 0.384'N |
| Helispot | H-16 | 106° 32.862'W | 41° 0.911'N |
| Helispot | H-17 | 106° 42.131'W | 41° 5.84'N |
| Helispot | H-18 | 106° 42.739'W | 41° 4.24'N |
| Helispot | H-19 | 106° 30.771'W | 41° 1.002'N |
| Helispot | H-20 | 106° 35.674'W | 41° 1.768'N |
| Helispot | H-30, Commissary | 106° 48.74'W | 41° 0.075'N |
| Helispot | H-31 | 106° 43.807'W | 41° 6.307'N |
| Helispot | H-40 | 106° 37.148'W | 40° 55.830'N |
| Helispot | H-52 | 106° 23.975'W | 40° 58.33'N |
| Helispot | H-60 | 106° 25.669'W | 40° 53.288'N |
| Helispot | ICP-Helispot | 106° 21.577'W | 40° 51.737'N |
| Helispot | H-71 | 107° 06.42'W | 41° 03.11'N |
| Helispot | H-72 | 107° 02.81'W | 41° 02.41'N |
| Helispot | H-73 | 107° 04.958'W | 41° 02.719'N |
| Helispot | H-74 | 107° 01.739'W | 41° 02.418'N |
| Helispot | H-75 | 107° 01.492'W | 41° 03.958'N |
| Helispot | H-76 | 107° 04.261'W | 41° 03.285'N |
| Helispot | H-77 | 107° 03.274'W | 41° 03.312'N |

Legend

- Fire Polygon
- Completed Line
- Uncontrolled Fire Edge
- Utility lines
- Camp
- Drop Point
- Fire Origin
- Helibase
- Helispot
- Incident Command Post
- Mobile Weather Unit
- Repeater
- Safety Zone
- Staging Area
- Water Source
- Initial Attack Area
- State Line
- Wilderness Boundary
- NOTAM FDC 6_2044
- Roads

Broadway and Beaver Creek Fires 5. TFR: Fire Map and Pilot (reduced) map should have TFR shown. FDC # 6/2044. Surface up to and incl 13,500 feet MSL. A/A FW 123.125 is contact freq. Region is Bounded by: 41°07'21"N 107°12'36"W 41°07'21"N 106°16'47"W 40°51'29"N 106°16'47"W 40°51'29"N 106°53'55"W 40°57'13"N 106°53'55"W 40°57'13"N 107°12'36"W

| 7. FREQUENCIES | AM | FM |
|------------------------|---------|----------|
| A/A FW (Also TFR Freq) | 123.125 | |
| A/A RW | 124.050 | |
| AIR/GND PRIMARY | | 168.5625 |
| AIR/GND SECONDARY | | 168.3750 |
| DECK | | 163.1000 |