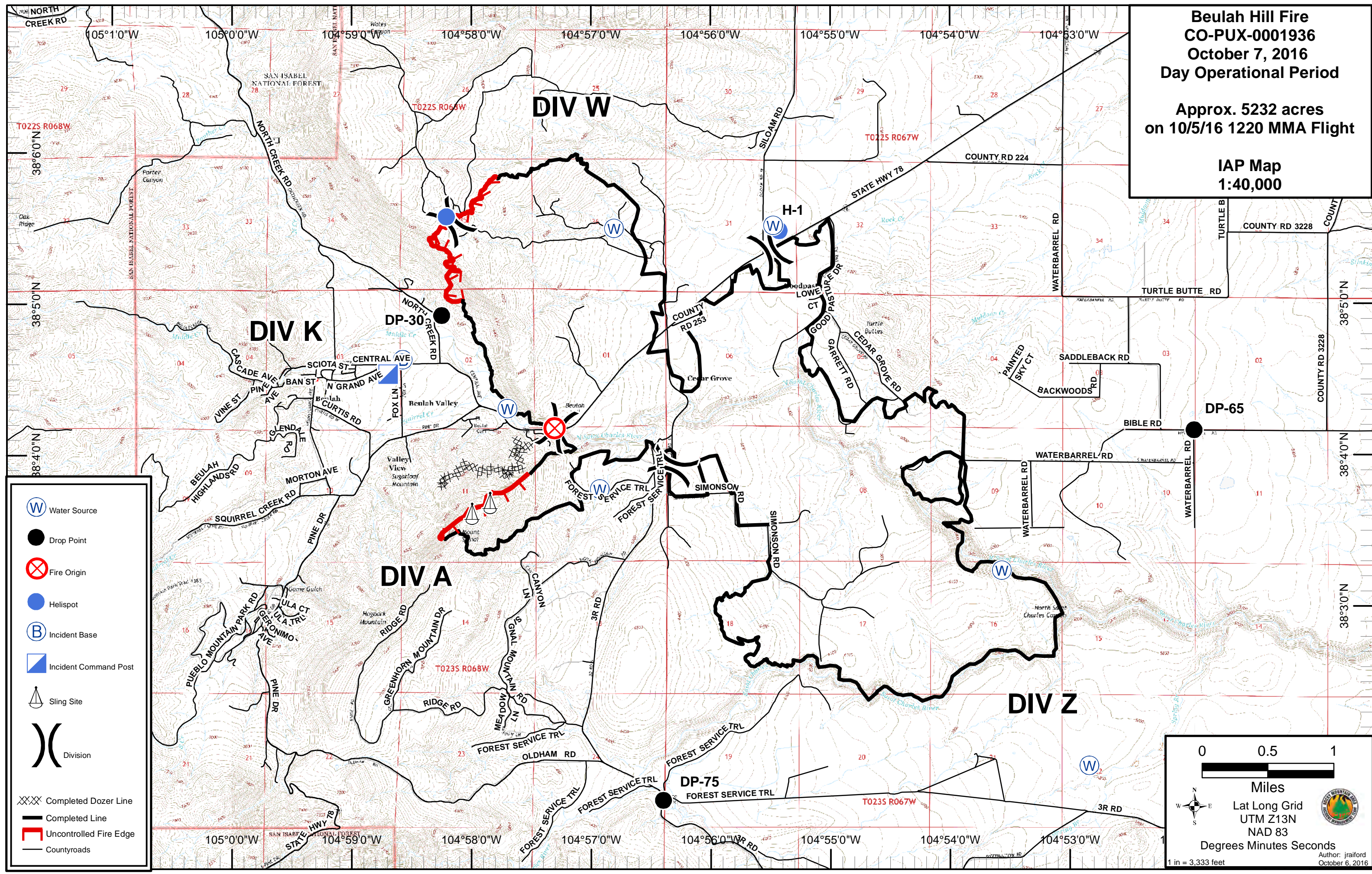


Beulah Hill Fire
CO-PUX-0001936
October 7, 2016
Day Operational Period

Approx. 5232 acres
on 10/5/16 1220 MMA Flight

IAP Map
1:40,000



- Water Source
- Drop Point
- Fire Origin
- Helispot
- Incident Base
- Incident Command Post
- Sling Site
- Division
- Completed Dozer Line
- Completed Line
- Uncontrolled Fire Edge
- Countyroads

0 0.5 1
Miles

Lat Long Grid
UTM Z13N
NAD 83
Degrees Minutes Seconds
1 in = 3,333 feet

Author: jraiford
October 6, 2016