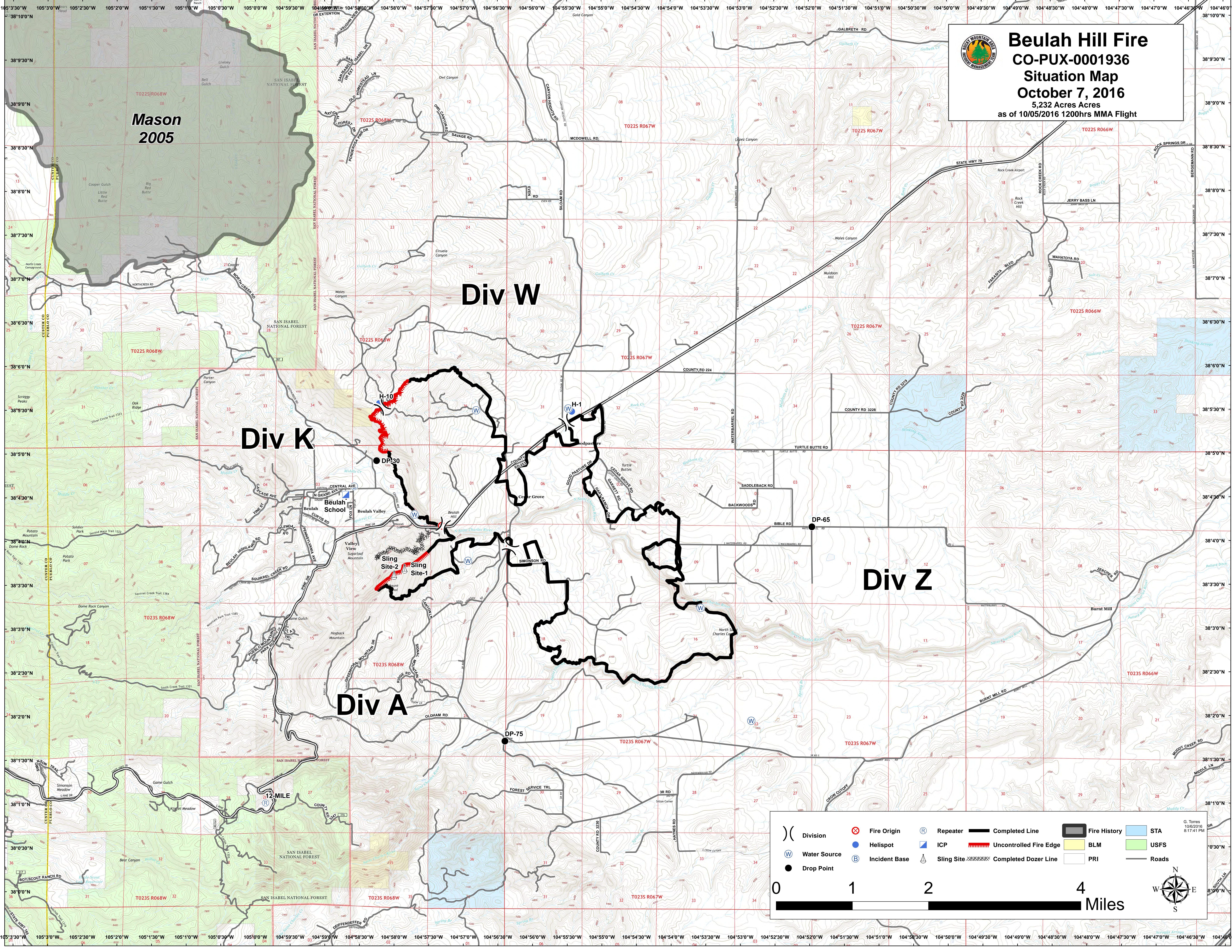




Beulah Hill Fire
CO-PUX-0001936
Situation Map
October 7, 2016
 5,232 Acres
 as of 10/05/2016 1200hrs MMA Flight

Mason
2005



	Division		Fire Origin		Repeater		Completed Line		Fire History		STA
	Water Source		Helispot		ICP		Uncontrolled Fire Edge		BLM		USFS
	Drop Point		Incident Base		Sling Site		Completed Dozer Line		PRI		Roads

0 1 2 4 Miles

G. Torres
10/6/2016
8:17:41 PM