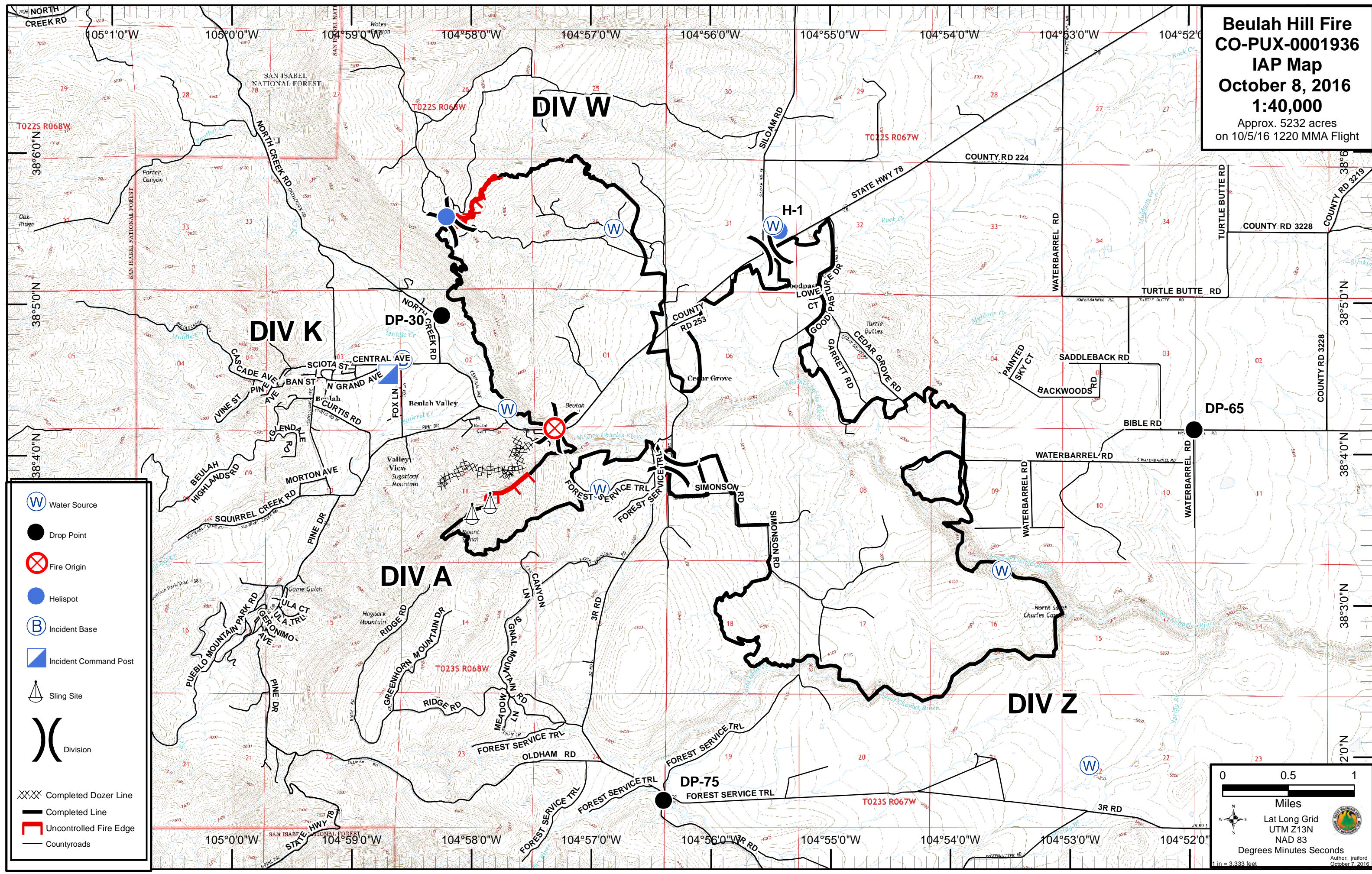


**Beulah Hill Fire**  
**CO-PUX-0001936**  
**IAP Map**  
**October 8, 2016**  
**1:40,000**  
 Approx. 5232 acres  
 on 10/5/16 1220 MMA Flight



- Water Source
- Drop Point
- Fire Origin
- Helispot
- Incident Base
- Incident Command Post
- Sling Site
- Division
- Completed Dozer Line
- Completed Line
- Uncontrolled Fire Edge
- Countyroads

0 0.5 1  
 Miles  
 Lat Long Grid  
 UTM Z13N  
 NAD 83  
 Degrees Minutes Seconds  
 1 in = 3,333 feet  
 Author: jraiford  
 October 7, 2016