

106°47'W 106°46.5'W 106°46'W 106°45.5'W 106°45'W 106°44.5'W 106°44'W 106°43.5'W

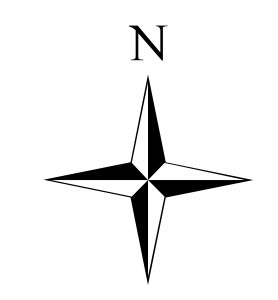
41°3.5'N
41°3'N
41°2.5'N
41°2'N

Broadway Fire

WY-MBF-016400

Briefing Map

246 IR acres 8/24/16 @ 1946

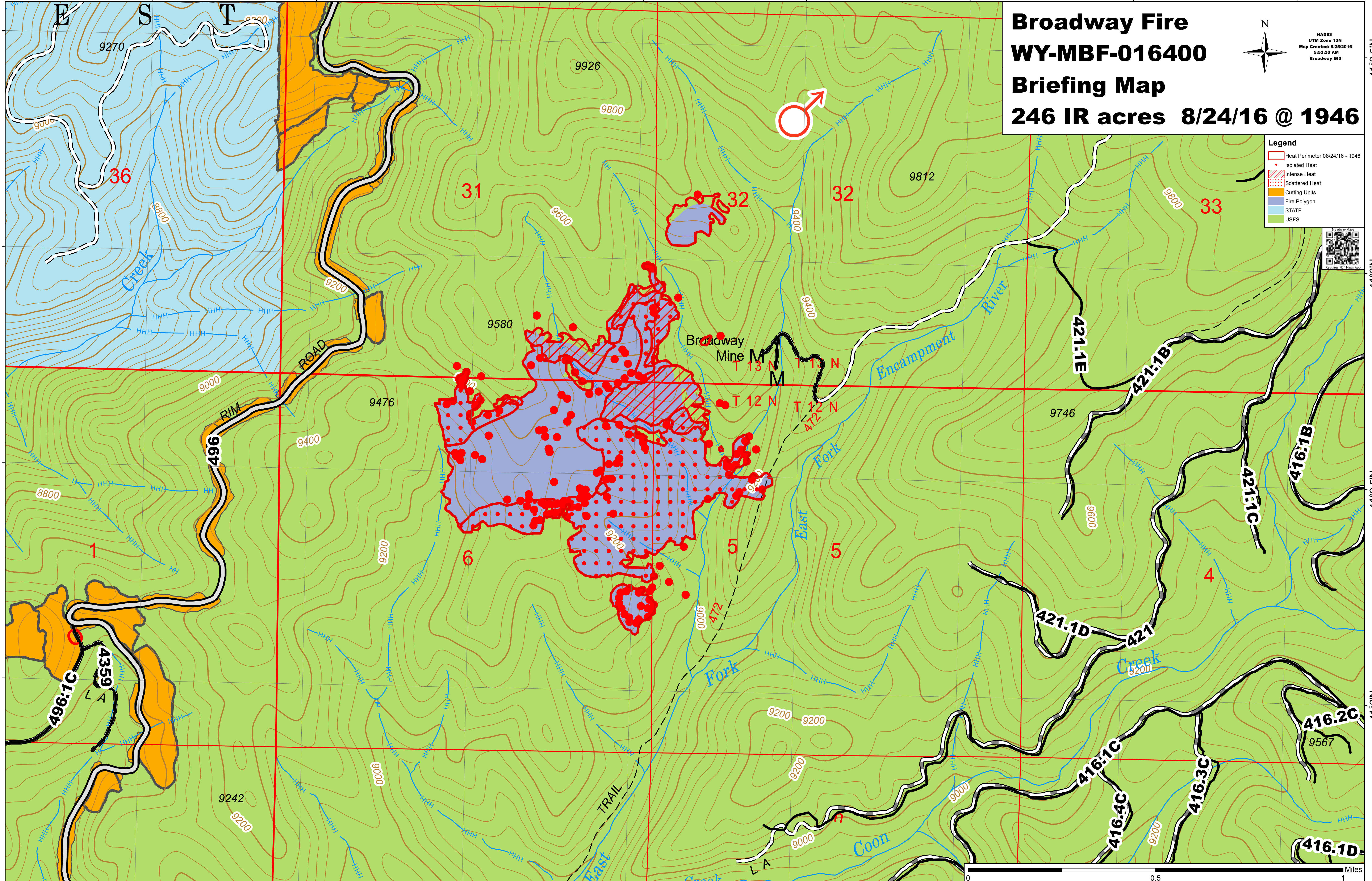


NAD83
UTM Zone 13N
Map Created: 8/25/2016
5:53:30 AM
Broadway GIS



Legend

- Heat Perimeter 08/24/16 - 1946
- Isolated Heat
- Intense Heat
- Scattered Heat
- Cutting Units
- Fire Polygon
- STATE
- USFS



106°47'W 106°46.5'W 106°46'W 106°45.5'W 106°45'W 106°44.5'W 106°44'W 106°43.5'W