

106°49.5'W 106°49'W 106°48.5'W 106°48'W 106°47.5'W 106°47'W 106°46.5'W 106°46'W 106°45.5'W 106°45'W 106°44.5'W 106°44'W 106°43.5'W 106°43'W 106°42.5'W 106°42'W 106°41.5'W

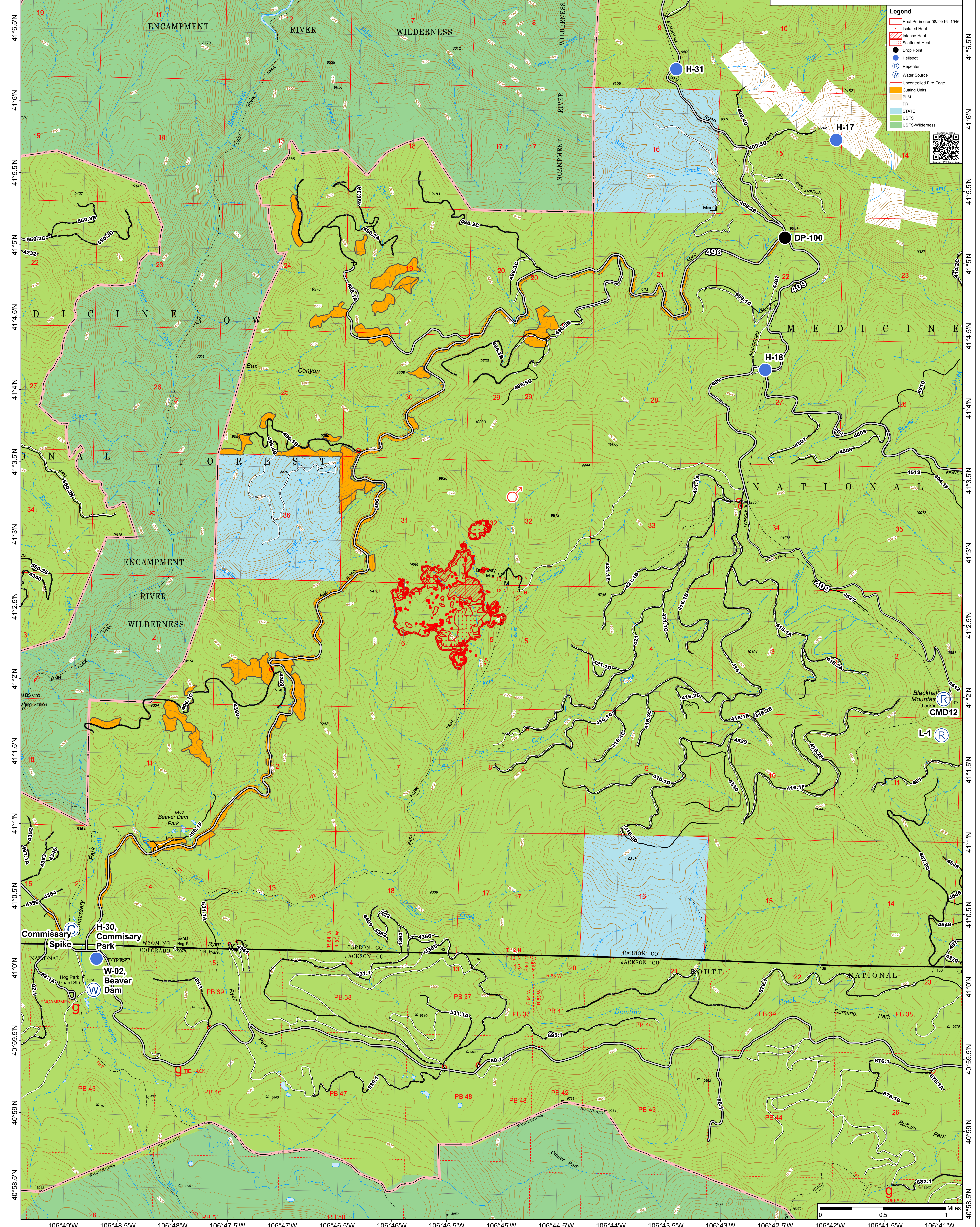
Note
ICP Helispot no longer to be listed as "H-31" due to Air Ops review. H-31 is north of Broadway Fire. Please inform others as needed.

Broadway Fire WY-MBF-016400 Operations Map 246 acres 8/28/16

NAD83
UTM Zone 13N
Map Created: 8/27/2016
7:57:10 PM
Broadway GIS

Legend

- Heat Perimeter 08/24/16 - 1946
- Isolated Heat
- Intense Heat
- Scattered Heat
- Drop Point
- Helispot
- Repeater
- Water Source
- Uncontrolled Fire Edge
- Cutting Units
- BLM
- PRI
- STATE
- USFS
- USFS-Wilderness



106°49'W 106°48.5'W 106°48'W 106°47.5'W 106°47'W 106°46.5'W 106°46'W 106°45.5'W 106°45'W 106°44.5'W 106°44'W 106°43.5'W 106°43'W 106°42.5'W 106°42'W 106°41.5'W 106°41'W

41°17'N 41°16.5'N 41°16'N 41°15.5'N 41°15'N 41°14.5'N 41°14'N 41°13.5'N 41°13'N 41°12.5'N 41°12'N 41°11.5'N 41°11'N 41°10.5'N 41°10'N 40°59.5'N 40°59'N 40°58.5'N 40°58'N