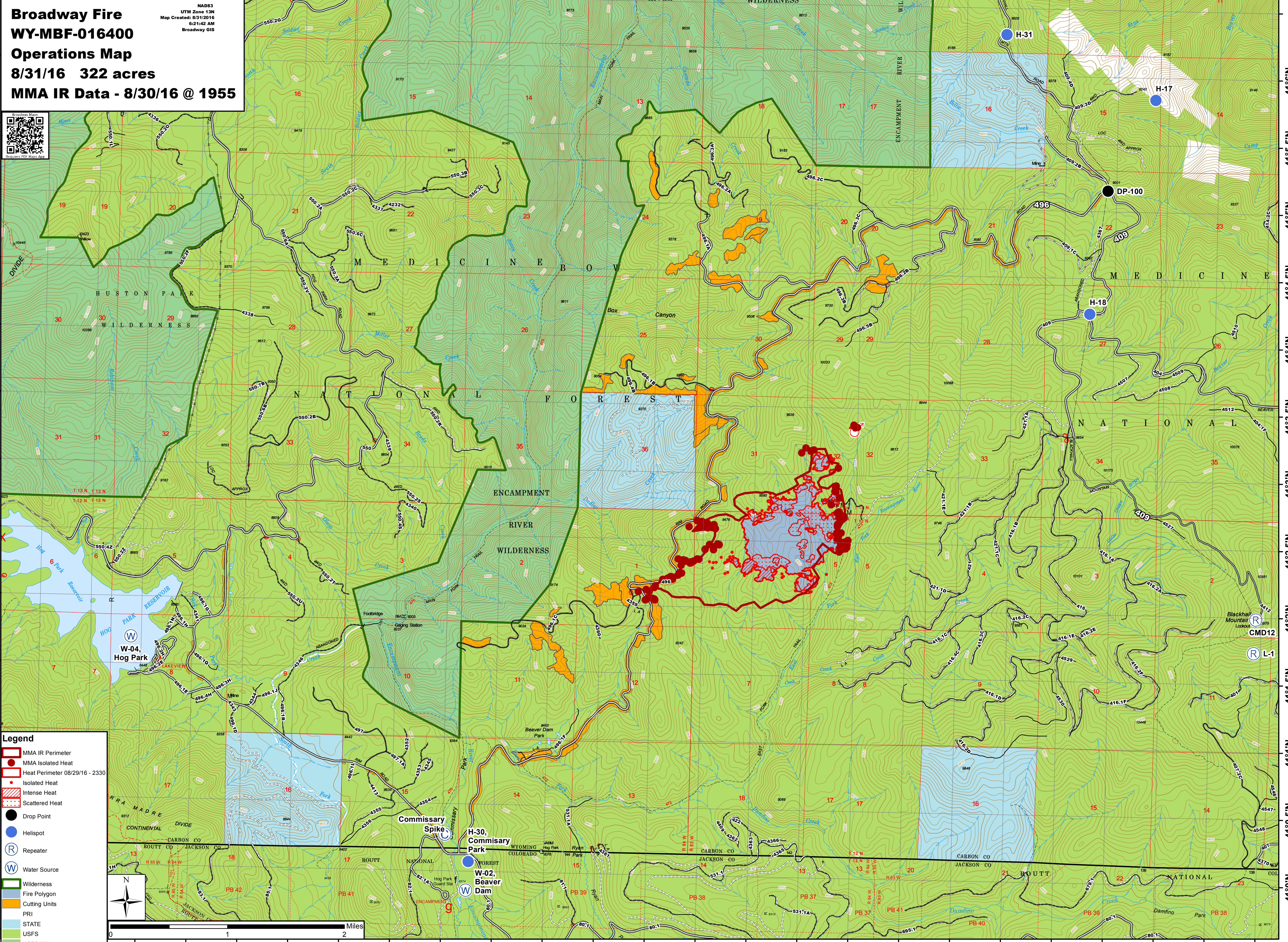


106°53.5'W 106°53'W 106°52.5'W 106°52'W 106°51.5'W 106°51'W 106°50.5'W 106°50'W 106°49.5'W 106°49'W 106°48.5'W 106°48'W 106°47.5'W 106°47'W 106°46.5'W 106°46'W 106°45.5'W 106°45'W 106°44.5'W 106°44'W 106°43.5'W 106°43'W 106°42.5'W 106°42'W 106°41.5'W 106°41'W

Broadway Fire
WY-MBF-016400
Operations Map
8/31/16 322 acres
MMA IR Data - 8/30/16 @ 1955



Legend

- MMA IR Perimeter
- MMA Isolated Heat
- Heat Perimeter 08/29/16 - 2330
- Isolated Heat
- Intense Heat
- Scattered Heat
- Drop Point
- Helispot
- Repeater
- Water Source
- Wilderness
- Fire Polygon
- Cutting Units
- PRI
- STATE
- USFS
- USFS-Wilderness



0 1 2 Miles

106°52'W 106°51.5'W 106°51'W 106°50.5'W 106°50'W 106°49.5'W 106°49'W 106°48.5'W 106°48'W 106°47.5'W 106°47'W 106°46.5'W 106°46'W 106°45.5'W 106°45'W 106°44.5'W 106°44'W 106°43.5'W 106°43'W 106°42.5'W 106°42'W 106°41.5'W 106°41'W

41°6'N 41°5.5'N 41°5'N 41°4.5'N 41°4'N 41°3.5'N 41°3'N 41°2.5'N 41°2'N 41°1.5'N 41°1'N 41°0.5'N 41°0'N