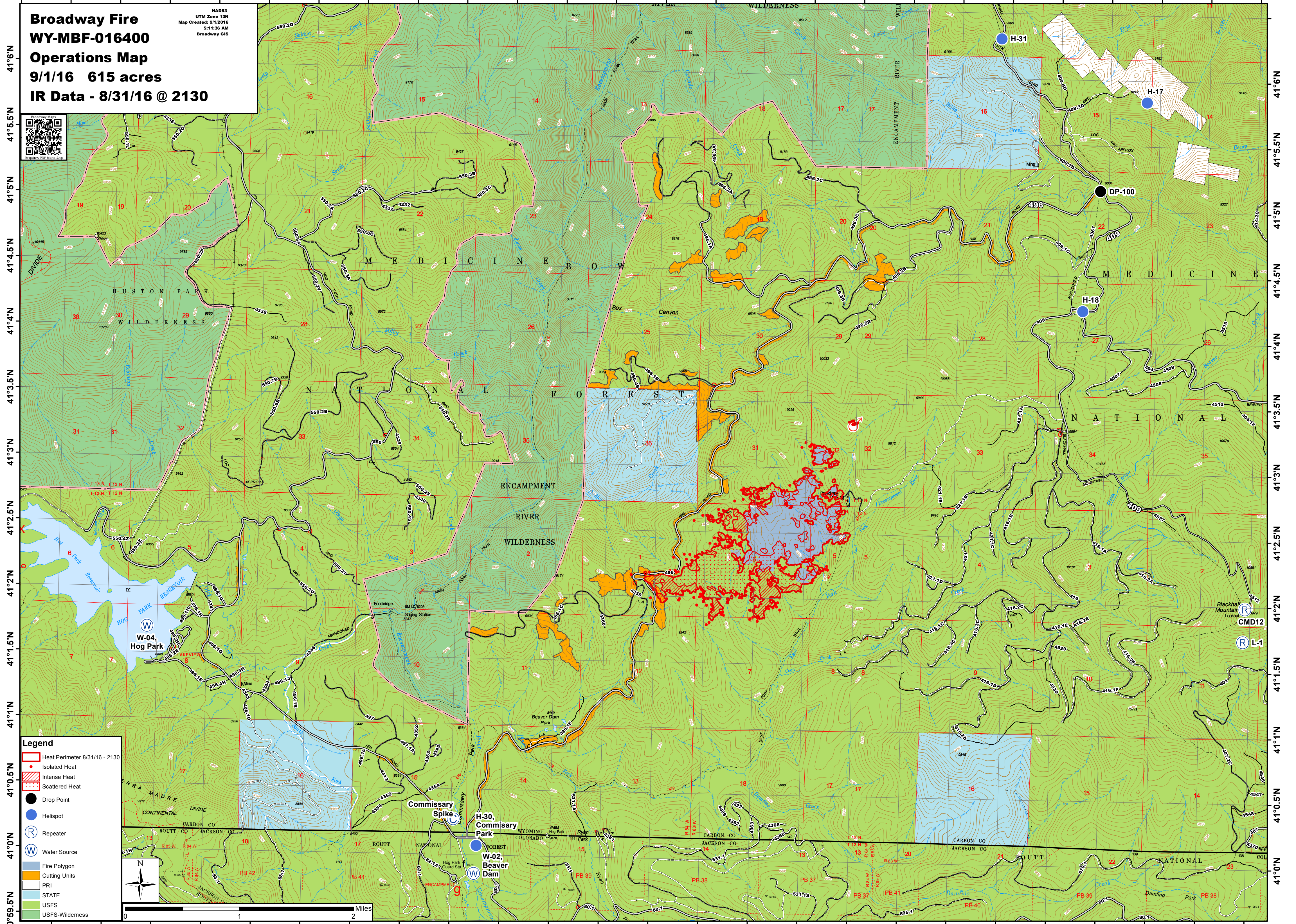


106°53.5'W 106°53'W 106°52.5'W 106°52'W 106°51.5'W 106°51'W 106°50.5'W 106°50'W 106°49.5'W 106°49'W 106°48.5'W 106°48'W 106°47.5'W 106°47'W 106°46.5'W 106°46'W 106°45.5'W 106°45'W 106°44.5'W 106°44'W 106°43.5'W 106°43'W 106°42.5'W 106°42'W 106°41.5'W 106°41'W

Broadway Fire
WY-MBF-016400
Operations Map
9/1/16 615 acres
IR Data - 8/31/16 @ 2130



NAD83
UTM Zone 13N
Map Created: 9/1/2016
5:11:36 AM
Broadway GIS



Legend

- Heat Perimeter 8/31/16 - 2130
- Isolated Heat
- Intense Heat
- Scattered Heat
- Drop Point
- Helispot
- Repeater
- Water Source
- Fire Polygon
- Cutting Units
- PRI
- STATE
- USFS
- USFS-Wilderness

0 1 2 Miles

106°53'W 106°52.5'W 106°52'W 106°51.5'W 106°51'W 106°50.5'W 106°50'W 106°49.5'W 106°49'W 106°48.5'W 106°48'W 106°47.5'W 106°47'W 106°46.5'W 106°46'W 106°45.5'W 106°45'W 106°44.5'W 106°44'W 106°43.5'W 106°43'W 106°42.5'W 106°42'W 106°41.5'W 106°41'W