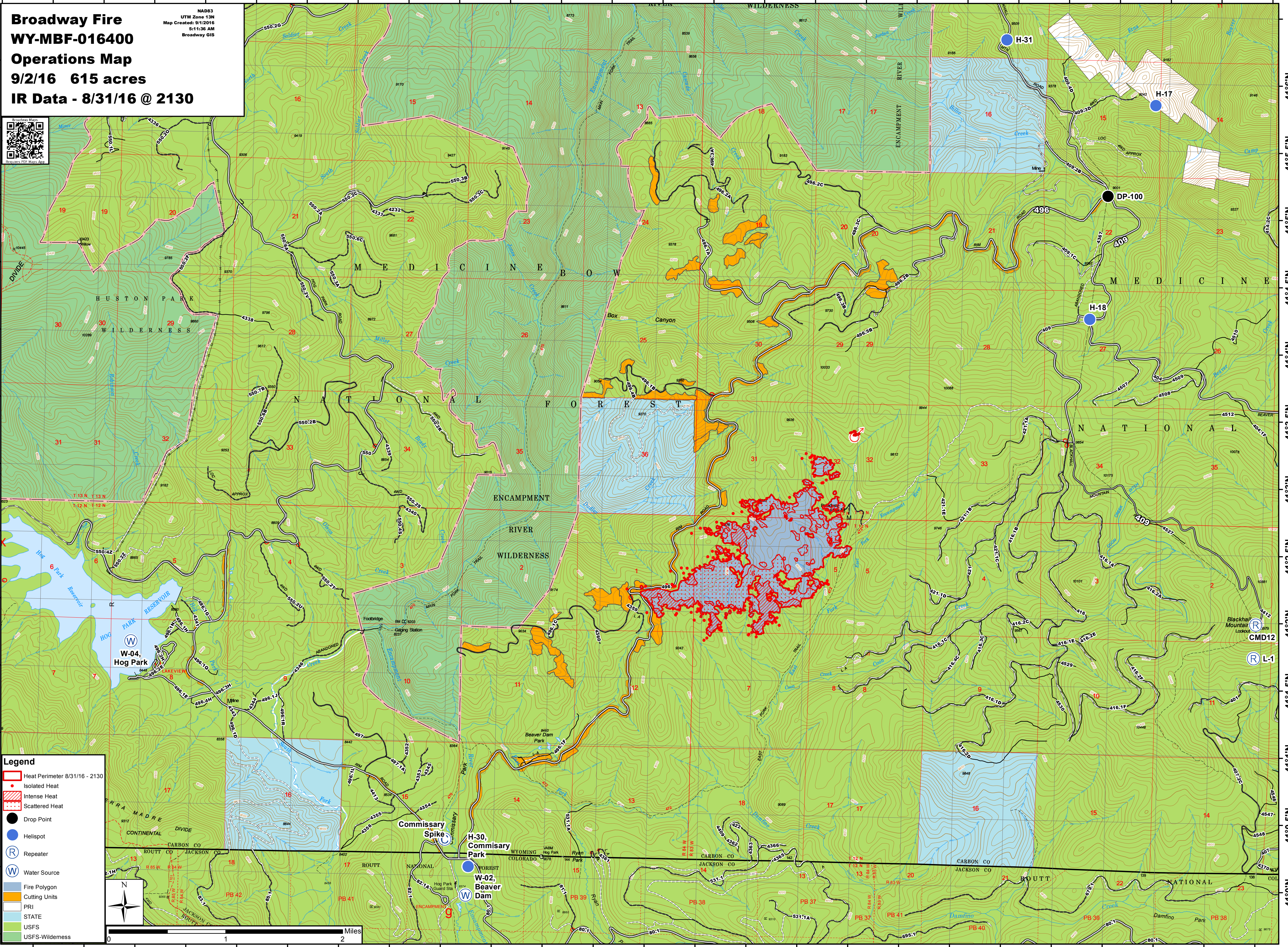


106°53.5'W 106°53'W 106°52.5'W 106°52'W 106°51.5'W 106°51'W 106°50.5'W 106°50'W 106°49.5'W 106°49'W 106°48.5'W 106°48'W 106°47.5'W 106°47'W 106°46.5'W 106°46'W 106°45.5'W 106°45'W 106°44.5'W 106°44'W 106°43.5'W 106°43'W 106°42.5'W 106°42'W 106°41.5'W 106°41'W

Broadway Fire
WY-MBF-016400
Operations Map
9/2/16 615 acres
IR Data - 8/31/16 @ 2130



Legend

- ▭ Heat Perimeter 8/31/16 - 2130
- Isolated Heat
- ▨ Intense Heat
- ▩ Scattered Heat
- Drop Point
- Helispot
- Ⓡ Repeater
- Ⓜ Water Source
- ▭ Fire Polygon
- ▭ PUI
- ▭ STATE
- ▭ USFS
- ▭ USFS-Wilderness

0 1 2 Miles

106°53'W 106°52.5'W 106°52'W 106°51.5'W 106°51'W 106°50.5'W 106°50'W 106°49.5'W 106°49'W 106°48.5'W 106°48'W 106°47.5'W 106°47'W 106°46.5'W 106°46'W 106°45.5'W 106°45'W 106°44.5'W 106°44'W 106°43.5'W 106°43'W 106°42.5'W 106°42'W 106°41.5'W 106°41'W