

106°48.5'W 106°48'W 106°47.5'W 106°47'W 106°46.5'W 106°46'W 106°45.5'W 106°45'W 106°44.5'W 106°44'W

41°3.5'N
41°3'N
41°2.5'N
41°2'N
41°1.5'N

41°3.5'N
41°3'N
41°2.5'N
41°2'N
41°1.5'N

Broadway Fire

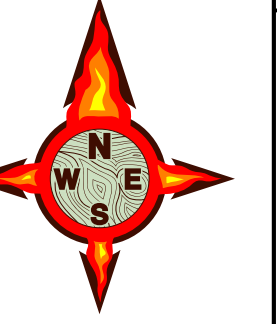
WY-MBF-16400

Briefing Map

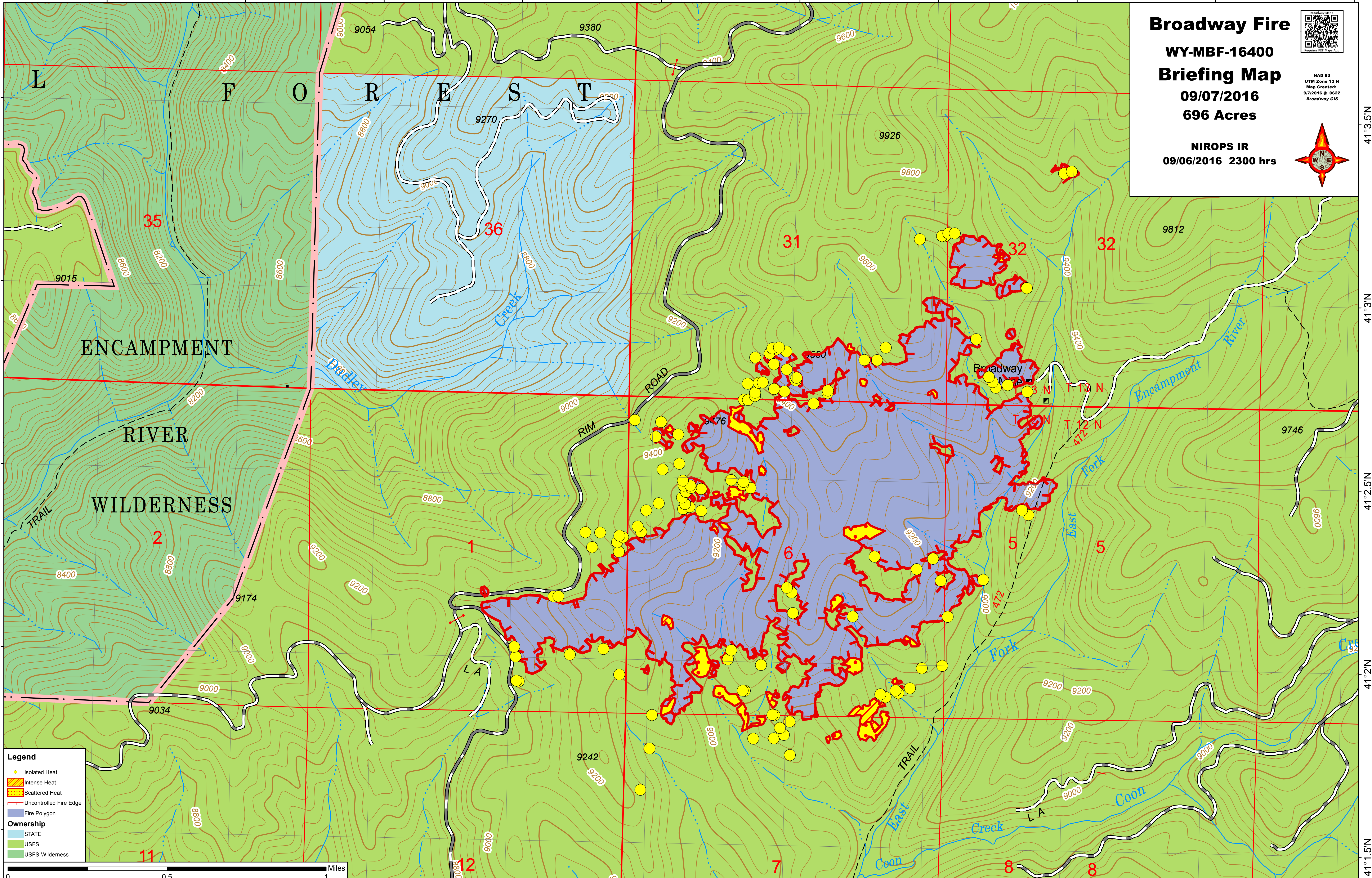
09/07/2016
696 Acres



NAD 83
UTM Zone 13 N
Map Created:
9/7/2016 @ 0622
Broadway GIS



NIROPS IR
09/06/2016 2300 hrs

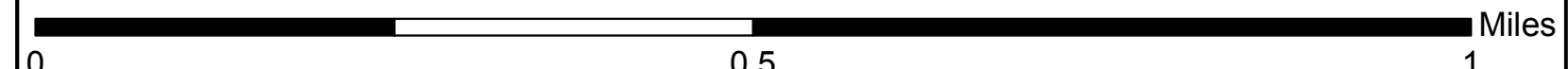


Legend

- Isolated Heat
- Intense Heat
- Scattered Heat
- Uncontrolled Fire Edge
- Fire Polygon

Ownership

- STATE
- USFS
- USFS-Wilderness



106°48.5'W 106°48'W 106°47.5'W 106°47'W 106°46.5'W 106°46'W 106°45.5'W 106°45'W 106°44.5'W 106°44'W