

106°48.5'W 106°48'W 106°47.5'W 106°47'W 106°46.5'W 106°46'W 106°45.5'W 106°45'W 106°44.5'W 106°44'W

41°3.5'N 41°3'N 41°2.5'N 41°2'N 41°1.5'N

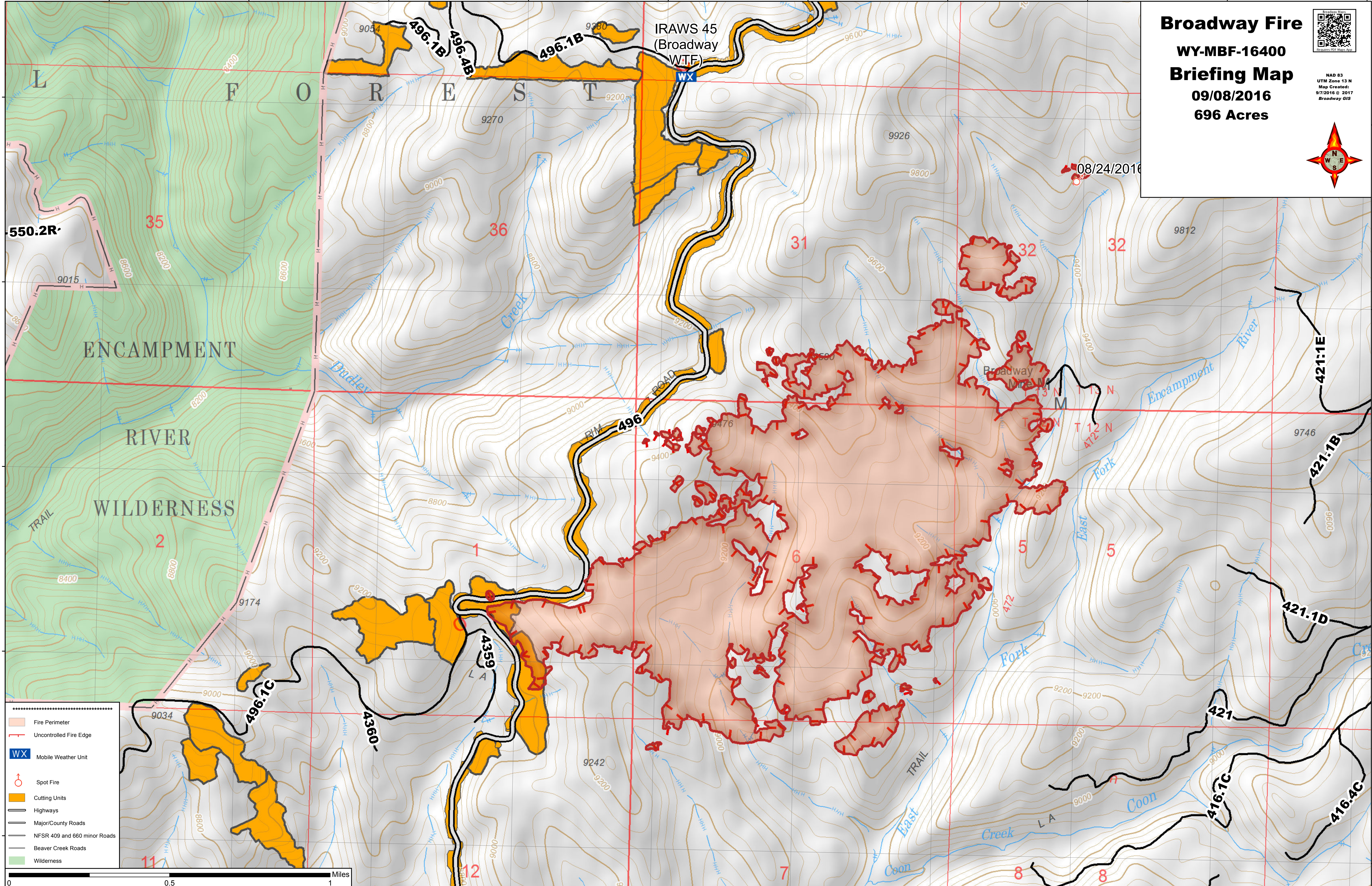
Broadway Fire
WY-MBF-16400
Briefing Map
09/08/2016
696 Acres



NAD 83
UTM Zone 13 N
Map Created:
9/7/2016 @ 2017
Broadway GIS



08/24/2016



- Fire Perimeter
- Uncontrolled Fire Edge
- Mobile Weather Unit
- Spot Fire
- Cutting Units
- Highways
- Major/County Roads
- NFSR 409 and 660 minor Roads
- Beaver Creek Roads
- Wilderness



106°48.5'W 106°48'W 106°47.5'W 106°47'W 106°46.5'W 106°46'W 106°45.5'W 106°45'W 106°44.5'W 106°44'W