


106°48.5'W 106°48'W 106°47.5'W 106°47'W 106°46.5'W 106°46'W 106°45.5'W 106°45'W 106°44.5'W 106°44'W


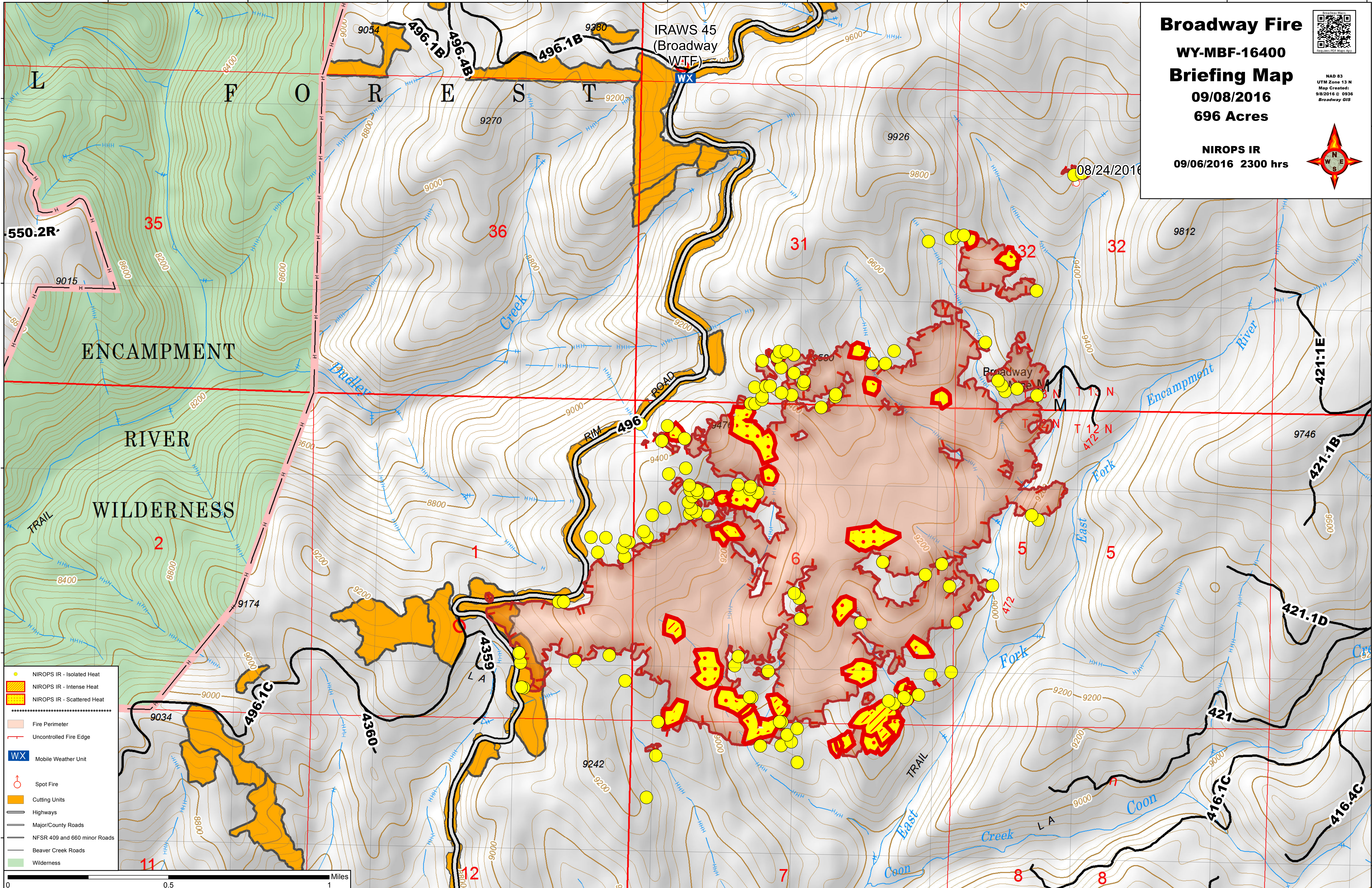
41°3.5'N  
41°3'N  
41°2.5'N  
41°2'N  
41°1.5'N

**Broadway Fire**  
**WY-MBF-16400**  
**Briefing Map**  
**09/08/2016**  
**696 Acres**

**NIROPS IR**  
**09/06/2016 2300 hrs**



NAD 83  
 UTM Zone 13 N  
 Map Created:  
 8/22/2016 9:59 AM  
 Broadway GIS

- NIROPS IR - Isolated Heat
- NIROPS IR - Intense Heat
- NIROPS IR - Scattered Heat
- Fire Perimeter
- Uncontrolled Fire Edge
- Mobile Weather Unit
- Spot Fire
- Cutting Units
- Highways
- Major/County Roads
- NFSR 409 and 660 minor Roads
- Beaver Creek Roads
- Wilderness

0 0.5 1 Miles

106°48.5'W 106°48'W 106°47.5'W 106°47'W 106°46.5'W 106°46'W 106°45.5'W 106°45'W 106°44.5'W 106°44'W