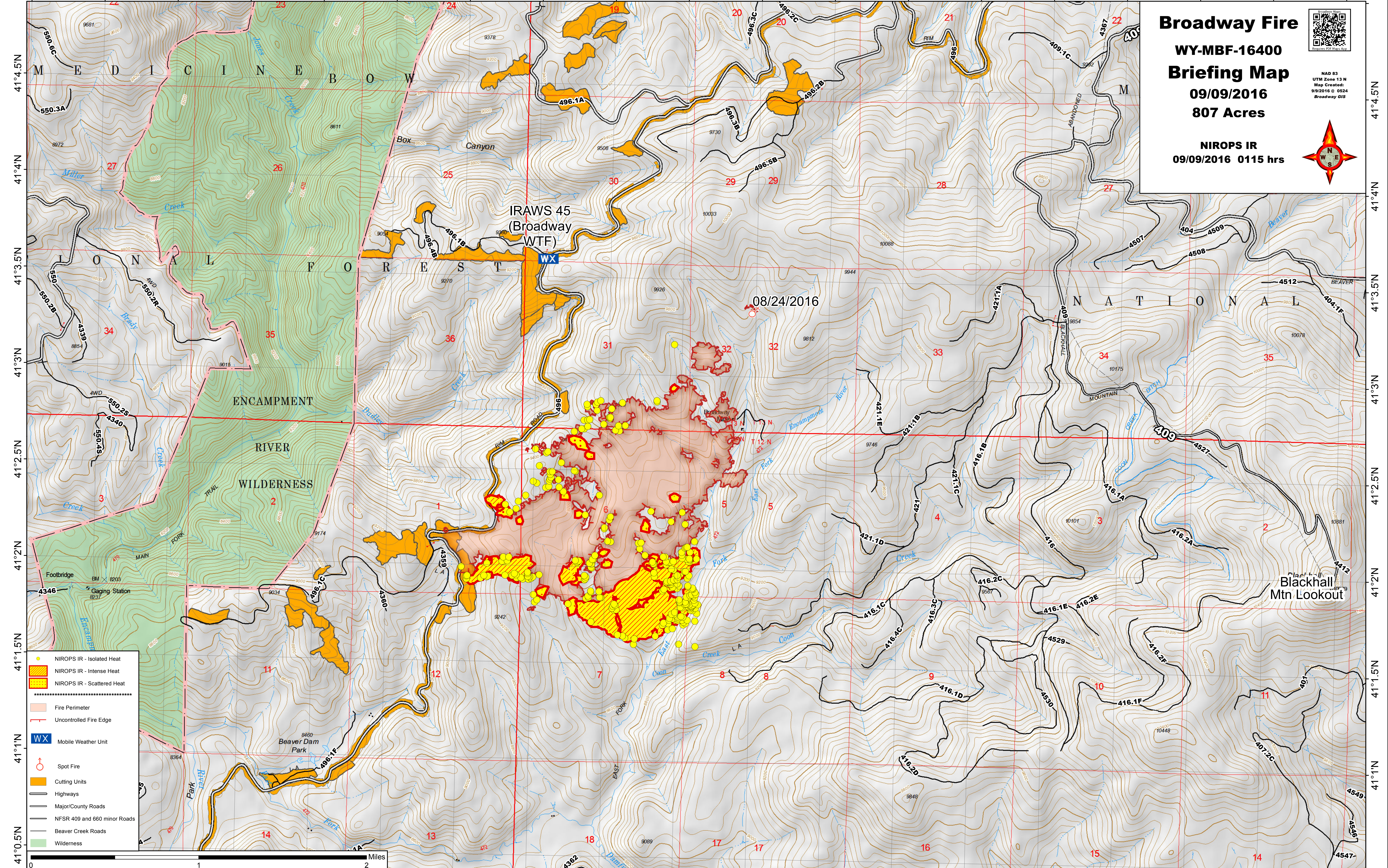


106°50'W 106°49.5'W 106°49'W 106°48.5'W 106°48'W 106°47.5'W 106°47'W 106°46.5'W 106°46'W 106°45.5'W 106°45'W 106°44.5'W 106°44'W 106°43.5'W 106°43'W 106°42.5'W 106°42'W 106°41.5'W 106°41'W



Broadway Fire
WY-MBF-16400
Briefing Map
09/09/2016
807 Acres

NIROPS IR
09/09/2016 0115 hrs

NAD 83
 UTM Zone 13 N
 Map Created:
 9/9/2016 @ 0824
 Broadway GIS

- NIROPS IR - Isolated Heat
- NIROPS IR - Intense Heat
- NIROPS IR - Scattered Heat
- Fire Perimeter
- Uncontrolled Fire Edge
- Mobile Weather Unit
- Spot Fire
- Cutting Units
- Highways
- Major/County Roads
- NFSR 409 and 660 minor Roads
- Beaver Creek Roads
- Wilderness

0 1 2 Miles
106°49.5'W 106°49'W 106°48.5'W 106°48'W 106°47.5'W 106°47'W 106°46.5'W 106°46'W 106°45.5'W 106°45'W 106°44.5'W 106°44'W 106°43.5'W 106°43'W 106°42.5'W 106°42'W 106°41.5'W 106°41'W

41°4.5'N
41°4'N
41°3.5'N
41°3'N
41°2.5'N
41°2'N
41°1.5'N
41°1'N
41°0.5'N

41°4.5'N
41°4'N
41°3.5'N
41°3'N
41°2.5'N
41°2'N
41°1.5'N
41°1'N
41°0.5'N