

Broadway Fire

WY-MBF-16400

Ops Map

09/11/2016

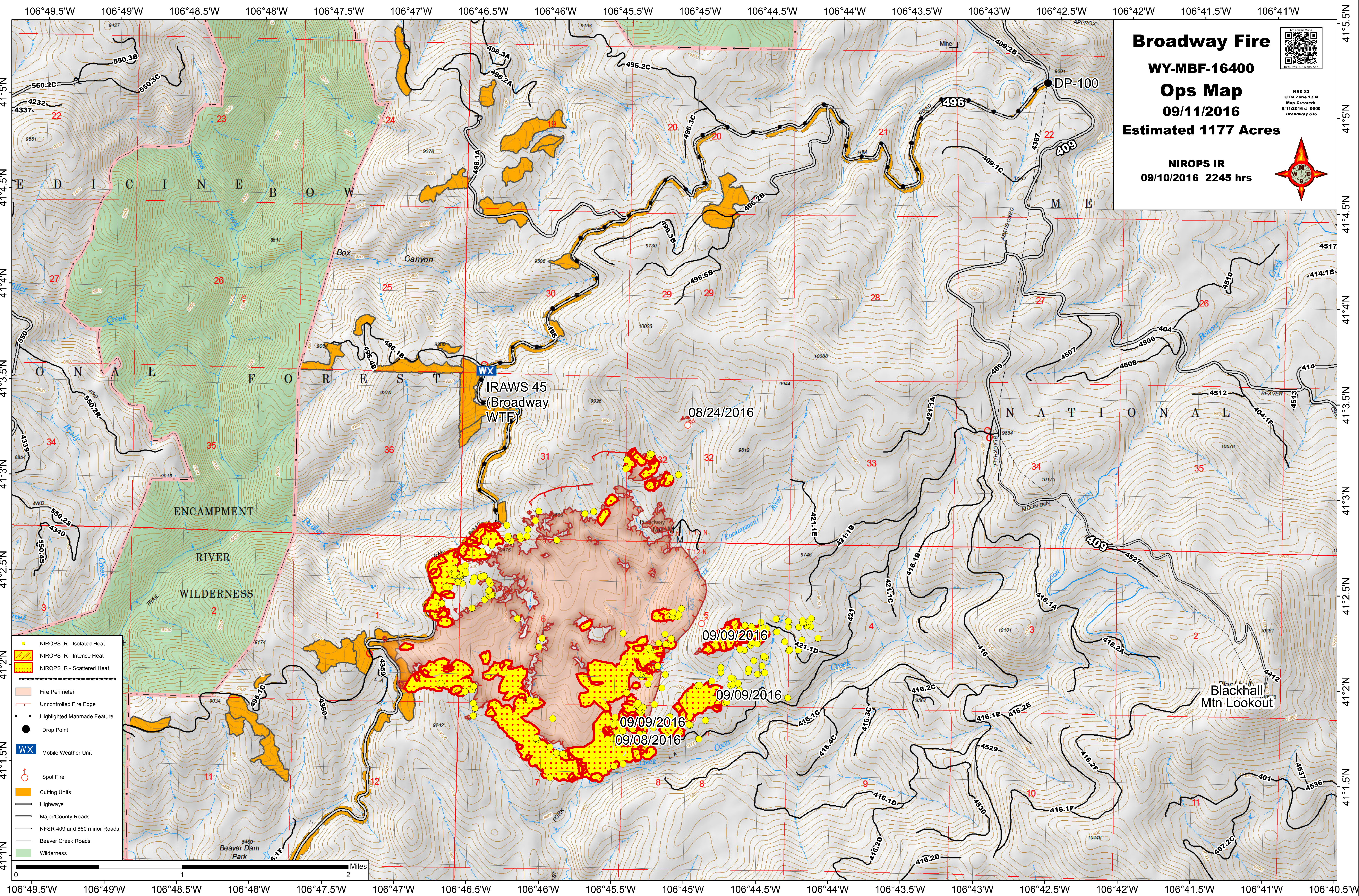
Estimated 1177 Acres



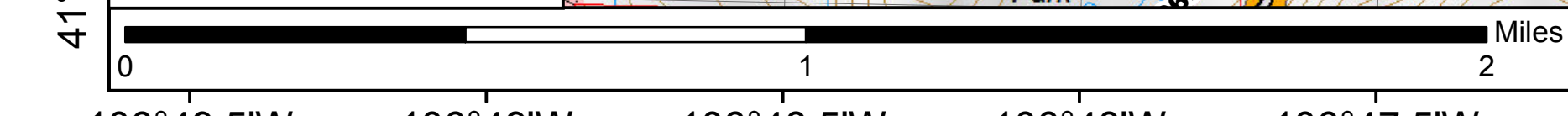
NAD 83
UTM Zone 13 N
Map Created
9/11/2016 @ 0800
Broadway GIS



NIROPS IR
09/10/2016 2245 hrs



- NIROPS IR - Isolated Heat
- NIROPS IR - Intense Heat
- NIROPS IR - Scattered Heat
- Fire Perimeter
- Uncontrolled Fire Edge
- Highlighted Manmade Feature
- Drop Point
- Mobile Weather Unit
- Spot Fire
- Cutting Units
- Highways
- Major/County Roads
- NFSR 409 and 660 minor Roads
- Beaver Creek Roads
- Wilderness



Blackhall Mtn Lookout