

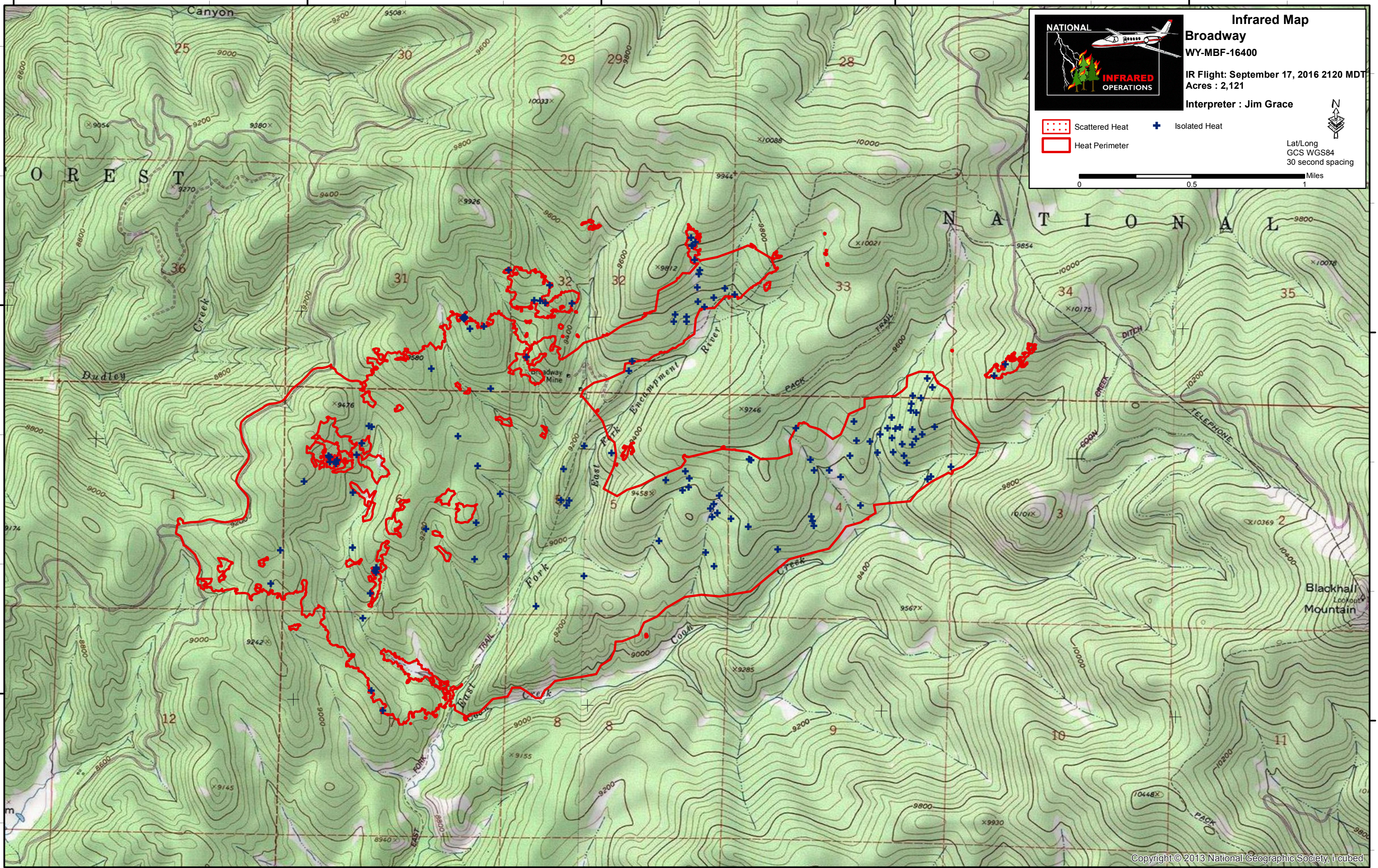
106°48'0"W 106°46'30"W 106°45'0"W 106°43'30"W 106°42'0"W

41°3'0"N

41°13'0"N

41°3'0"N

41°13'0"N



NATIONAL

INFRARED OPERATIONS

Infrared Map
Broadway
 WY-MBF-16400
 IR Flight: September 17, 2016 2120 MDT
 Acres : 2,121
 Interpreter : Jim Grace

Scattered Heat Isolated Heat
 Heat Perimeter

Lat/Long
 GCS WGS84
 30 second spacing
 0 0.5 1 Miles