

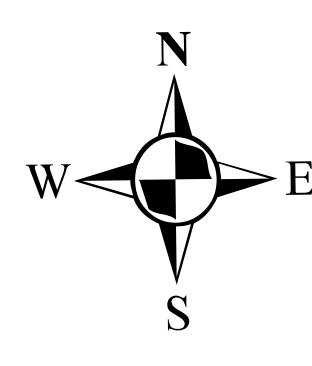
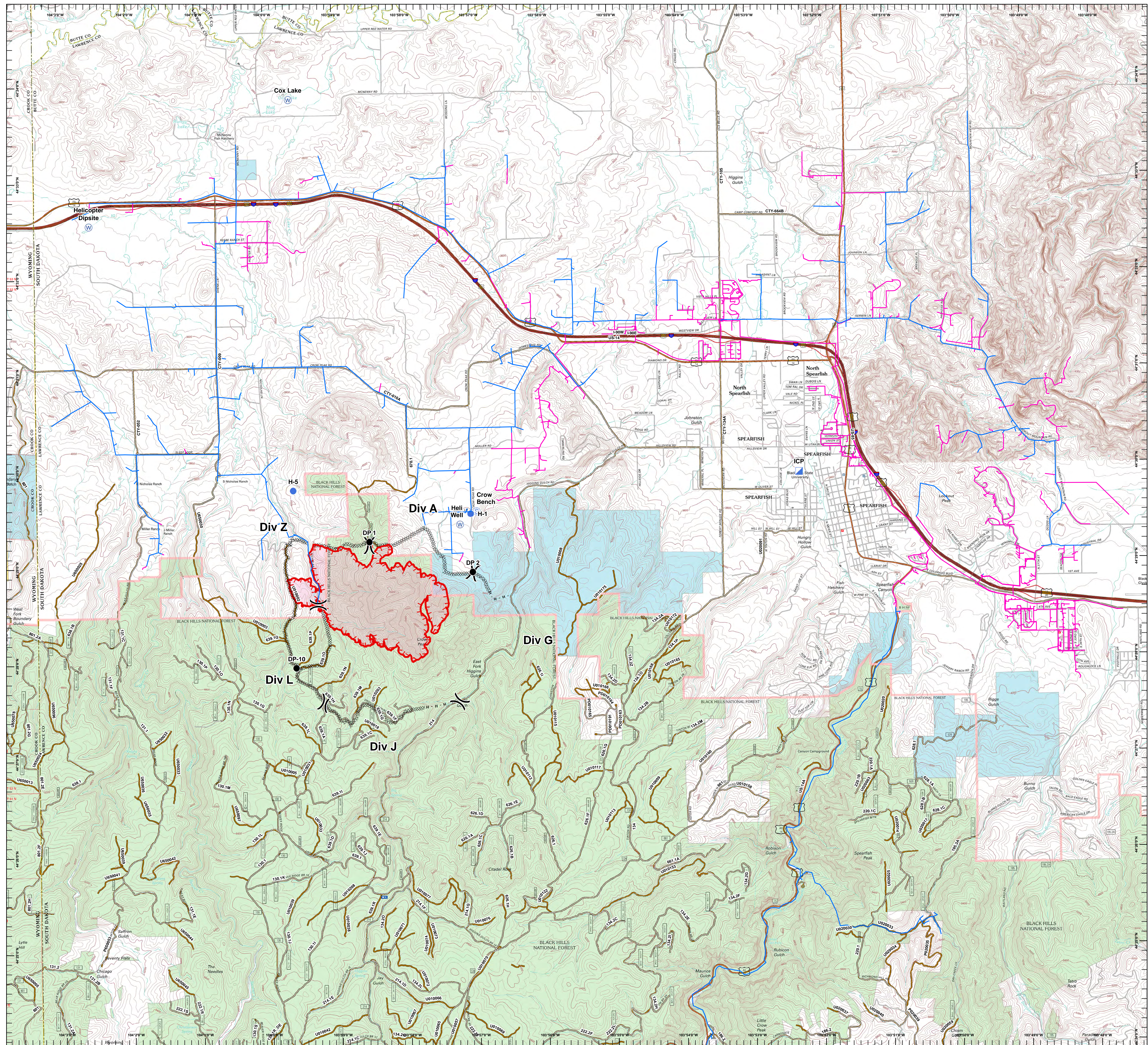
# Crow Peak Fire

## SD-BKF-160370

### June 29, 2016

Rushmore Electric Power Cooperative  
Powerlines

- Overhead Lines
- Under Ground Lines
- Drop Point
- Helibase
- Helispot
- Incident Command Post
- Mobile Weather Unit
- Staging Area
- Water Source
- Division
- Uncontrolled Fire Edge
- Completed Dozer Line
- Hand Line
- usfs\_roads\_all
- BLM
- PRIVATE
- STATE
- USFS



0 0.5 1  
Miles

G. Torres  
Jun 28, 2016  
1812 hrs