

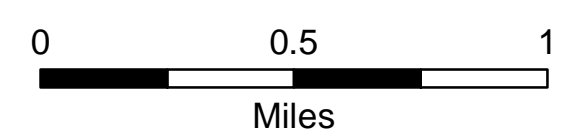
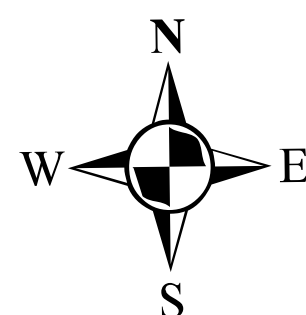
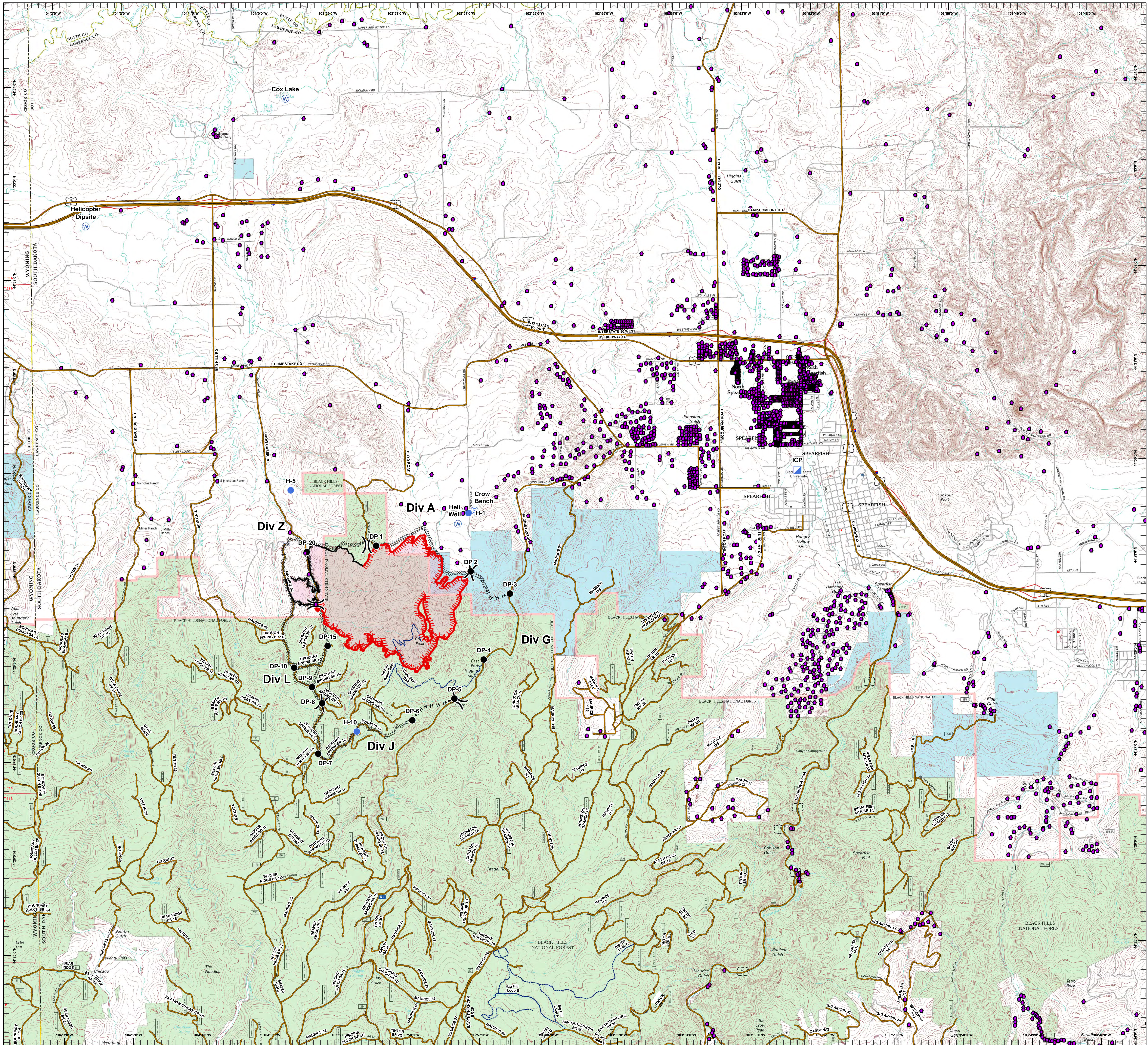
Crow Peak Fire

SD-BKF-160370

June 30, 2016

Operations Map

- Drop Point
- ⊕ Helibase
- Helispot
- ▣ ICP
- ☒ Mobile Weather Unit
- ⊙ Staging Area
- ⊕ Water Source
-) (Division
- Completed Dozer Line
- ||||| Hand Line
- Completed Line
- ▬ Uncontrolled Fire Edge
- Roads
- ⋯ Trail
- BLM
- PRIVATE
- STATE
- USFS



G. Torres
Jun 30, 2016
0506 hrs