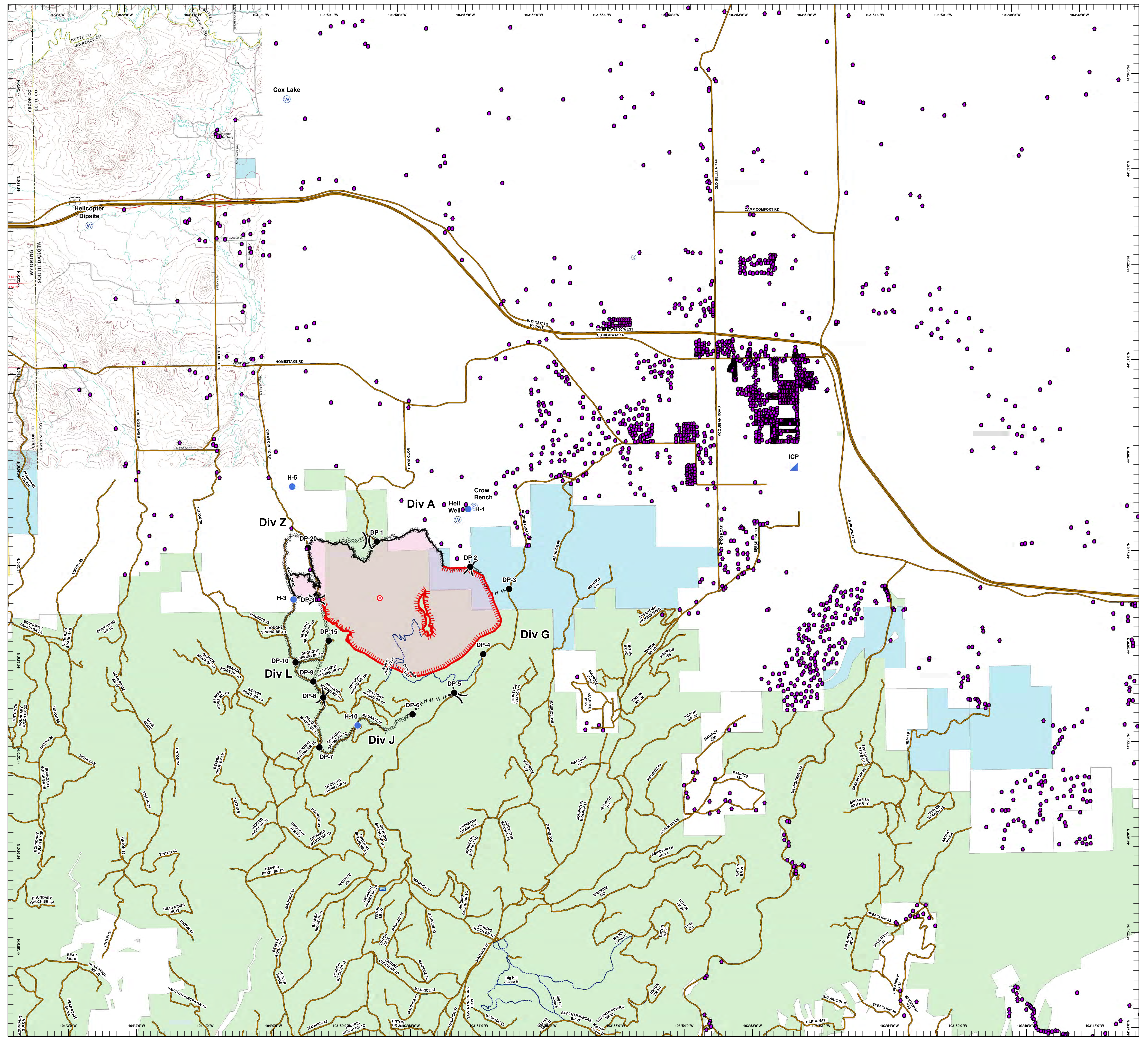


Crow Peak Fire SD-BKF-160370 July 1, 2016

- Drop Point
- ⊕ Operations Map
- ⊕ Helibase
- Helispot
- ▣ ICP
- ☒ Mobile Weather Unit
- Fire Origin
- ⊙ Repeater
- ⊙ Staging Area
- ⊙ Water Source
-) (Division
- Completed Dozer Line
- ||||| Hand Line
- Completed Line
- ▬ Uncontrolled Fire Edge
- Roads
- Trail
- BLM
- PRIVATE
- STATE
- USFS

Uncontrolled Fire Perimeter - ESTIMATED, as of 1700 hrs, June 30, 2016



Rocky Mountain Tree
RURAL MANAGEMENT TEAM

N
E
S
W

0 0.5 1
Miles

G. Torres
Jun 30, 2016
2324 hrs