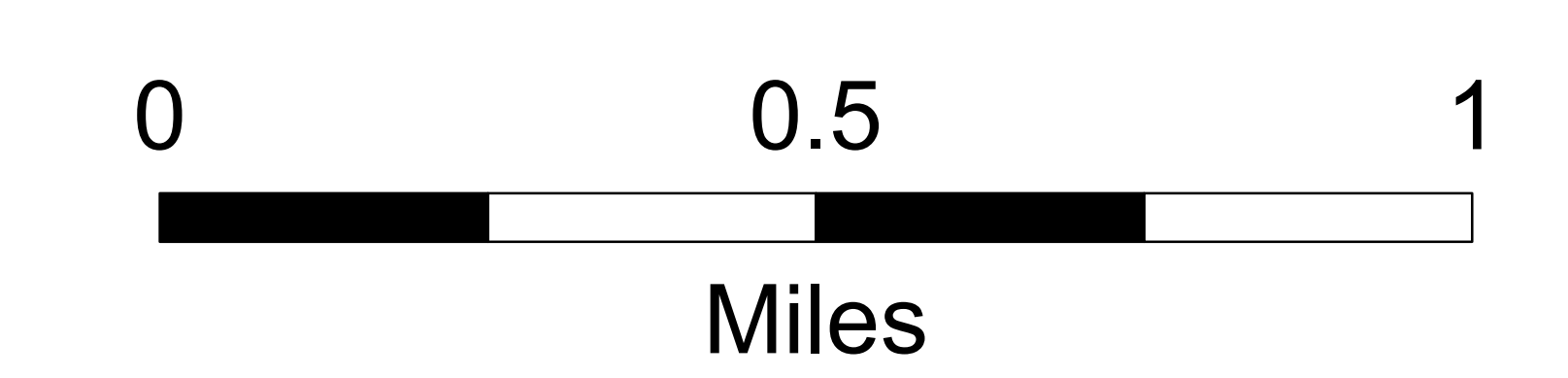
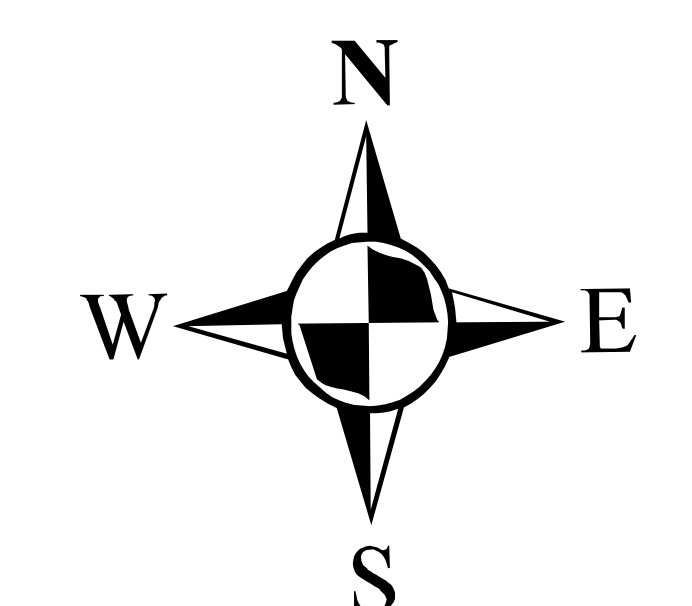


**Crow Peak Fire  
SD-BKF-160370  
July 1, 2016  
Day Operational  
Period**

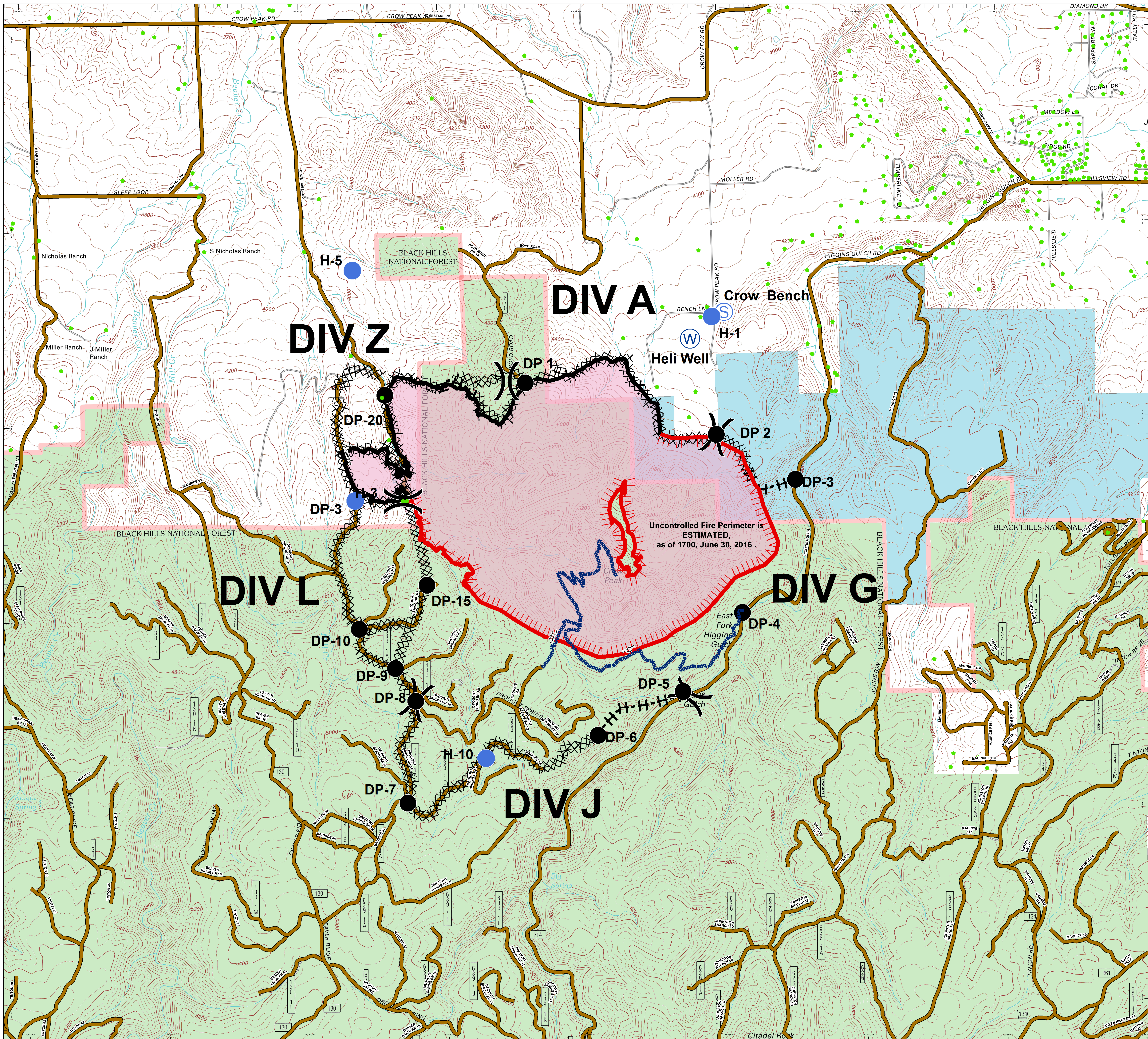
**Appox 1677 acres**

**Briefing Map**

- Drop Point
- Helispot
- Ⓢ Staging Area
- Ⓜ Water Source
- ) Division
- XXXXX Completed Dozer Line
- Completed Line
- H-H Hand Line
- ▬ Uncontrolled Fire Edge
- ▭ FirePolygon
- ▬ Crow Peak Trail
- Roads
- Structures
- BLM
- PRIVATE
- STATE
- USFS



Lat Long Grid  
UTM Z13  
NAD 83  
Degrees MinutesSeconds



Uncontrolled Fire Perimeter is  
ESTIMATED,  
as of 1700, June 30, 2016.