

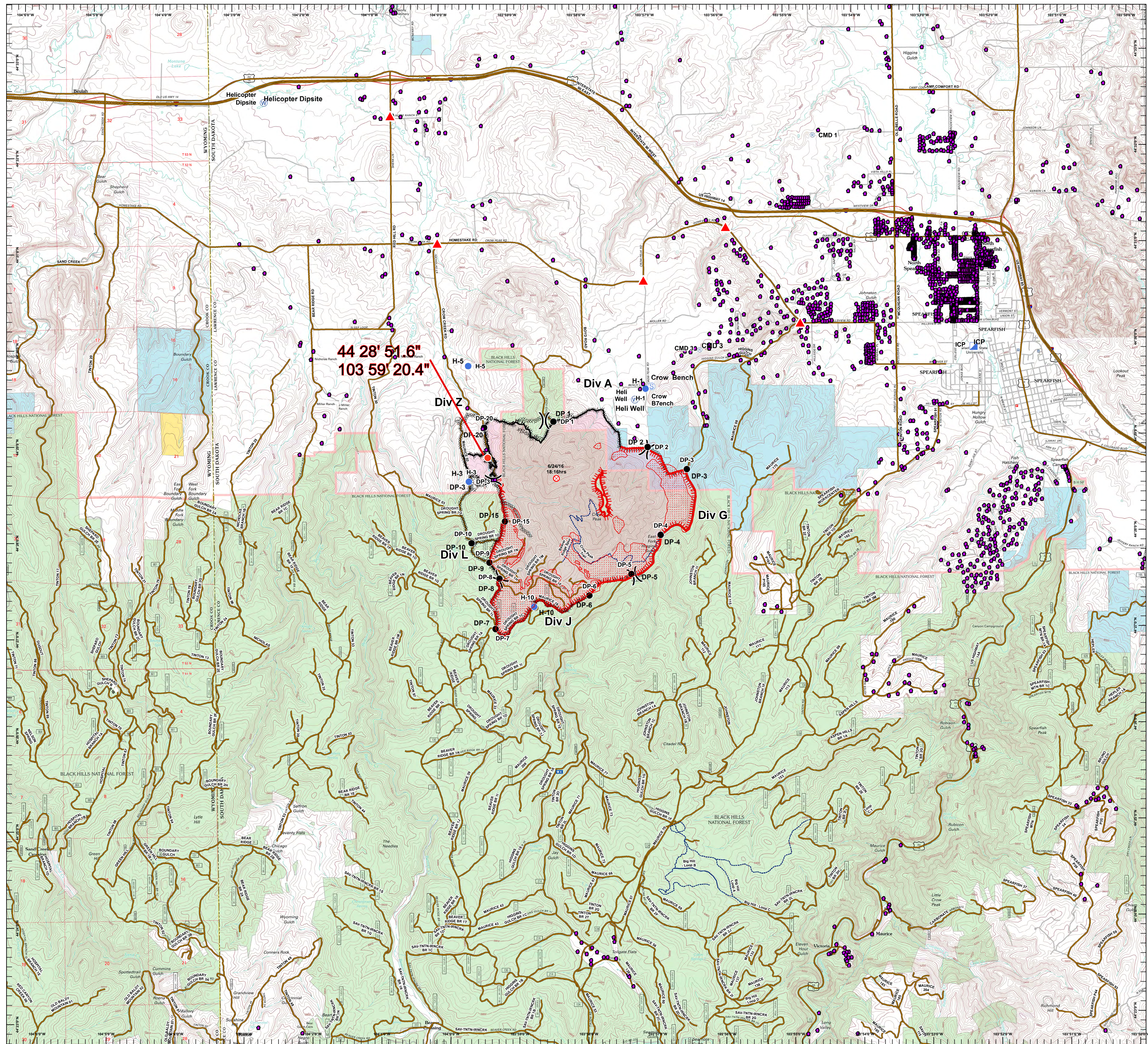
Crow Peak Fire

SD-BKF-160370

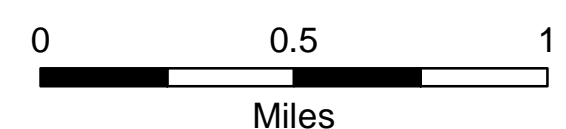
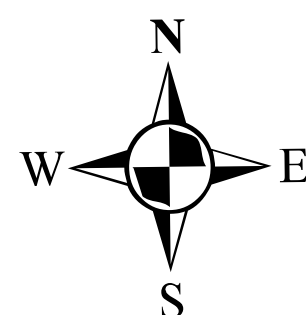
July 2, 2016

Operations Map

- Drop Point
- ⊕ Helibase
- Helispot
- ▣ ICP
- ☒ Mobile Weather Unit
- ⊗ Fire Origin
- Ⓡ Repeater
- Ⓢ Staging Area
- Ⓦ Water Source
- ▲ Controlled Access Points
-) (Division
- ⊘ Completed Dozer Line
- ⊘ Hand Line
- Completed Line
- ▬ Uncontrolled Fire Edge
- ▨ 20160702 Intense Heat
- ▩ 20160702 Scattered Heat
- 20160702 Isolated Heat
- Roads
- ⋯ Trail
- BLM
- PRIVATE
- STATE
- USFS



IR Fire Perimeter - as of 0230 hrs, July 02, 2016



G. Torres
Jul 02, 2016
0551 hrs