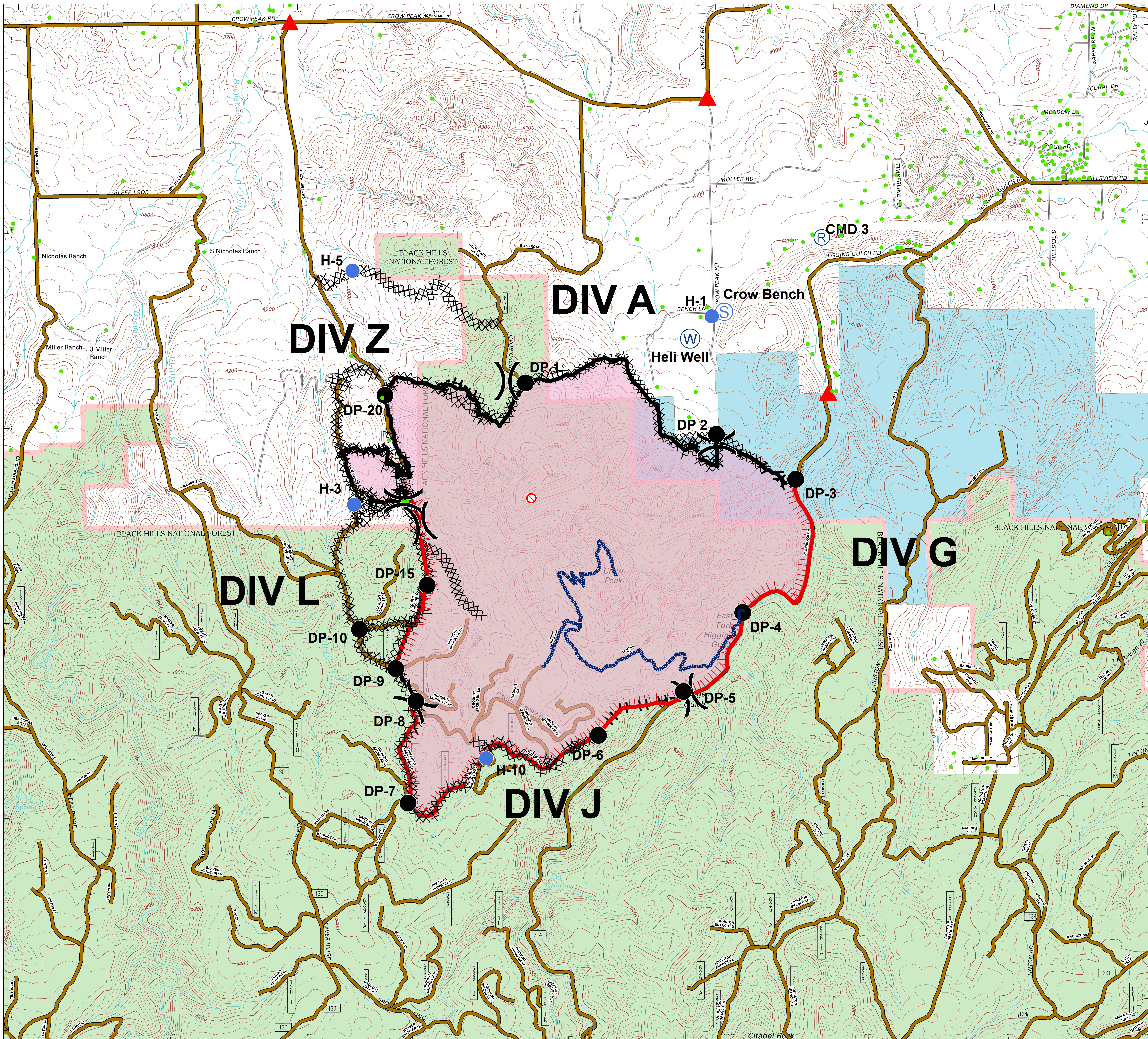


**Crow Peak Fire
SD-BKF-160370
July 3, 2016
Day Operational
Period**

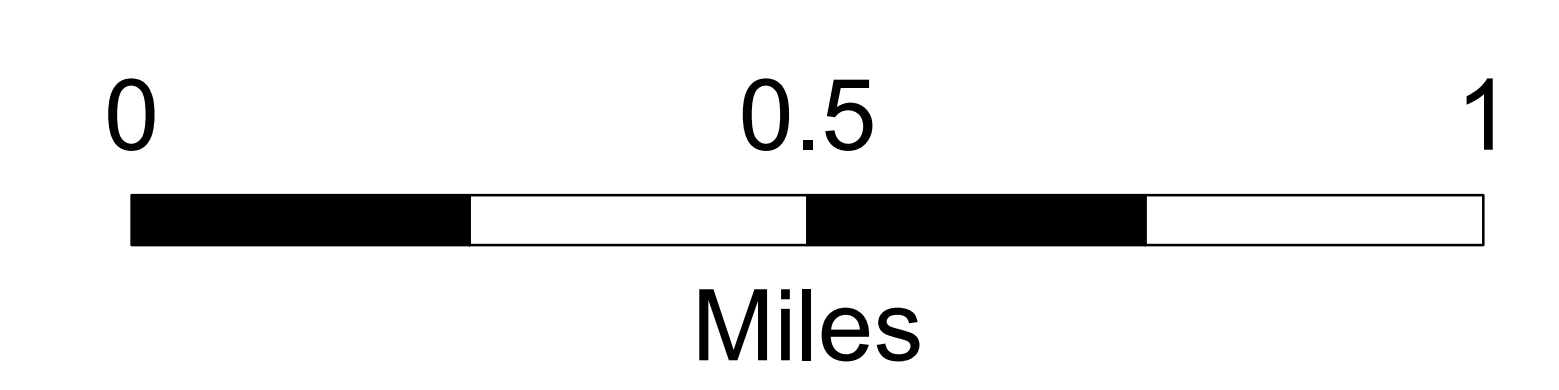
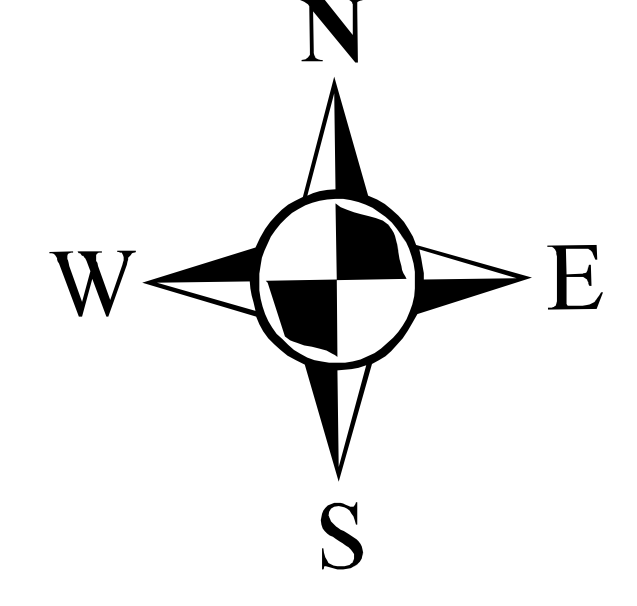
Approx 2733 acres

Briefing Map



- Structures
- ▬▬▬ Crow Peak Trail
- R Repeater
- ⊗ Fire Origin
- Drop Point
- Helispot
- S Staging Area
- W Water Source
-) Division
- Completed Dozer Line
- Completed Line
- Hand Line
- Uncontrolled Fire Edge
- FirePolygon
- ▲ Controlled Access Points
- Roads
- BLM
- PRIVATE
- STATE
- USFS

IR as of July 2 0230



Lat Long Grid
UTM Z13
NAD 83
Degrees MinutesSeconds

