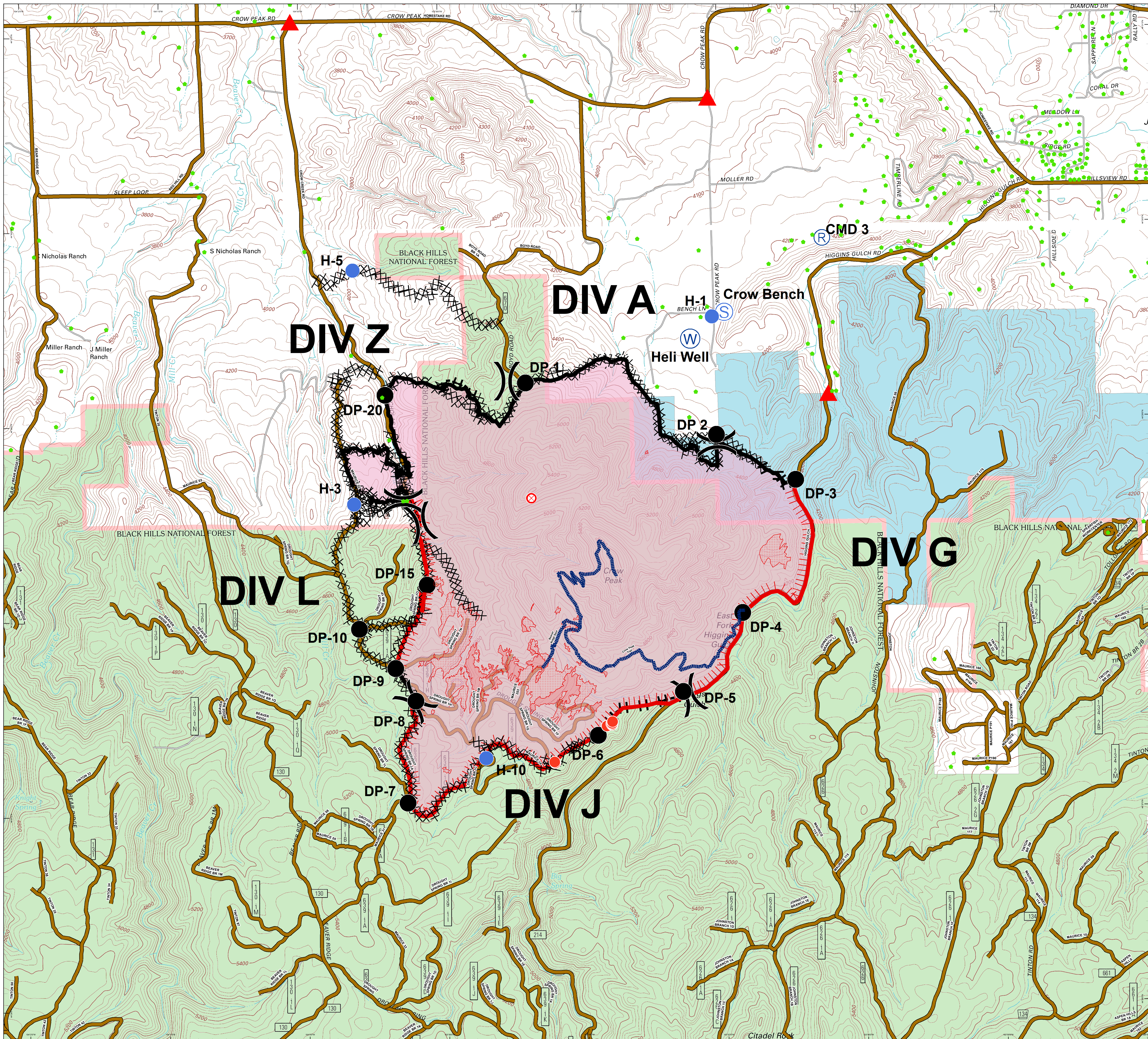


**Crow Peak Fire  
SD-BKF-160370  
July 3, 2016  
Day Operational  
Period**

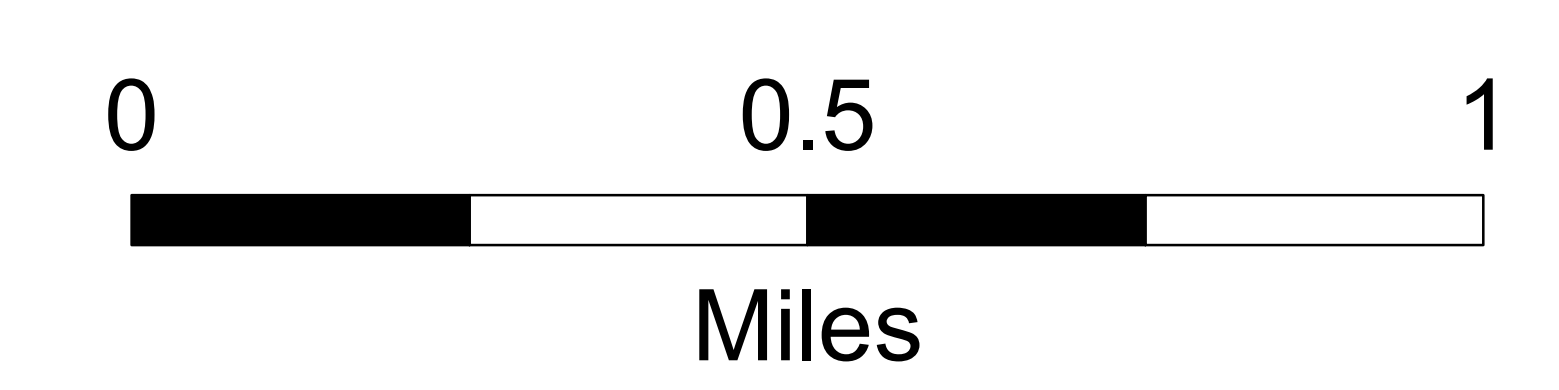
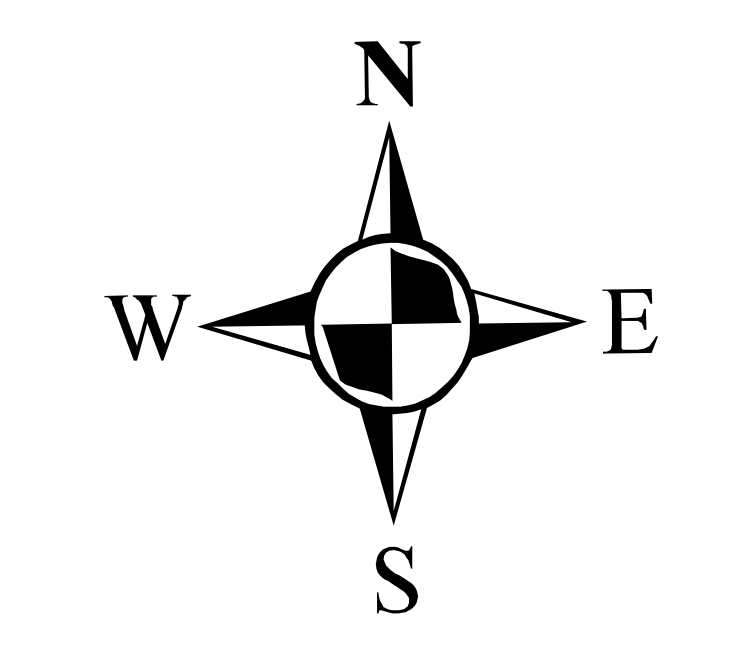
**Approx 2733 acres**

**Briefing Map**

- 20160703\_Aircraft3\_Isolated
- 20160703\_Aircraft3\_Scattered
- 20160703\_Aircraft3\_Intense
- R Repeater
- ⊗ Fire Origin
- Drop Point
- Helispot
- S Staging Area
- W Water Source
- ) Division
- ▲ Controlled Access Points
- Structures
- Crow Peak Trail
- Roads
- BLM
- PRIVATE
- STATE
- USFS



IR as of 2145, July 2, 2016



Lat Long Grid  
UTM Z13  
NAD 83  
Degrees MinutesSeconds

