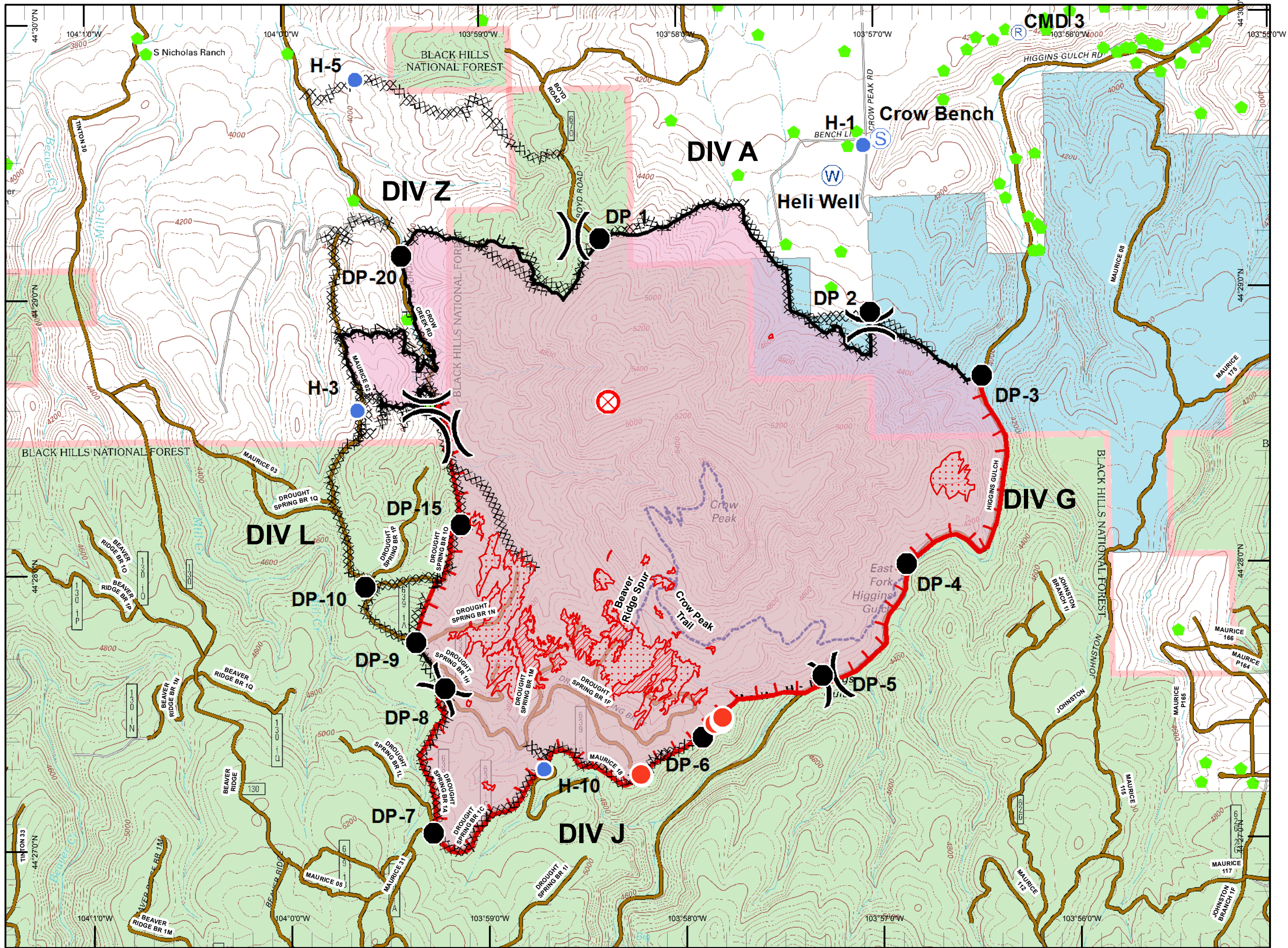


**Crow Peak Fire
SD-BKF-160370
July 3, 2016
Day Operational
Period**

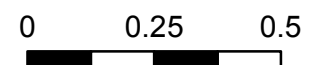
Approx 2733 acres

IAP Map



- 20160703_Aircraft3_Isolated
- 20160703_Aircraft3_Scattered
- 20160703_Aircraft3_Intense
- R Repeater
- Helispot
- Drop Point
- S Staging Area
- W Water Source
- X Fire Origin-June 24 1816hrs
-) Division
- Completed Dozer Line
- Completed Line
- H - Hand Line
- Uncontrolled Fire Edge
- Structures
- Crow Peak Trail
- Roads
- BLM
- PRIVATE
- STATE
- USFS

IR as of 2145 on July 2, 2016



Miles
Lat Long Grid
UTM Z13
NAD 83
Degrees MinutesSeconds

