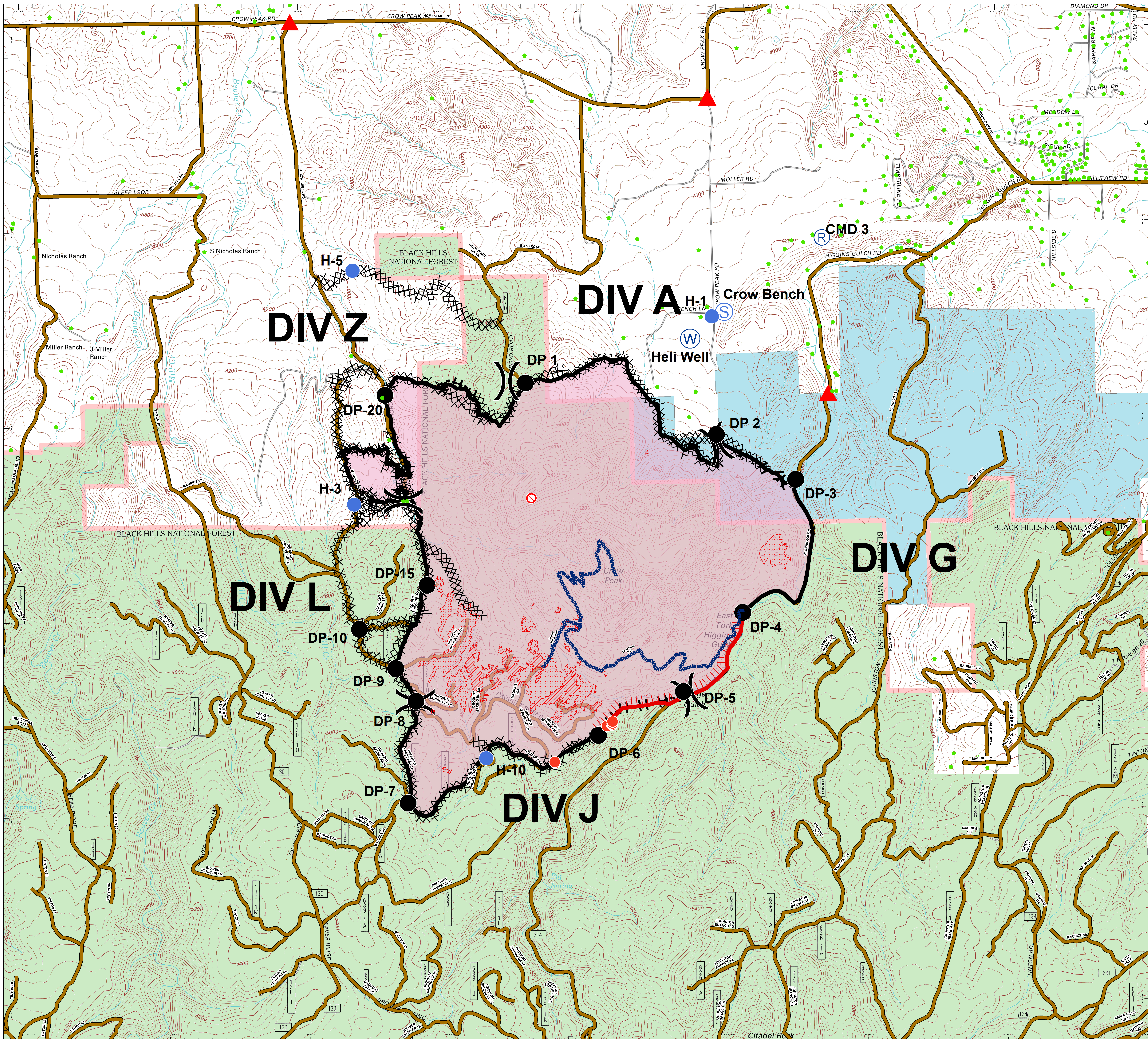


**Crow Peak Fire
SD-BKF-160370
July 4, 2016
Day Operational
Period**

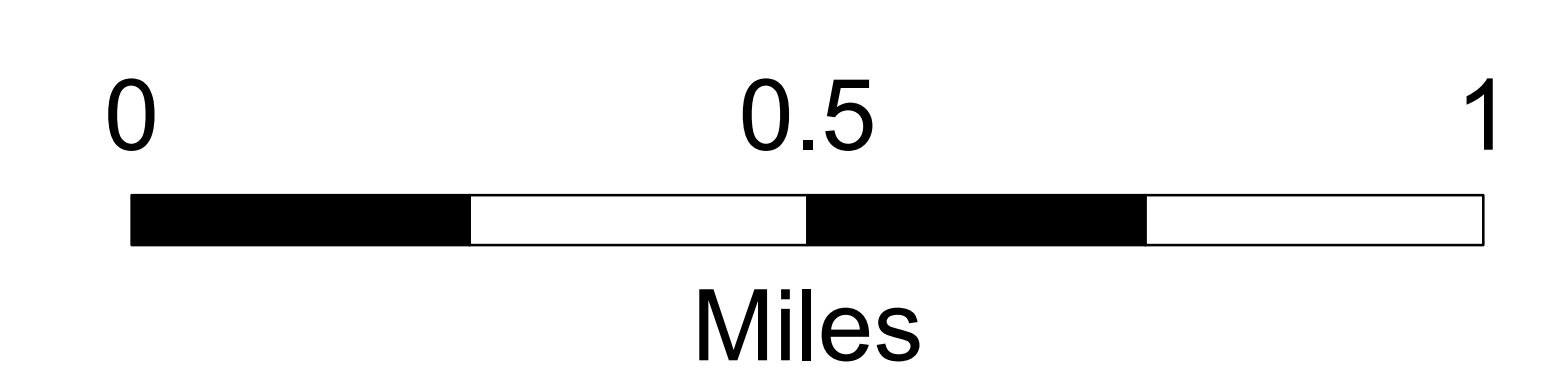
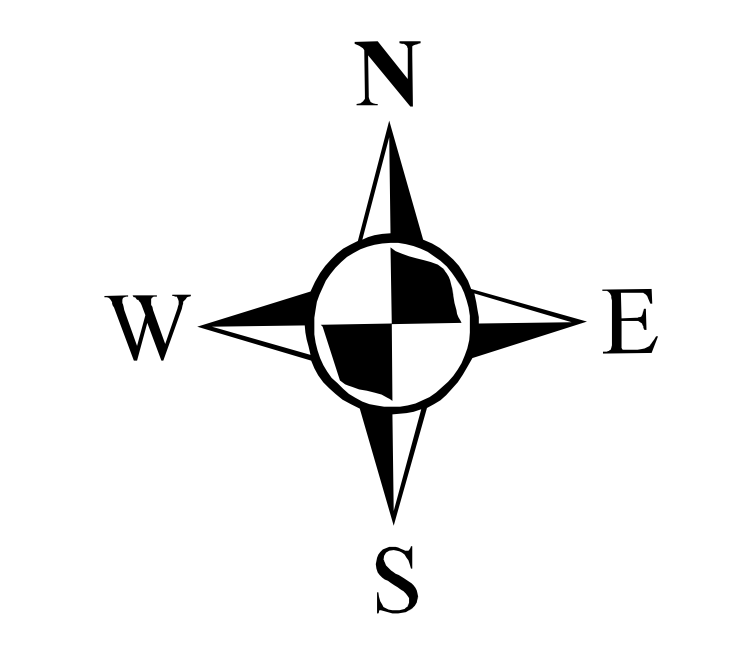
Approx 2733 acres

Briefing Map



- 20160703_Aircraft3_Isolated
- 20160703_Aircraft3_Scattered
- 20160703_Aircraft3_Intense
- R Repeater
- ⊗ Fire Origin
- Drop Point
- Helispot
- S Staging Area
- W Water Source
-) Division
- ▲ Controlled Access Points
- Structures
- Crow Peak Trail
- Roads
- BLM
- PRIVATE
- STATE
- USFS

IR as of 2145, July 2, 2016



Lat Long Grid
UTM Z13
NAD 83
Degrees MinutesSeconds

