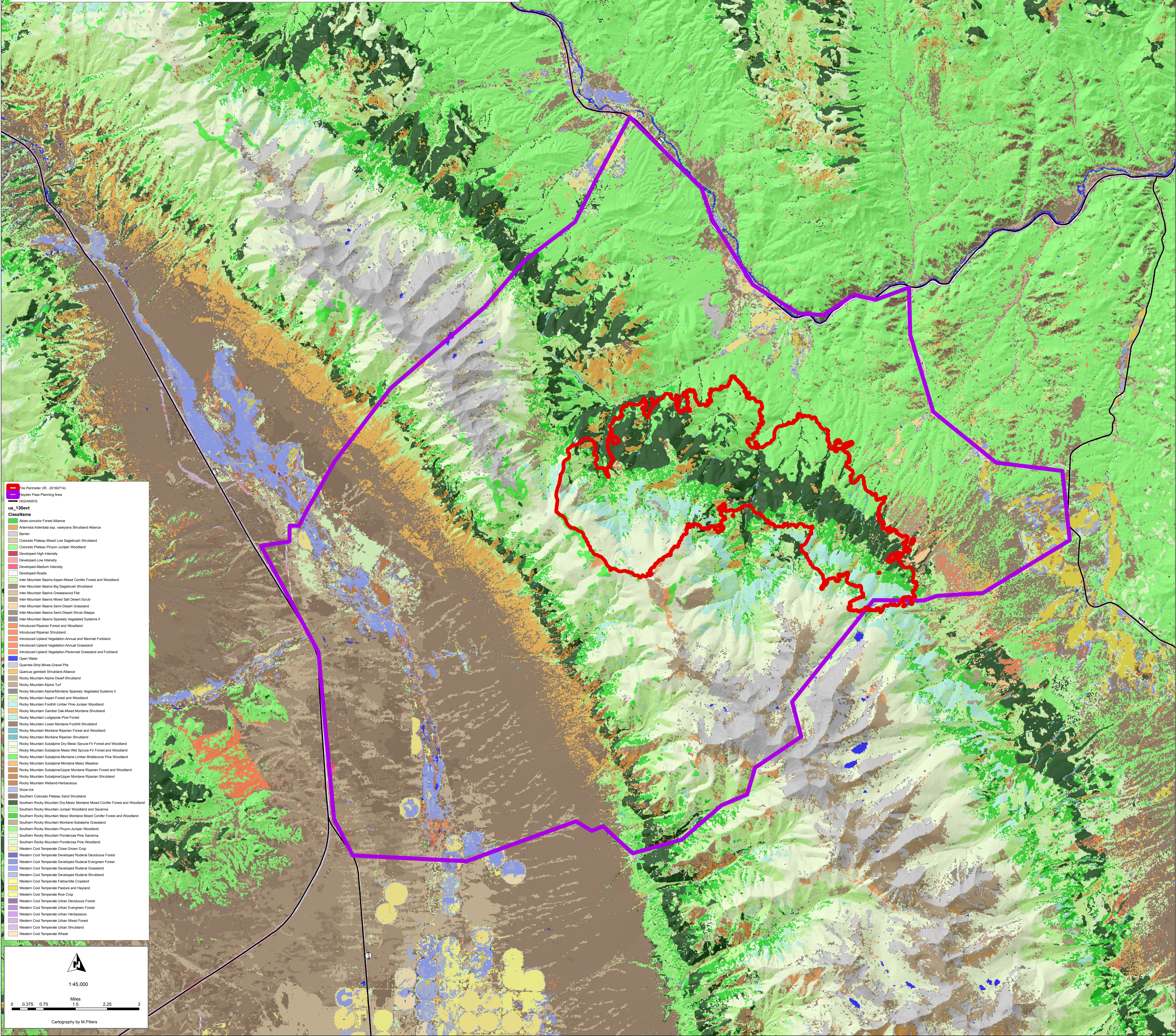


Hayden Pass Fire CO-PSF-001022 Long Term Planning - Vegetation Type July 14, 2016 14,774 Acres



- Fire Perimeter (R- 20160714)
 - Hayden Pass Planning Area
 - IFG-WAITS
- us_130evt
ClassName
- Abies concolor Forest Alliance
 - Artemisia tridentata ssp. vaseyana Shrubland Alliance
 - Barren
 - Colorado Plateau Mixed Low Sagebrush Shrubland
 - Colorado Plateau Phrygn-Juniper Woodland
 - Developed-High Intensity
 - Developed-Low Intensity
 - Developed-Medium Intensity
 - Developed Roads
 - Inter-Mountain Basins Aspen Mixed Conifer Forest and Woodland
 - Inter-Mountain Basins Big Sagebrush Shrubland
 - Inter-Mountain Basins Chokecherry Flat
 - Inter-Mountain Basins Mixed Salt Desert Scrub
 - Inter-Mountain Basins Semi-Desert Grassland
 - Inter-Mountain Basins Semi-Desert Shrub-Steppe
 - Inter-Mountain Basins Sparsely Vegetated Systems II
 - Introduced Riparian Forest and Woodland
 - Introduced Riparian Shrubland
 - Introduced Upland Vegetation-Annual and Biennial Forbland
 - Introduced Upland Vegetation-Annual Grassland
 - Introduced Upland Vegetation-Perennial Grassland and Forbland
 - Open Water
 - Quarries/Strip Mines Gravel Pits
 - Quercus gambelii Shrubland Alliance
 - Rocky Mountain Alpine Dwarf Shrubland
 - Rocky Mountain Alpine Tuff
 - Rocky Mountain Alpine/Montane Sparsely Vegetated Systems II
 - Rocky Mountain Aspen Forest and Woodland
 - Rocky Mountain Foothill Limber Pine-Juniper Woodland
 - Rocky Mountain Gambel Oak-Mixed Montane Shrubland
 - Rocky Mountain Lodgepole Pine Forest
 - Rocky Mountain Lower Montane-Foothill Shrubland
 - Rocky Mountain Montane Riparian Forest and Woodland
 - Rocky Mountain Montane Riparian Shrubland
 - Rocky Mountain Subalpine Dry-Mesic Spruce-Fir Forest and Woodland
 - Rocky Mountain Subalpine Mesic-Wet Spruce-Fir Forest and Woodland
 - Rocky Mountain Subalpine-Montane Limber-Bristlecone Pine Woodland
 - Rocky Mountain Subalpine-Montane Mesic Meadow
 - Rocky Mountain Subalpine/Upper Montane Riparian Forest and Woodland
 - Rocky Mountain Subalpine/Upper Montane Riparian Shrubland
 - Rocky Mountain Wetland-Herbaceous
 - Snow-Ice
 - Southern Colorado Plateau Sand Shrubland
 - Southern Rocky Mountain Dry-Mesic Montane Mixed Conifer Forest and Woodland
 - Southern Rocky Mountain Juniper Woodland and Savanna
 - Southern Rocky Mountain Mesic Montane Mixed Conifer Forest and Woodland
 - Southern Rocky Mountain Mesic Montane Sagebrush Grassland
 - Southern Rocky Mountain Phrygn-Juniper Woodland
 - Southern Rocky Mountain Ponderosa Pine Savanna
 - Southern Rocky Mountain Ponderosa Pine Woodland
 - Western Cool Temperate Close Grown Crop
 - Western Cool Temperate Developed Ruderal Deciduous Forest
 - Western Cool Temperate Developed Ruderal Evergreen Forest
 - Western Cool Temperate Developed Ruderal Grassland
 - Western Cool Temperate Developed Ruderal Shrubland
 - Western Cool Temperate Fallow/Idle Cropland
 - Western Cool Temperate Pasture and Hayland
 - Western Cool Temperate Row Crop
 - Western Cool Temperate Urban Deciduous Forest
 - Western Cool Temperate Urban Evergreen Forest
 - Western Cool Temperate Urban Herbaceous
 - Western Cool Temperate Urban Mixed Forest
 - Western Cool Temperate Urban Shrubland
 - Western Cool Temperate Wheat

