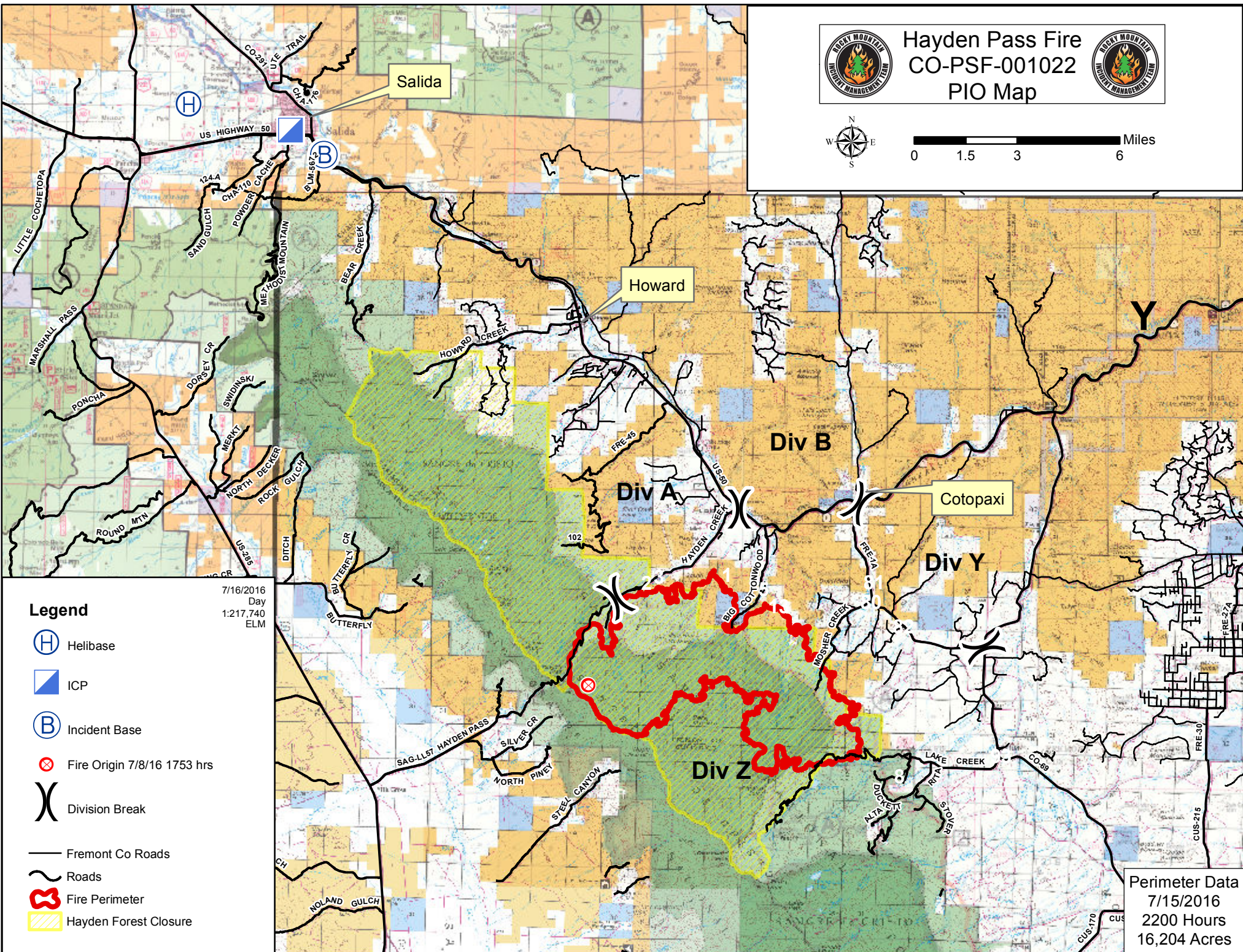




# Hayden Pass Fire CO-PSF-001022 PIO Map



0 1.5 3 6 Miles



### Legend

- Helibase
- ICP
- Incident Base
- Fire Origin 7/8/16 1753 hrs
- Division Break
- Fremont Co Roads
- Roads
- Fire Perimeter
- Hayden Forest Closure

7/16/2016  
Day  
1:217,740  
ELM

Perimeter Data  
7/15/2016  
2200 Hours  
16,204 Acres