

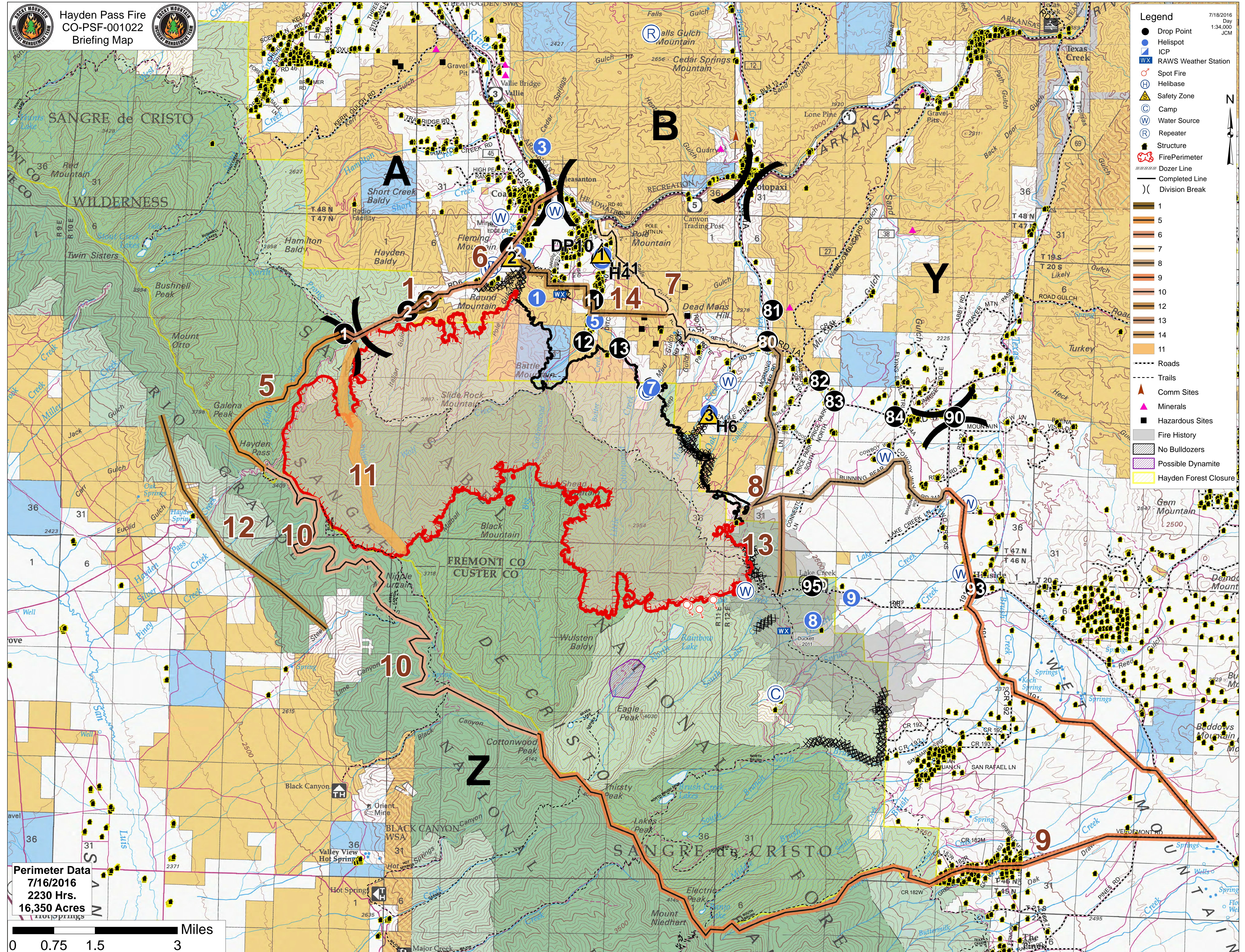


Hayden Pass Fire
CO-PSF-001022
Briefing Map



7/18/2016
Day
1:34,000
JCM

- Legend**
- Drop Point
 - Helispot
 - ICP
 - RAWFS Weather Station
 - Spot Fire
 - Helibase
 - △ Safety Zone
 - Camp
 - Water Source
 - Repeater
 - Structure
 - Fire Perimeter
 - Dozer Line
 - Completed Line
 - Division Break
- 1
5
6
7
8
9
10
12
13
14
11
- Roads
--- Trails
- ▲ Comm Sites
 - ▲ Minerals
 - Hazardous Sites
 - Fire History
 - No Bulldozers
 - Possible Dynamite
 - Hayden Forest Closure



Perimeter Data
7/16/2016
2230 Hrs.
16,350 Acres

