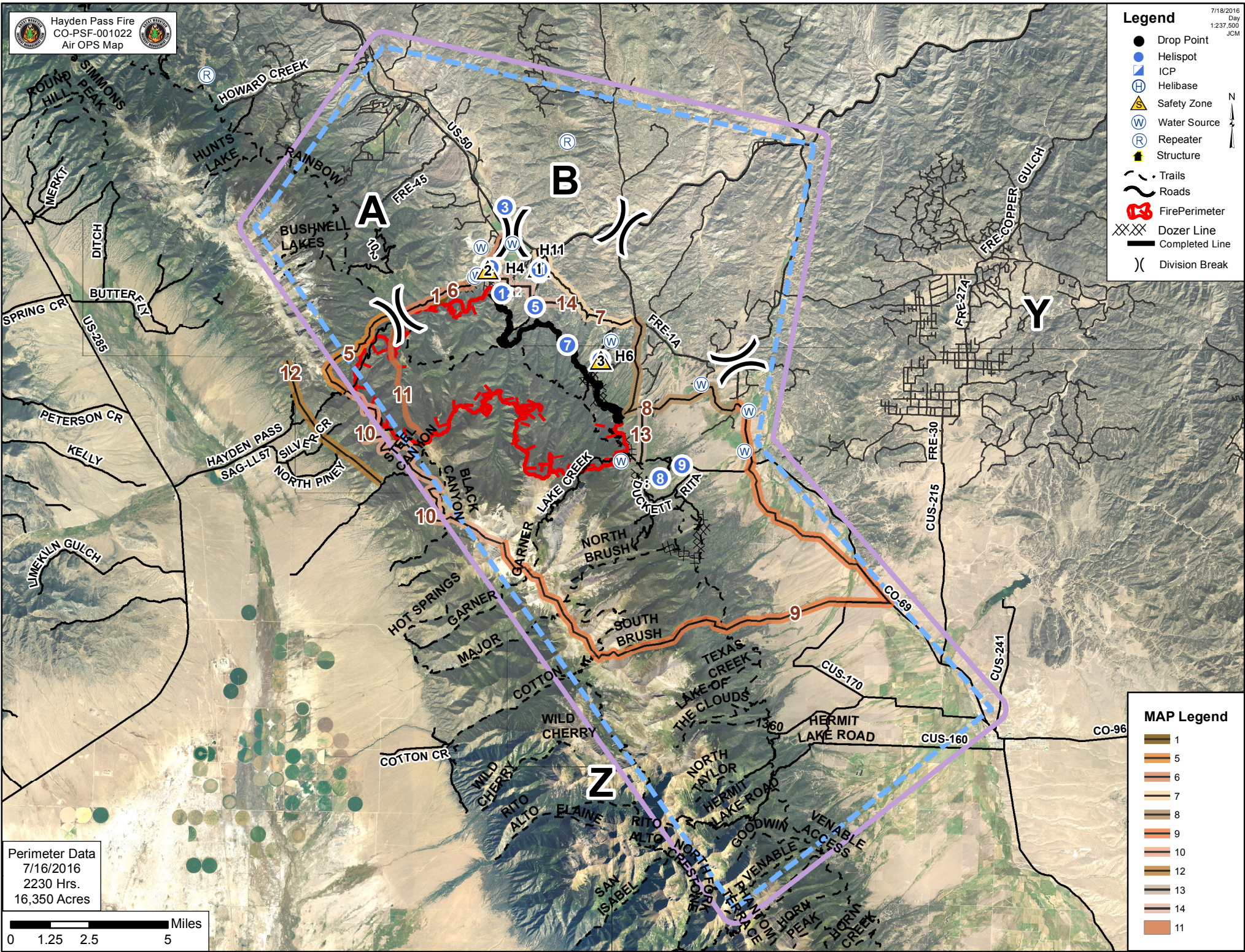
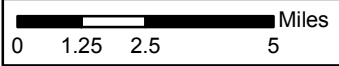


Legend

- Drop Point
- Helispot
- ICP
- Helibase
- ▲ Safety Zone
- Water Source
- Repeater
- Structure
- Trails
- Roads
- 🔥 FirePerimeter
- XXXX Dozer Line
- Completed Line
-) Division Break



Perimeter Data
 7/16/2016
 2230 Hrs.
 16,350 Acres



MAP Legend

- 1
- 5
- 6
- 7
- 8
- 9
- 10
- 12
- 13
- 14
- 11

TYPE	Latitude	Longitude	LABEL
Incident Base	38° 30.933'	-105° 58.658'	
Alta Spike Camp	38° 14.133'	-105° 40.667'	
Mud Camp	38° 18.896'	-105° 43.303'	
Helibase	38° 32.175'	-106° 3.042'	
ICP	38° 31.54'	-105° 59.757'	
Helispot	38° 20.378'	-105° 45.53'	H1
Helispot	38° 21.09'	-105° 45.93'	H2
Helispot	38° 22.77'	-105° 45.45'	H3
Helispot	38° 20.98'	-105° 44.23'	H4
Helispot	38° 20.02'	-105° 44.36'	H5
Helispot	38° 18.57'	-105° 42.05'	H6
Helispot	38° 18.97'	-105° 43.21'	H7
Helispot	38° 15.3'	-105° 39.93'	H8
Helispot	38° 15.66'	-105° 39.16'	H9
Helispot	38° 21.056'	-105° 44.213'	H11
Water Source	38° 21.76'	-105° 45.18'	
Water Source	38° 17.9'	-105° 38.5'	
Water Source	38° 17.17'	-105° 36.82'	
Water Source	38° 19.08'	-105° 41.67'	Mosher Dip
Water Source	38° 20.89'	-105° 46.41'	A/B Dip
Water Source	38° 15.76'	-105° 41.29'	Balman Dip
Water Source	38° 20.82'	-105° 46.49'	A/B Dip
Water Source	38° 16.06'	-105° 36.96'	
Water Source	38° 21.65'	-105° 46.274'	
Repeater	38° 24.58'	-105° 43.27'	C2
Repeater	38° 26.335'	-105° 55.977'	C8
Safety Zone	38° 21.08'	-105° 44.24'	SZ1
Safety Zone	38° 21.015'	-105° 46.038'	SZ2
Safety Zone	38° 18.544'	-105° 42.044'	SZ3
IRAWS	38° 15.128'	-105° 40.52'	IRAWS18
IRAWS	38° 20.435'	-105° 45.075'	IRAWS22

