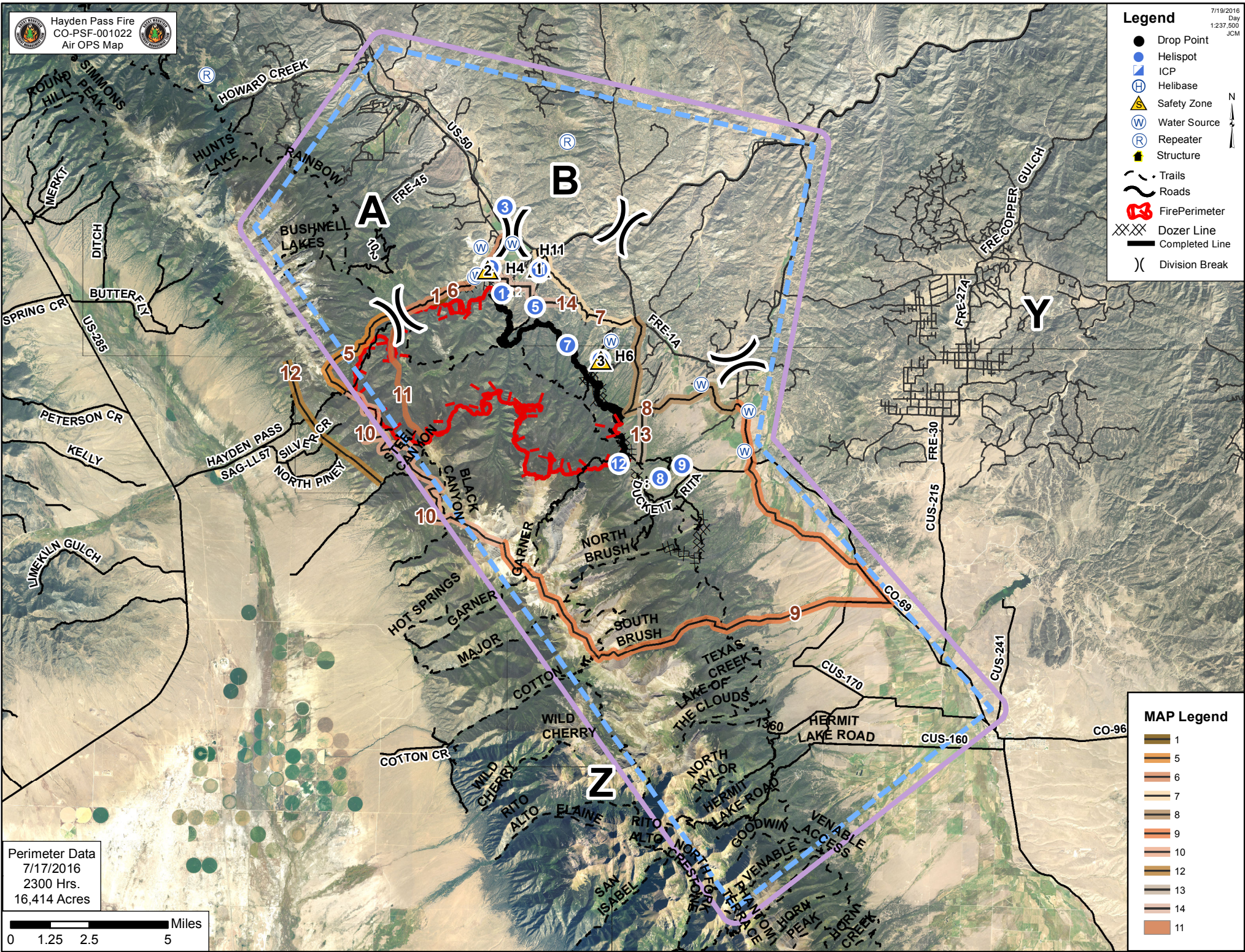


Legend

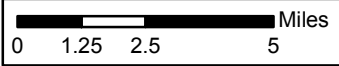
- Drop Point
- Helispot
- ICP
- ⊕ Helibase
- ▲ Safety Zone
- ⊙ Water Source
- Ⓡ Repeater
- 🏠 Structure
- ⋯ Trails
- Roads
- 🔥 FirePerimeter
- XXXX Dozer Line
- Completed Line
- ⎓ Division Break



MAP Legend

- 1
- 5
- 6
- 7
- 8
- 9
- 10
- 12
- 13
- 14
- 11

Perimeter Data
 7/17/2016
 2300 Hrs.
 16,414 Acres



| TYPE | Latitude | Longitude | LABEL | LZ Rating |
|-----------------|-------------|---------------|------------|---------------|
| Incident Base | 38° 30.933' | -105° 58.658' | | |
| Alta Spike Camp | 38° 14.133' | -105° 40.667' | | |
| Mud Camp | 38° 18.896' | -105° 43.303' | | |
| Helibase | 38° 32.175' | -106° 3.042' | | |
| ICP | 38° 31.54' | -105° 59.757' | | |
| Helispot | 38° 20.378' | -105° 45.53' | H1 | |
| Helispot | 38° 21.09' | -105° 45.93' | H2 | |
| Helispot | 38° 22.77' | -105° 45.45' | H3 | |
| Helispot | 38° 20.98' | -105° 44.23' | H4 | |
| Helispot | 38° 20.02' | -105° 44.36' | H5 | |
| Helispot | 38° 18.57' | -105° 42.05' | H6 | |
| Helispot | 38° 18.97' | -105° 43.21' | H7 | |
| Helispot | 38° 15.3' | -105° 39.93' | H8 | |
| Helispot | 38° 15.66' | -105° 39.16' | H9 | |
| Helispot | 38° 21.056' | -105° 44.213' | H11 | |
| Helispot | 38° 15.69' | -105° 41.38' | H12 | Type III only |
| Water Source | 38° 21.76' | -105° 45.18' | | |
| Water Source | 38° 17.9' | -105° 38.5' | | |
| Water Source | 38° 17.17' | -105° 36.82' | | |
| Water Source | 38° 19.08' | -105° 41.67' | Mosher Dip | |
| Water Source | 38° 20.89' | -105° 46.41' | A/B Dip | |
| Water Source | 38° 15.76' | -105° 41.29' | Balman Dip | |
| Water Source | 38° 20.82' | -105° 46.49' | A/B Dip | |
| Water Source | 38° 16.06' | -105° 36.96' | | |
| Water Source | 38° 21.65' | -105° 46.274' | | |
| Repeater | 38° 24.58' | -105° 43.27' | C2 | |
| Repeater | 38° 26.335' | -105° 55.977' | C8 | |
| Safety Zone | 38° 21.08' | -105° 44.24' | SZ1 | |
| Safety Zone | 38° 21.015' | -105° 46.038' | SZ2 | |
| Safety Zone | 38° 18.544' | -105° 42.044' | SZ3 | |
| IRAWS | 38° 15.128' | -105° 40.52' | IRAWS18 | |
| IRAWS | 38° 20.435' | -105° 45.075' | IRAWS22 | |

