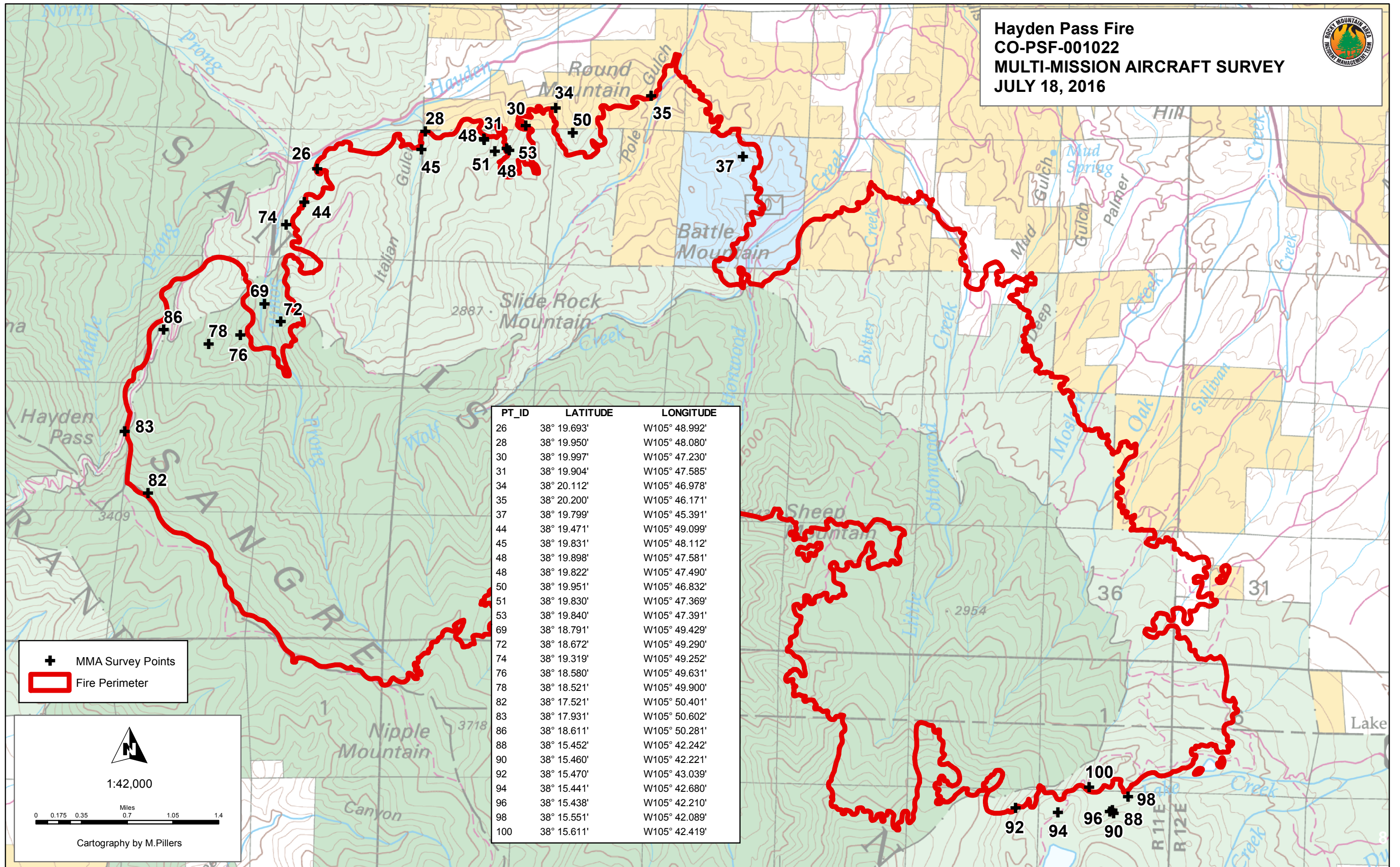




**Hayden Pass Fire**  
**CO-PSF-001022**  
**MULTI-MISSION AIRCRAFT SURVEY**  
**JULY 18, 2016**



PT_ID	LATITUDE	LONGITUDE
26	38° 19.693'	W105° 48.992'
28	38° 19.950'	W105° 48.080'
30	38° 19.997'	W105° 47.230'
31	38° 19.904'	W105° 47.585'
34	38° 20.112'	W105° 46.978'
35	38° 20.200'	W105° 46.171'
37	38° 19.799'	W105° 45.391'
44	38° 19.471'	W105° 49.099'
45	38° 19.831'	W105° 48.112'
48	38° 19.898'	W105° 47.581'
48	38° 19.822'	W105° 47.490'
50	38° 19.951'	W105° 46.832'
51	38° 19.830'	W105° 47.369'
53	38° 19.840'	W105° 47.391'
69	38° 18.791'	W105° 49.429'
72	38° 18.672'	W105° 49.290'
74	38° 19.319'	W105° 49.252'
76	38° 18.580'	W105° 49.631'
78	38° 18.521'	W105° 49.900'
82	38° 17.521'	W105° 50.401'
83	38° 17.931'	W105° 50.602'
86	38° 18.611'	W105° 50.281'
88	38° 15.452'	W105° 42.242'
90	38° 15.460'	W105° 42.221'
92	38° 15.470'	W105° 43.039'
94	38° 15.441'	W105° 42.680'
96	38° 15.438'	W105° 42.210'
98	38° 15.551'	W105° 42.089'
100	38° 15.611'	W105° 42.419'

MMA Survey Points  
 Fire Perimeter

1:42,000  
  
 Cartography by M.Pillers