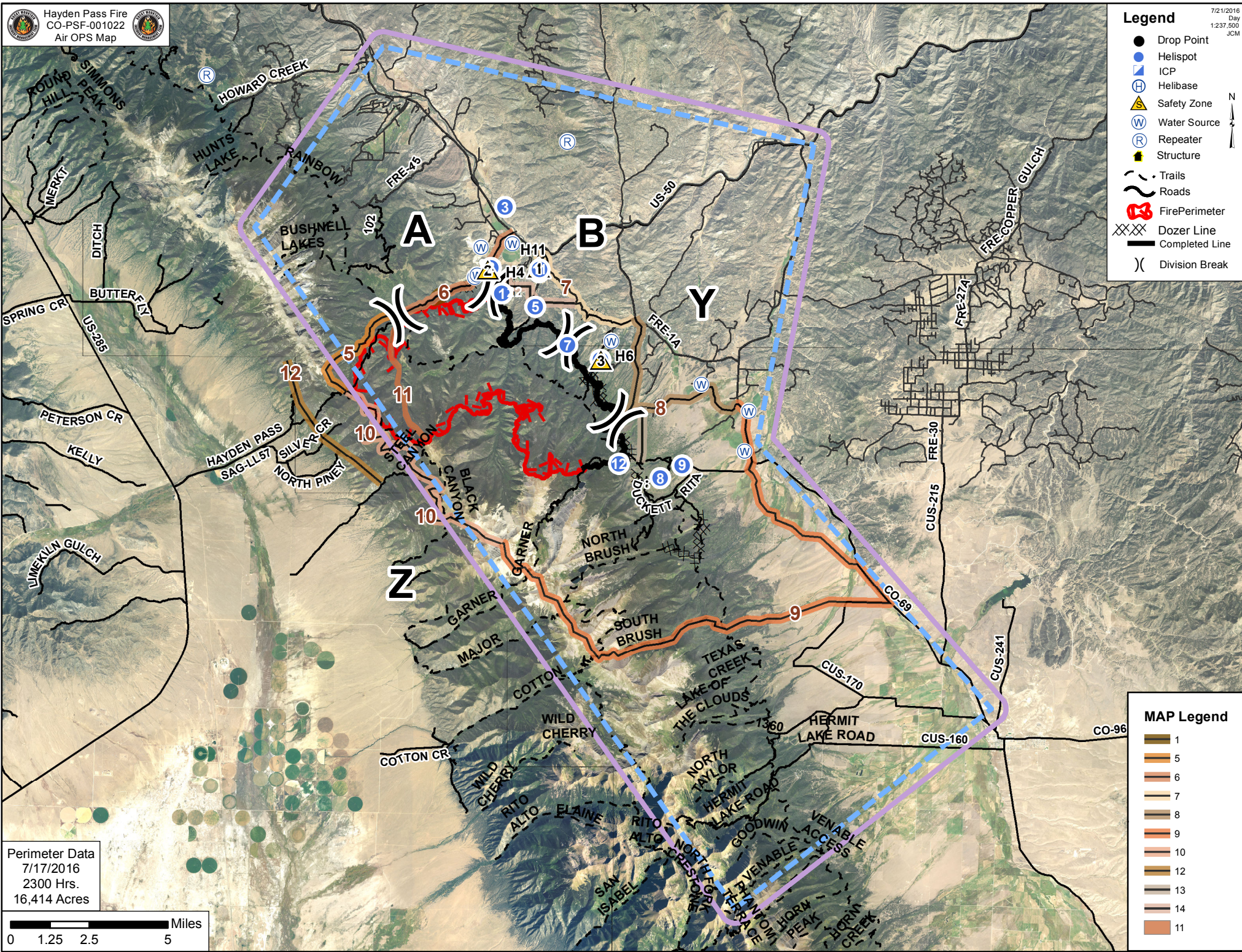
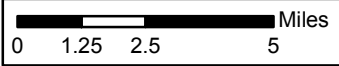


Legend

- Drop Point
- Helispot
- ICP
- Helibase
- Safety Zone
- Water Source
- Repeater
- Structure
- Trails
- Roads
- Fire Perimeter
- Dozer Line
- Completed Line
- Division Break



Perimeter Data
 7/17/2016
 2300 Hrs.
 16,414 Acres



MAP Legend

- 1
- 5
- 6
- 7
- 8
- 9
- 10
- 12
- 13
- 14
- 11

TYPE	Latitude	Longitude	LABEL	LZ Rating
Incident Base	38° 30.933'	-105° 58.658'		
Alta Spike Camp	38° 14.133'	-105° 40.667'		
Mud Camp	38° 18.896'	-105° 43.303'		
Helibase	38° 32.175'	-106° 3.042'		
ICP	38° 31.54'	-105° 59.757'		
Helispot	38° 20.378'	-105° 45.53'	H1	
Helispot	38° 21.09'	-105° 45.93'	H2	
Helispot	38° 22.77'	-105° 45.45'	H3	
Helispot	38° 20.98'	-105° 44.23'	H4	
Helispot	38° 20.02'	-105° 44.36'	H5	
Helispot	38° 18.57'	-105° 42.05'	H6	
Helispot	38° 18.97'	-105° 43.21'	H7	
Helispot	38° 15.3'	-105° 39.93'	H8	
Helispot	38° 15.66'	-105° 39.16'	H9	
Helispot	38° 21.056'	-105° 44.213'	H11	
Helispot	38° 15.69'	-105° 41.38'	H12	Type III only
Water Source	38° 21.76'	-105° 45.18'		
Water Source	38° 17.9'	-105° 38.5'		
Water Source	38° 17.17'	-105° 36.82'		
Water Source	38° 19.08'	-105° 41.67'	Mosher Dip	
Water Source	38° 20.89'	-105° 46.41'	A/B Dip	
Water Source	38° 15.76'	-105° 41.29'	Balman Dip	
Water Source	38° 20.82'	-105° 46.49'	A/B Dip	
Water Source	38° 16.06'	-105° 36.96'		
Water Source	38° 21.65'	-105° 46.274'		
Repeater	38° 24.58'	-105° 43.27'	C2	
Repeater	38° 26.335'	-105° 55.977'	C8	
Safety Zone	38° 21.08'	-105° 44.24'	SZ1	
Safety Zone	38° 21.015'	-105° 46.038'	SZ2	
Safety Zone	38° 18.544'	-105° 42.044'	SZ3	
IRAWS	38° 15.128'	-105° 40.52'	IRAWS18	
IRAWS	38° 20.435'	-105° 45.075'	IRAWS22	

